

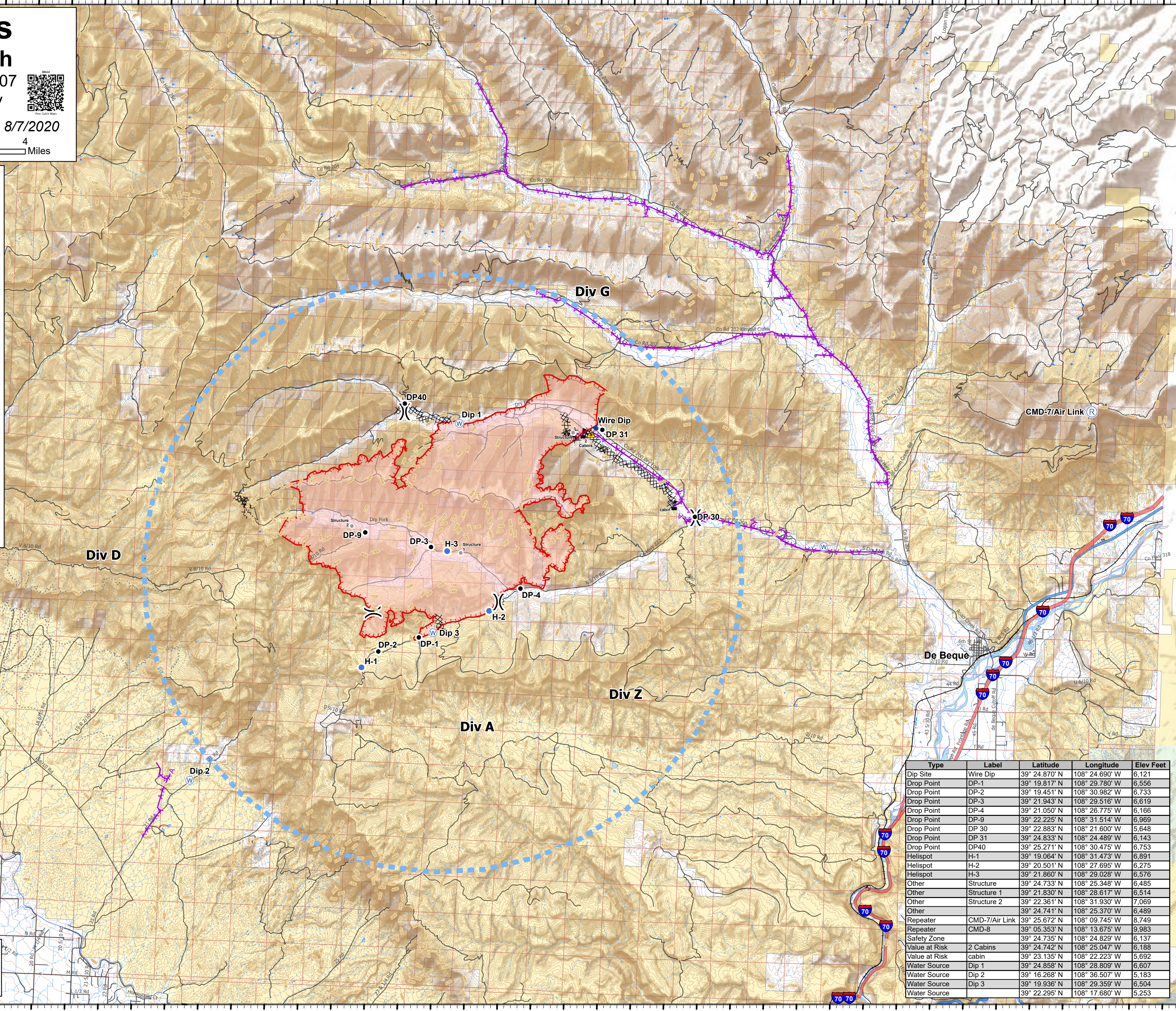
Air Ops Pine Gulch

CO-GRD-000307
8/8/2020 Day

Appx 20,089 ac at 1930 8/7/2020



- Temporary Flight Restriction (0_9074)
- Dip Site
- Drop Point
- Helispot
- Repeater
- Safety Zone
- Water Source
- Value at Risk
- Other
- Division Break
- Completed Dozer Line
- Uncontrolled Fire Edge
- Road as Completed Line
- Planned Fire Line
- Wildfire Daily Fire Perimeter
- Transmission Lines
- Interstate
- Highway or ramp
- Local or 4WD road
- Tunnel
- Trail
- Bureau of Land Management
- Bureau of Reclamation
- Private
- State, County, City; Areas
- US Forest Service



Type	Label	Latitude	Longitude	Elev Feet
Dip Site	Wire Dip	39° 24.870' N	108° 24.690' W	6,121
Drop Point	DP-1	39° 19.817' N	108° 29.780' W	6,556
Drop Point	DP-2	39° 19.451' N	108° 30.982' W	6,733
Drop Point	DP-3	39° 21.943' N	108° 29.516' W	6,619
Drop Point	DP-4	39° 21.050' N	108° 26.775' W	6,166
Drop Point	DP-9	39° 22.225' N	108° 31.514' W	6,969
Drop Point	DP 30	39° 22.883' N	108° 21.600' W	5,648
Drop Point	DP 31	39° 24.833' N	108° 24.489' W	6,143
Drop Point	DP40	39° 25.271' N	108° 30.475' W	6,753
Helispot	H-1	39° 19.064' N	108° 31.473' W	6,891
Helispot	H-2	39° 20.501' N	108° 27.695' W	6,275
Helispot	H-3	39° 21.860' N	108° 29.028' W	6,576
Other	Structure	39° 24.733' N	108° 25.348' W	6,485
Other	Structure 1	39° 21.830' N	108° 28.617' W	6,514
Other	Structure 2	39° 22.361' N	108° 31.930' W	7,069
Other		39° 24.741' N	108° 25.370' W	6,489
Repeater	CMD-7/Air Link	39° 25.672' N	108° 09.745' W	8,749
Repeater	CMD-8	39° 05.353' N	108° 13.675' W	9,983
Safety Zone		39° 24.735' N	108° 24.829' W	6,137
Value at Risk	2 Cabins	39° 24.742' N	108° 25.047' W	6,188
Value at Risk	cabin	39° 23.135' N	108° 22.223' W	5,692
Water Source	Dip 1	39° 24.858' N	108° 28.809' W	6,607
Water Source	Dip 2	39° 16.268' N	108° 36.507' W	5,183
Water Source	Dip 3	39° 19.936' N	108° 29.359' W	6,504
Water Source		39° 22.295' N	108° 17.680' W	5,253

S.McCormick
8/7/2020 2340
Acres from IR and GPS
North American 1983 Datum.
LatLong Grid

