



108°29'W 108°28.5'W 108°28'W 108°27.5'W 108°27'W 108°26.5'W 108°26'W 108°25.5'W 108°25'W 108°24.5'W 108°24'W 108°23.5'W 108°23'W 108°22.5'W 108°22'W 108°21.5'W 108°21'W 108°20.5'W 108°20'W 108°19.5'W 108°19'W 108°18.5'W 108°18'W 108°17.5'W 108°17'W 108°16.5'W 108°16'W 108°15.5'W 108°15'W 108°14.5'W

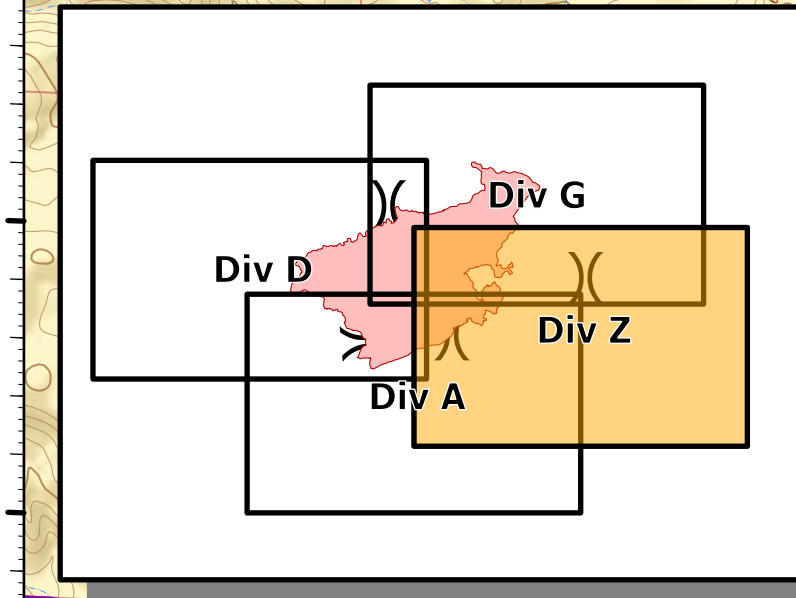
**Div Z**  
**Pine Gulch**  
 COGRD-000307  
 08/09/2020 Day

Appx 21,364 acres at 1200 on 08/08/2020

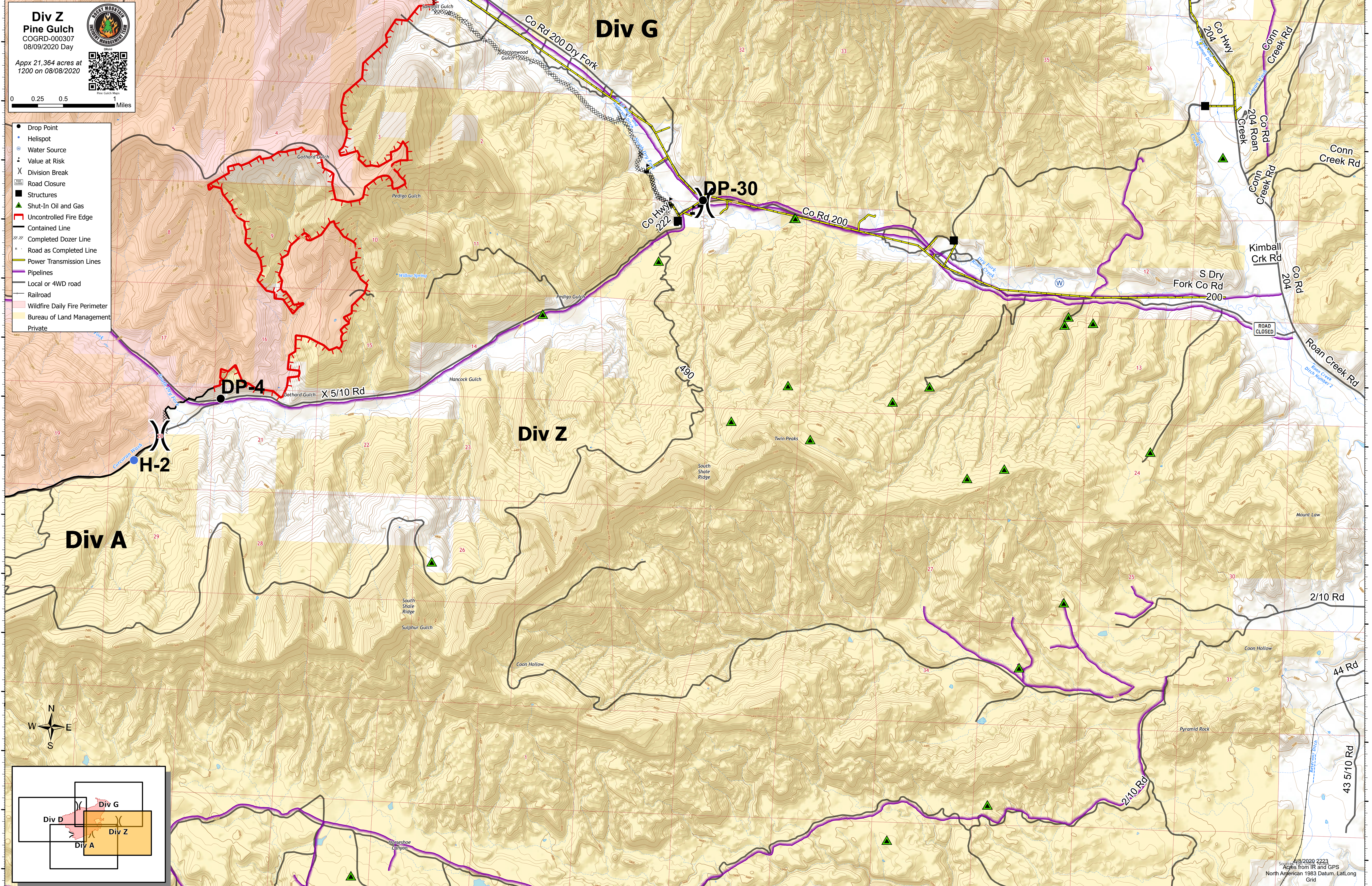



0 0.25 0.5 1 Miles

- Drop Point
- Helispot
- Water Source
- Value at Risk
- ⌘ Division Break
- Road Closure
- Structures
- ▲ Shut-In Oil and Gas
- Uncontrolled Fire Edge
- Contained Line
- Completed Dozer Line
- Road as Completed Line
- Power Transmission Lines
- Pipelines
- Local or 4WD road
- Railroad
- Wildfire Daily Fire Perimeter
- Bureau of Land Management
- Private



108°28.5'W 108°28'W 108°27.5'W 108°27'W 108°26.5'W 108°26'W 108°25.5'W 108°25'W 108°24.5'W 108°24'W 108°23.5'W 108°23'W 108°22.5'W 108°22'W 108°21.5'W 108°21'W 108°20.5'W 108°20'W 108°19.5'W 108°19'W 108°18.5'W 108°18'W 108°17.5'W 108°17'W 108°16.5'W 108°16'W 108°15.5'W 108°15'W 108°14.5'W



8/8/2020 2223  
 Acres from IR and GPS  
 North American 1983 Datum, Lat/Long  
 Grid