

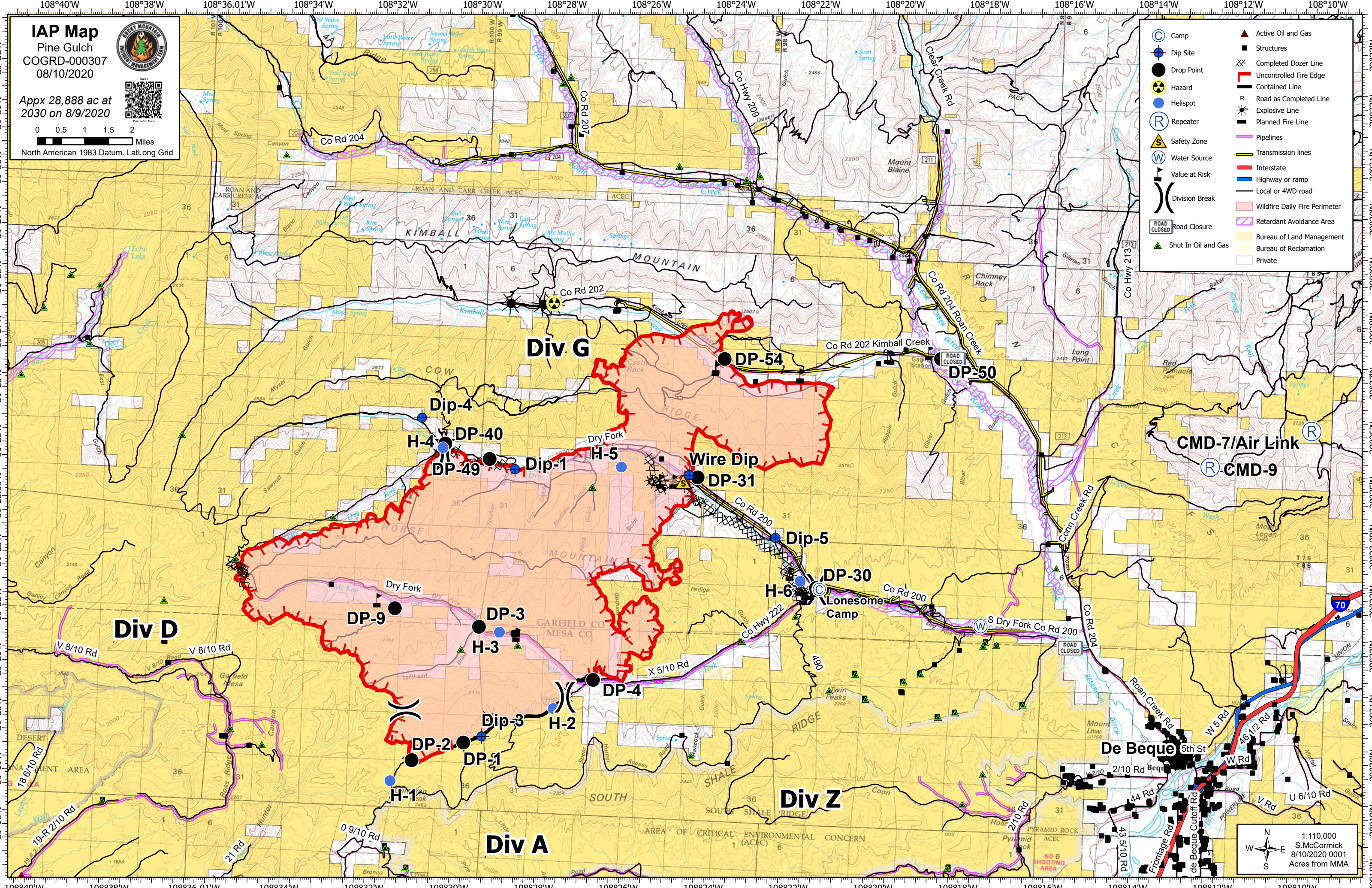
IAP Map
Pine Gulch
COGRD-000307
08/10/2020



Appx 28,888 ac at
2030 on 8/9/2020

North American 1983 Datum, LatLong Grid

- | | | | |
|--|---------------------|--|-------------------------------|
| | Camp | | Active Oil and Gas |
| | Dip Site | | Structures |
| | Drop Point | | Completed Dozer Line |
| | Hazard | | Uncontrolled Fire Edge |
| | Helispot | | Contained Line |
| | Repeater | | Road as Completed Line |
| | Safety Zone | | Explosive Line |
| | Water Source | | Planned Fire Line |
| | Value at Risk | | Pipelines |
| | Division Break | | Transmission lines |
| | Road Closure | | Interstate |
| | Shut In Oil and Gas | | Highway or ramp |
| | | | Local or 4WD road |
| | | | Wildfire Daily Fire Perimeter |
| | | | Retardant Avoidance Area |
| | | | Bureau of Land Management |
| | | | Bureau of Reclamation |
| | | | Private |



1:110,000
S. McCormick
8/10/2020 0001
Acres from MMA