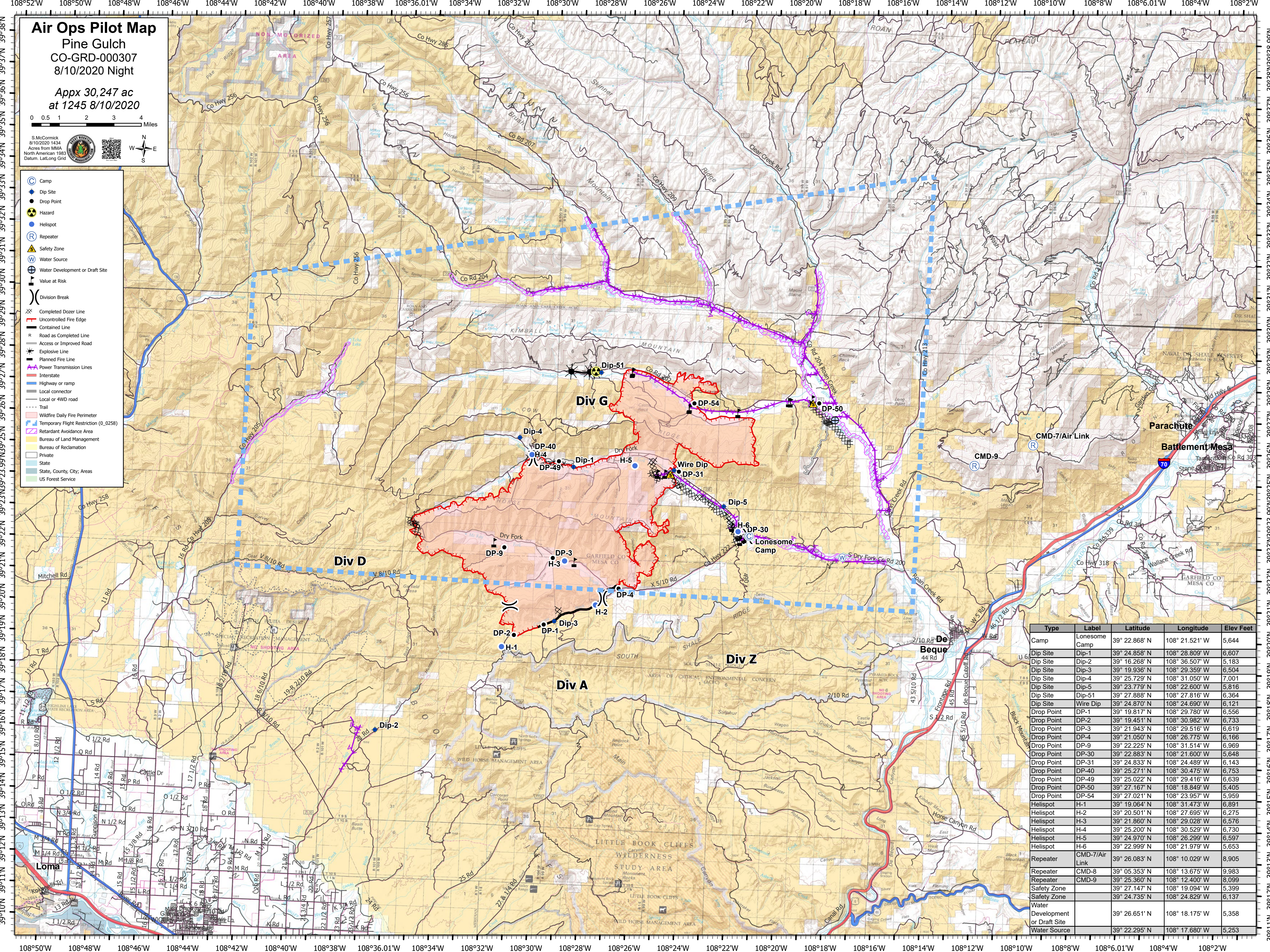


Air Ops Pilot Map
Pine Gulch
CO-GRD-000307
8/10/2020 Night

Appx 30,247 ac
at 1245 8/10/2020



- Camp
- Dip Site
- Drop Point
- Hazard
- Helispot
- Repeater
- Safety Zone
- Water Source
- Water Development or Draft Site
- Value at Risk
- Division Break
- Completed Dozer Line
- Uncontrolled Fire Edge
- Contained Line
- Road as Completed Line
- Access or Improved Road
- Explosive Line
- Planned Fire Line
- Power Transmission Lines
- Interstate
- Highway or ramp
- Local connector
- Local or 4WD road
- Trail
- Wildfire Daily Fire Perimeter
- Temporary Flight Restriction (0.0258)
- Retardant Avoidance Area
- Bureau of Land Management
- Bureau of Reclamation
- Private
- State
- State, County, City, Areas
- US Forest Service



Type	Label	Latitude	Longitude	Elev Feet
Camp	Lonesome Camp	39° 22.868' N	108° 21.521' W	5,644
Dip Site	Dip-1	39° 24.858' N	108° 28.809' W	6,607
Dip Site	Dip-2	39° 16.268' N	108° 36.507' W	5,183
Dip Site	Dip-3	39° 19.936' N	108° 29.359' W	6,504
Dip Site	Dip-4	39° 25.729' N	108° 31.050' W	7,001
Dip Site	Dip-5	39° 23.779' N	108° 22.800' W	5,816
Dip Site	Dip-51	39° 27.888' N	108° 27.816' W	6,364
Dip Site	Wire Dip	39° 24.870' N	108° 24.690' W	6,121
Drop Point	DP-1	39° 19.817' N	108° 29.780' W	6,556
Drop Point	DP-2	39° 19.451' N	108° 30.982' W	6,733
Drop Point	DP-3	39° 21.943' N	108° 29.516' W	6,619
Drop Point	DP-4	39° 21.050' N	108° 26.775' W	6,166
Drop Point	DP-9	39° 22.225' N	108° 31.514' W	6,969
Drop Point	DP-30	39° 22.883' N	108° 21.600' W	5,648
Drop Point	DP-31	39° 24.833' N	108° 24.489' W	6,143
Drop Point	DP-40	39° 25.271' N	108° 30.475' W	6,753
Drop Point	DP-49	39° 25.022' N	108° 29.416' W	6,639
Drop Point	DP-50	39° 27.167' N	108° 18.849' W	5,405
Drop Point	DP-54	39° 27.021' N	108° 23.957' W	5,959
Helispot	H-1	39° 19.064' N	108° 31.473' W	6,891
Helispot	H-2	39° 20.501' N	108° 27.695' W	6,275
Helispot	H-3	39° 21.860' N	108° 29.028' W	6,576
Helispot	H-4	39° 25.200' N	108° 30.529' W	6,730
Helispot	H-5	39° 24.970' N	108° 26.299' W	6,597
Helispot	H-6	39° 22.999' N	108° 21.979' W	5,653
Repeater	CMD-7/Air Link	39° 26.083' N	108° 10.029' W	8,905
Repeater	CMD-8	39° 05.353' N	108° 13.675' W	9,983
Repeater	CMD-9	39° 25.360' N	108° 12.400' W	8,099
Safety Zone		39° 27.147' N	108° 19.094' W	5,399
Safety Zone		39° 24.735' N	108° 24.829' W	6,137
Water Development or Draft Site		39° 26.651' N	108° 18.175' W	5,358
Water Source		39° 22.295' N	108° 17.680' W	5,253