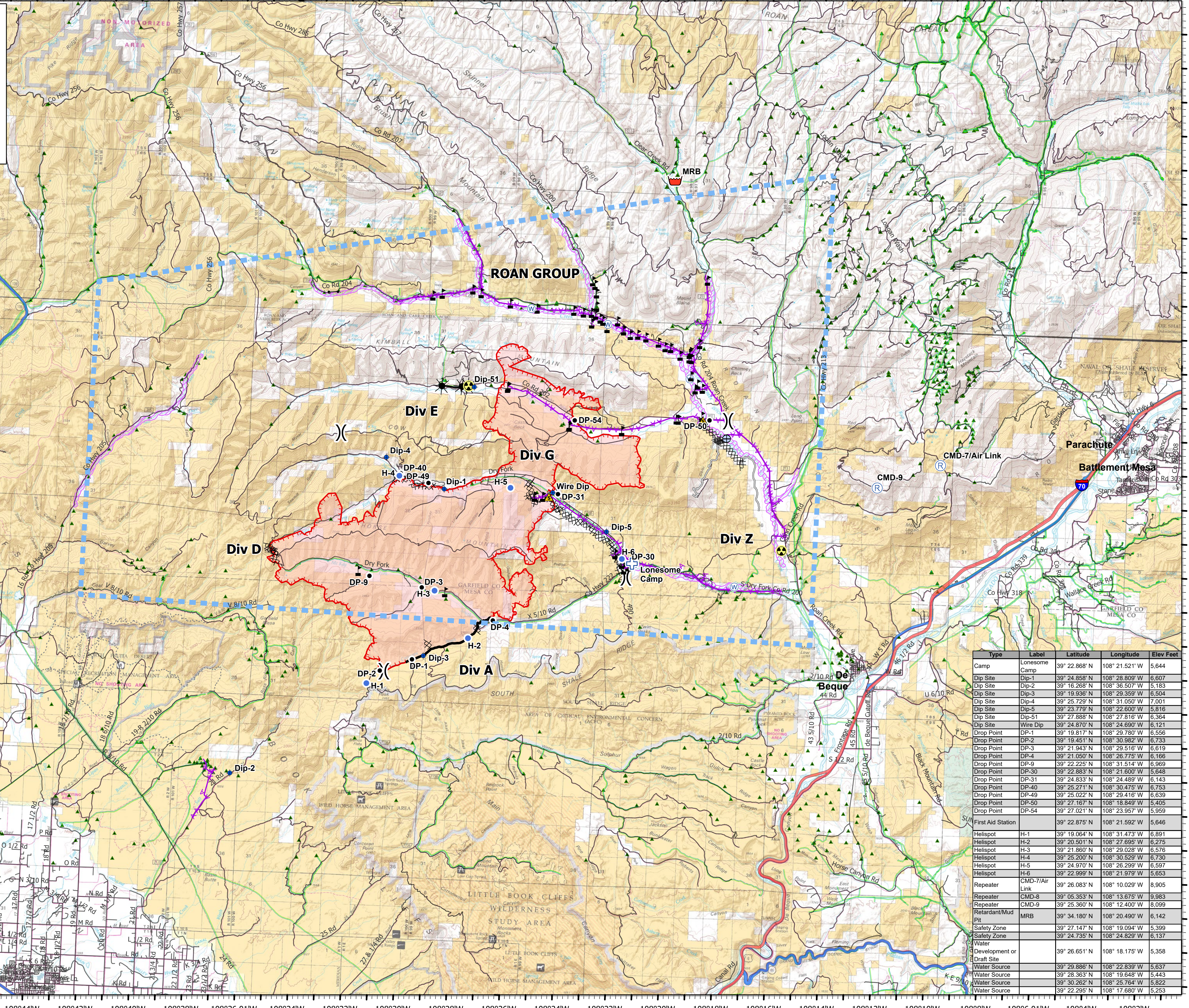


**Air Ops Pilot Map**  
**Pine Gulch**  
**CO-GRD-000307**  
**8/11/2020 Day**  
**Appx 31,719 ac**  
**at 1800 8/10/2020**

0 0.5 1 2 3 4 Miles

S. McCormick  
 8/11/2020 0057  
 Acres from MMA  
 North American 1983  
 Datum: Lat/Long Grid

- Camp
- ◆ Dip Site
- Drop Point
- First Aid Station
- Gate
- ⚠ Hazard
- ⊙ Helispot
- ⊙ Repeater
- ⊙ Retardant/Mud Pit
- ⚠ Safety Zone
- ⊙ Water Source
- ⊙ Water Development or Draft Site
- ⚠ Value at Risk
- ( ) Division Break
- ▲ Oil Well
- XX Completed Dozer Line
- Uncontrolled Fire Edge
- Contained Line
- R Road as Completed Line
- Access or Improved Road
- Explosive Line
- Planned Fire Line
- Power Transmission Lines
- Pipelines
- Interstate
- Highway or ramp
- Local connector
- Local or 4WD road
- Trail
- Wildfire Daily Fire Perimeter
- Temporary Flight Restriction (0,0258)
- Retardant Avoidance Area
- Bureau of Land Management
- Bureau of Reclamation
- Private
- State, County, City, Areas
- US Forest Service



Type	Label	Latitude	Longitude	Elev Foot
Camp	Lonesome Camp	39° 22.868' N	108° 21.521' W	5,644
Dip Site	Dip-1	39° 24.858' N	108° 28.809' W	6,607
Dip Site	Dip-2	39° 16.268' N	108° 36.507' W	5,183
Dip Site	Dip-3	39° 19.936' N	108° 29.359' W	6,504
Dip Site	Dip-4	39° 25.729' N	108° 31.050' W	7,001
Dip Site	Dip-5	39° 23.779' N	108° 22.600' W	5,816
Dip Site	Dip-51	39° 27.888' N	108° 27.816' W	6,364
Dip Site	Wire Dip	39° 24.870' N	108° 24.690' W	6,121
Drop Point	DP-1	39° 19.817' N	108° 29.780' W	6,556
Drop Point	DP-2	39° 19.451' N	108° 30.982' W	6,733
Drop Point	DP-3	39° 21.943' N	108° 29.516' W	6,619
Drop Point	DP-4	39° 21.050' N	108° 26.775' W	6,166
Drop Point	DP-9	39° 22.225' N	108° 31.514' W	6,969
Drop Point	DP-30	39° 22.883' N	108° 21.600' W	5,648
Drop Point	DP-31	39° 24.833' N	108° 24.489' W	6,143
Drop Point	DP-40	39° 25.271' N	108° 30.475' W	6,763
Drop Point	DP-49	39° 25.022' N	108° 29.416' W	6,639
Drop Point	DP-50	39° 27.167' N	108° 18.849' W	5,405
Drop Point	DP-54	39° 27.021' N	108° 23.957' W	5,959
First Aid Station	H-1	39° 22.875' N	108° 21.592' W	5,646
Helispot	H-1	39° 19.064' N	108° 31.473' W	6,891
Helispot	H-2	39° 20.501' N	108° 27.695' W	6,275
Helispot	H-3	39° 21.860' N	108° 29.028' W	6,576
Helispot	H-4	39° 25.200' N	108° 30.529' W	6,730
Helispot	H-5	39° 24.970' N	108° 26.299' W	6,597
Helispot	H-6	39° 22.999' N	108° 21.979' W	5,653
Repeater	CMD-7/Air Link	39° 26.083' N	108° 10.029' W	8,905
Repeater	CMD-8	39° 05.353' N	108° 13.675' W	9,983
Repeater	CMD-9	39° 25.360' N	108° 12.400' W	8,099
Retardant/Mud Pit	MRB	39° 34.180' N	108° 20.490' W	6,142
Safety Zone		39° 27.147' N	108° 19.094' W	5,399
Safety Zone		39° 24.735' N	108° 24.829' W	6,137
Water Development or Draft Site		39° 26.651' N	108° 18.175' W	5,358
Water Source		39° 29.886' N	108° 22.839' W	5,637
Water Source		39° 28.363' N	108° 19.648' W	5,443
Water Source		39° 30.262' N	108° 25.764' W	5,822
Water Source		39° 22.295' N	108° 17.680' W	5,263