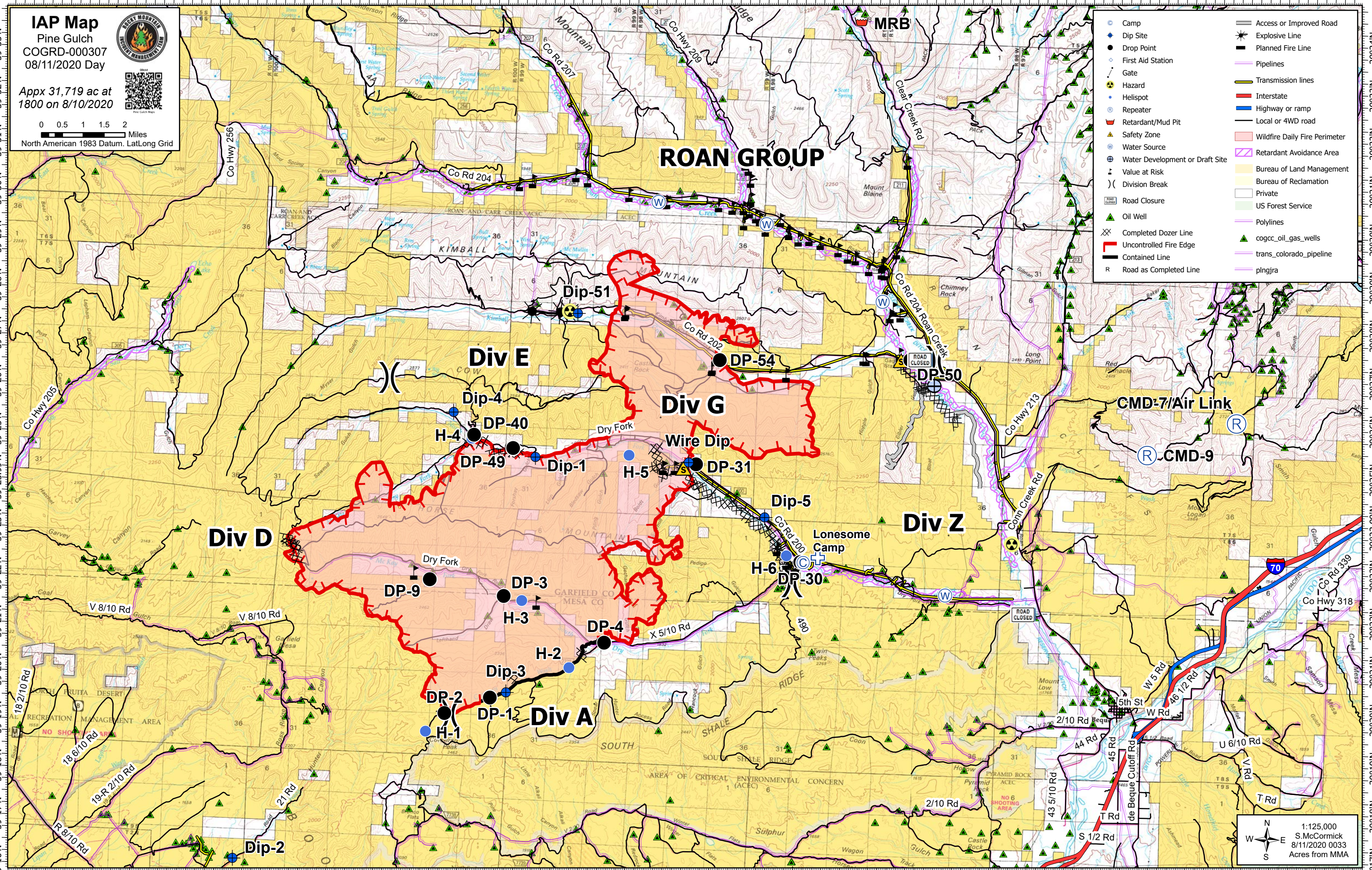


IAP Map
 Pine Gulch
 COGRD-000307
 08/11/2020 Day

Appx 31,719 ac at
 1800 on 8/10/2020

0 0.5 1 1.5 2 Miles
 North American 1983 Datum, LatLong Grid

- Camp
- ◆ Dip Site
- Drop Point
- First Aid Station
- ⋈ Gate
- ☠ Hazard
- Helispot
- Repeater
- ⬮ Retardant/Mud Pit
- ▲ Safety Zone
- ⊕ Water Source
- ⊕ Water Development or Draft Site
- ⊕ Value at Risk
- ⊕ Division Break
- ⊕ Road Closure
- ⊕ Completed Dozer Line
- ⊕ Uncontrolled Fire Edge
- ⊕ Contained Line
- Access or Improved Road
- ⊕ Explosive Line
- ⊕ Planned Fire Line
- Pipelines
- Transmission lines
- Interstate
- Highway or ramp
- Local or 4WD road
- Wildfire Daily Fire Perimeter
- Retardant Avoidance Area
- Bureau of Land Management
- Bureau of Reclamation
- Private
- US Forest Service
- Polylines
- ▲ cogcc_oil_gas_wells
- trans_colorado_pipeline
- pingjra



1:125,000
 S.McCormick
 8/11/2020 0033
 Acres from MMA