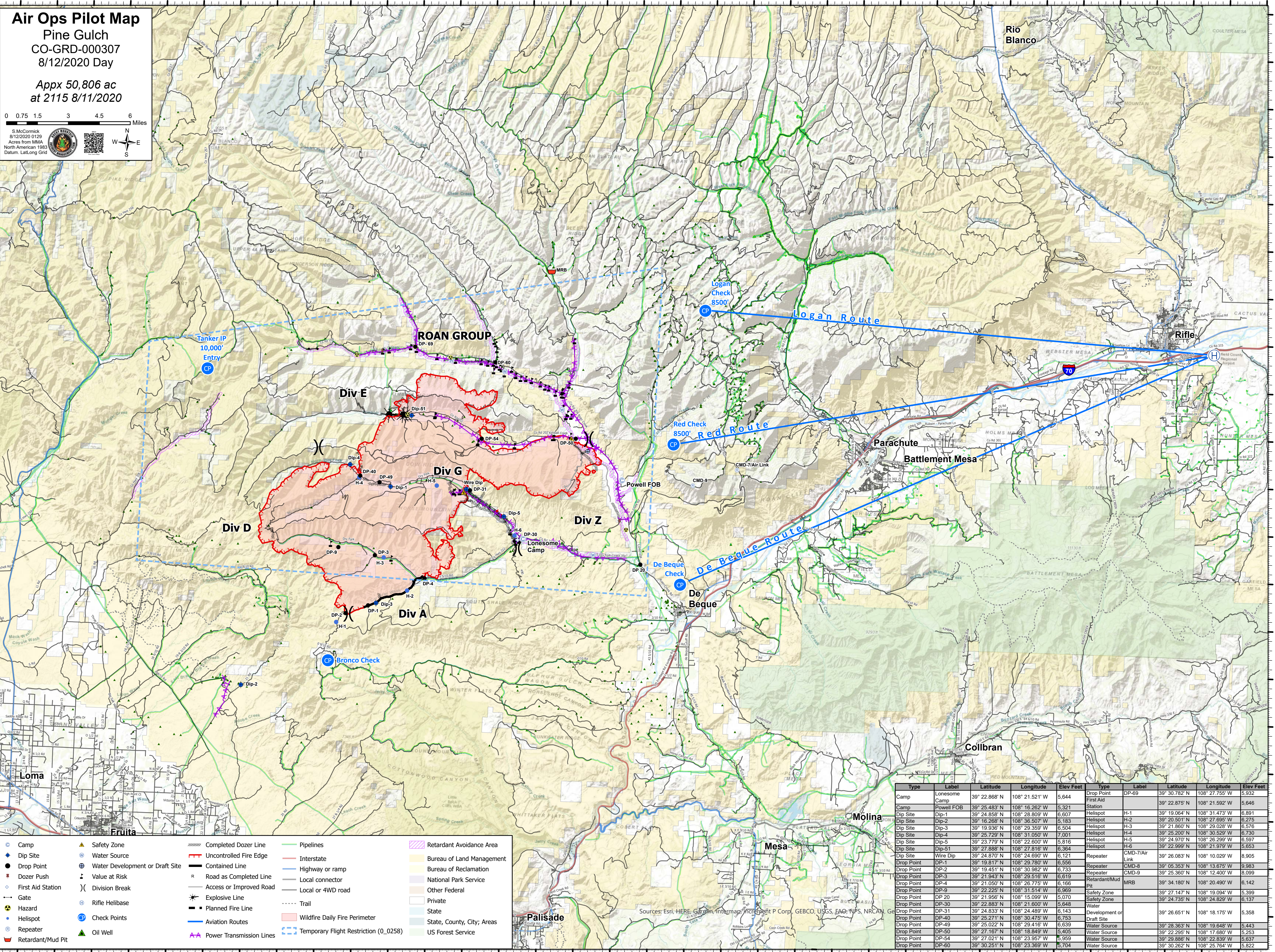


Air Ops Pilot Map
 Pine Gulch
 CO-GRD-000307
 8/12/2020 Day
 Appx 50,806 ac
 at 2115 8/11/2020



S. McCormick
 8/12/2020 11:29
 North American 1983
 Datum: Lat, Long Grid



● Camp	▲ Safety Zone	----- Completed Dozer Line	— Pipelines	▨ Retardant Avoidance Area
● Dip Site	⊕ Water Source	— Uncontrolled Fire Edge	— Interstate	▨ Bureau of Land Management
● Drop Point	⊕ Water Development or Draft Site	— Contained Line	— Highway or ramp	▨ Bureau of Reclamation
● Dozer Push	⊕ Value at Risk	— Road as Completed Line	— Local connector	▨ National Park Service
● First Aid Station	⊕ Division Break	— Access or Improved Road	— Local or 4WD road	▨ Other Federal
● Gate	⊕ Rifle Helibase	— Explosive Line	— Trail	▨ Private
● Hazard	⊕ Check Points	— Planned Fire Line	— Wildfire Daily Fire Perimeter	▨ State
● Helispot	⊕ Repeater	— Aviation Routes	— Temporary Flight Restriction (0_0258)	▨ State, County, City; Areas
● Repeater	▲ Oil Well	— Power Transmission Lines		▨ US Forest Service
● Retardant/Mud Pit				

Type	Label	Latitude	Longitude	Elev Feet	Type	Label	Latitude	Longitude	Elev Feet
Camp	Lonesome Camp	39° 22.868' N	108° 21.521' W	5,644	Drop Point	DP-69	39° 30.782' N	108° 27.755' W	5,932
Camp	Powell FOB	39° 25.483' N	108° 16.262' W	5,321	Drop Point	DP-1	39° 22.875' N	108° 21.592' W	5,646
Dip Site	Dip-1	39° 24.858' N	108° 28.809' W	6,607	Drop Point	DP-2	39° 19.064' N	108° 31.473' W	6,891
Dip Site	Dip-2	39° 18.268' N	108° 36.507' W	5,183	Drop Point	DP-3	39° 20.501' N	108° 27.695' W	6,275
Dip Site	Dip-3	39° 19.936' N	108° 29.359' W	6,504	Drop Point	DP-4	39° 21.860' N	108° 29.028' W	6,576
Dip Site	Dip-4	39° 25.729' N	108° 31.050' W	7,001	Drop Point	DP-5	39° 25.200' N	108° 30.529' W	6,730
Dip Site	Dip-5	39° 23.779' N	108° 22.600' W	5,816	Drop Point	DP-6	39° 24.970' N	108° 26.299' W	6,597
Dip Site	Dip-51	39° 27.888' N	108° 27.816' W	6,364	Drop Point	DP-7	39° 22.999' N	108° 21.979' W	5,653
Dip Site	Wire Dip	39° 24.870' N	108° 24.690' W	6,121	Drop Point	DP 20	39° 26.083' N	108° 10.029' W	8,905
Drop Point	DP-1	39° 19.817' N	108° 29.780' W	6,556	Drop Point	DP-30	39° 05.353' N	108° 13.675' W	9,983
Drop Point	DP-2	39° 19.451' N	108° 30.982' W	6,733	Drop Point	DP-40	39° 25.360' N	108° 12.400' W	8,099
Drop Point	DP-3	39° 21.943' N	108° 29.516' W	6,619	Drop Point	DP-49	39° 34.180' N	108° 20.490' W	6,142
Drop Point	DP-4	39° 21.050' N	108° 26.775' W	6,166	Drop Point	DP-50	39° 27.147' N	108° 19.094' W	5,399
Drop Point	DP-9	39° 22.225' N	108° 31.514' W	6,969	Drop Point	DP-54	39° 24.735' N	108° 24.829' W	6,137
Drop Point	DP 20	39° 21.956' N	108° 15.099' W	5,070	Drop Point	DP-60	39° 26.651' N	108° 18.175' W	5,358
Drop Point	DP-30	39° 22.883' N	108° 21.600' W	5,648	Drop Point	DP-69	39° 28.363' N	108° 19.648' W	5,443
Drop Point	DP-31	39° 24.833' N	108° 24.489' W	6,143	Drop Point	DP-70	39° 27.295' N	108° 17.680' W	5,253
Drop Point	DP-40	39° 25.271' N	108° 30.473' W	6,753	Drop Point	DP-80	39° 29.886' N	108° 22.839' W	5,637
Drop Point	DP-49	39° 25.022' N	108° 29.416' W	6,639	Drop Point	DP-85	39° 30.262' N	108° 25.764' W	5,822
Drop Point	DP-50	39° 27.167' N	108° 18.849' W	5,405					
Drop Point	DP-54	39° 27.021' N	108° 23.957' W	5,959					
Drop Point	DP-60	39° 30.251' N	108° 23.369' W	5,704					

108°48'W 108°46'W 108°44'W 108°42'W 108°40'W 108°38'W 108°36'W 108°34'W 108°32'W 108°30'W 108°28'W 108°26'W 108°24'W 108°22'W 108°20'W 108°18'W 108°16'W 108°14'W 108°12'W 108°10'W 108°8'W 108°6.01'W 108°4'W 108°2'W 108°W 107°58'W 107°56'W 107°54'W 107°52'W 107°50'W 107°48'W 107°46'W 107°44'W 107°42'W