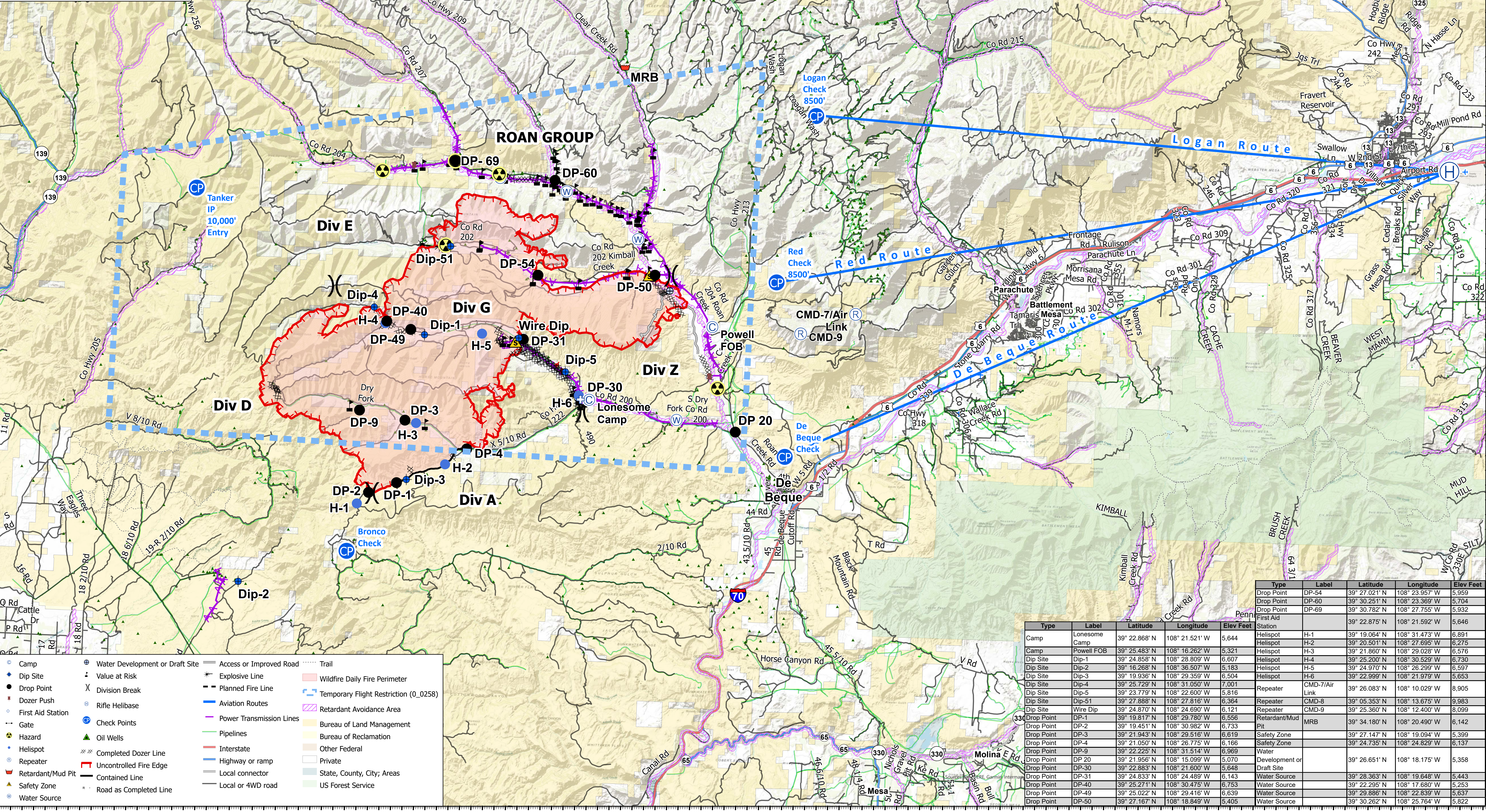


Air Ops

Pine Gulch
COGRD-000307
8/12/2020 Day

Appx 50,806 ac at
2115 8/11/20



- Camp
- + Dip Site
- Drop Point
- + Dozer Push
- + First Aid Station
- + Gate
- Helispot
- + Repeater
- + Retardant/Mud Pit
- + Safety Zone
- + Water Source
- + Water Development or Draft Site
- + Value at Risk
- + Division Break
- + Rifle Helibase
- + Check Points
- + Hazard
- + Oil Wells
- + Completed Dozer Line
- + Uncontrolled Fire Edge
- + Contained Line
- + Road as Completed Line
- + Access or Improved Road
- + Explosive Line
- + Planned Fire Line
- + Aviation Routes
- + Power Transmission Lines
- + Pipelines
- + Interstate
- + Highway or ramp
- + Local connector
- + Local or 4WD road
- + Trail
- + Wildfire Daily Fire Perimeter
- + Temporary Flight Restriction (0_0258)
- + Retardant Avoidance Area
- + Bureau of Land Management
- + Bureau of Reclamation
- + Other Federal
- + Private
- + State, County, City; Areas
- + US Forest Service

Type	Label	Latitude	Longitude	Elev Feet
Drop Point	DP-54	39° 27.021' N	108° 23.957' W	5,959
Drop Point	DP-60	39° 30.251' N	108° 23.369' W	5,704
Drop Point	DP-69	39° 30.782' N	108° 27.755' W	5,932
First Aid Station		39° 22.875' N	108° 21.592' W	5,646
Camp	Lonesome Camp	39° 25.483' N	108° 16.262' W	5,321
Camp	Powell FOB	39° 24.858' N	108° 28.809' W	6,607
Dip Site	Dip-1	39° 16.268' N	108° 36.507' W	5,183
Dip Site	Dip-2	39° 19.936' N	108° 29.359' W	6,504
Dip Site	Dip-3	39° 25.729' N	108° 31.050' W	7,001
Dip Site	Dip-4	39° 23.779' N	108° 22.600' W	5,816
Dip Site	Dip-5	39° 27.888' N	108° 27.816' W	6,364
Dip Site	Wire Dip	39° 24.870' N	108° 24.690' W	6,121
Drop Point	DP-1	39° 19.817' N	108° 29.780' W	6,556
Drop Point	DP-2	39° 19.451' N	108° 30.982' W	6,733
Drop Point	DP-3	39° 21.943' N	108° 29.516' W	6,619
Drop Point	DP-4	39° 21.050' N	108° 26.775' W	6,166
Drop Point	DP-9	39° 22.225' N	108° 31.514' W	6,969
Drop Point	DP 20	39° 21.956' N	108° 15.099' W	5,070
Drop Point	DP-30	39° 22.883' N	108° 21.600' W	5,648
Drop Point	DP-31	39° 24.833' N	108° 24.489' W	6,143
Drop Point	DP-40	39° 25.271' N	108° 30.475' W	6,753
Drop Point	DP-49	39° 25.022' N	108° 29.417' W	6,639
Drop Point	DP-50	39° 27.167' N	108° 18.849' W	5,405
Repeater	CMD-7/Air Link	39° 26.083' N	108° 10.029' W	8,905
Repeater	CMD-8	39° 05.353' N	108° 13.675' W	9,983
Repeater	CMD-9	39° 25.360' N	108° 12.400' W	8,099
Retardant/Mud Pit	MRB	39° 34.180' N	108° 20.490' W	6,142
Safety Zone		39° 27.147' N	108° 19.094' W	5,399
Safety Zone		39° 24.735' N	108° 24.829' W	6,137
Water		39° 26.651' N	108° 18.175' W	5,358
Development or Draft Site		39° 28.363' N	108° 19.648' W	5,443
Water Source		39° 22.295' N	108° 17.680' W	5,253
Water Source		39° 29.886' N	108° 22.839' W	5,637
Water Source		39° 30.262' N	108° 25.764' W	5,822