

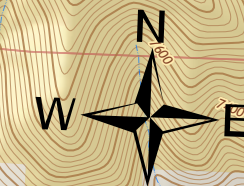



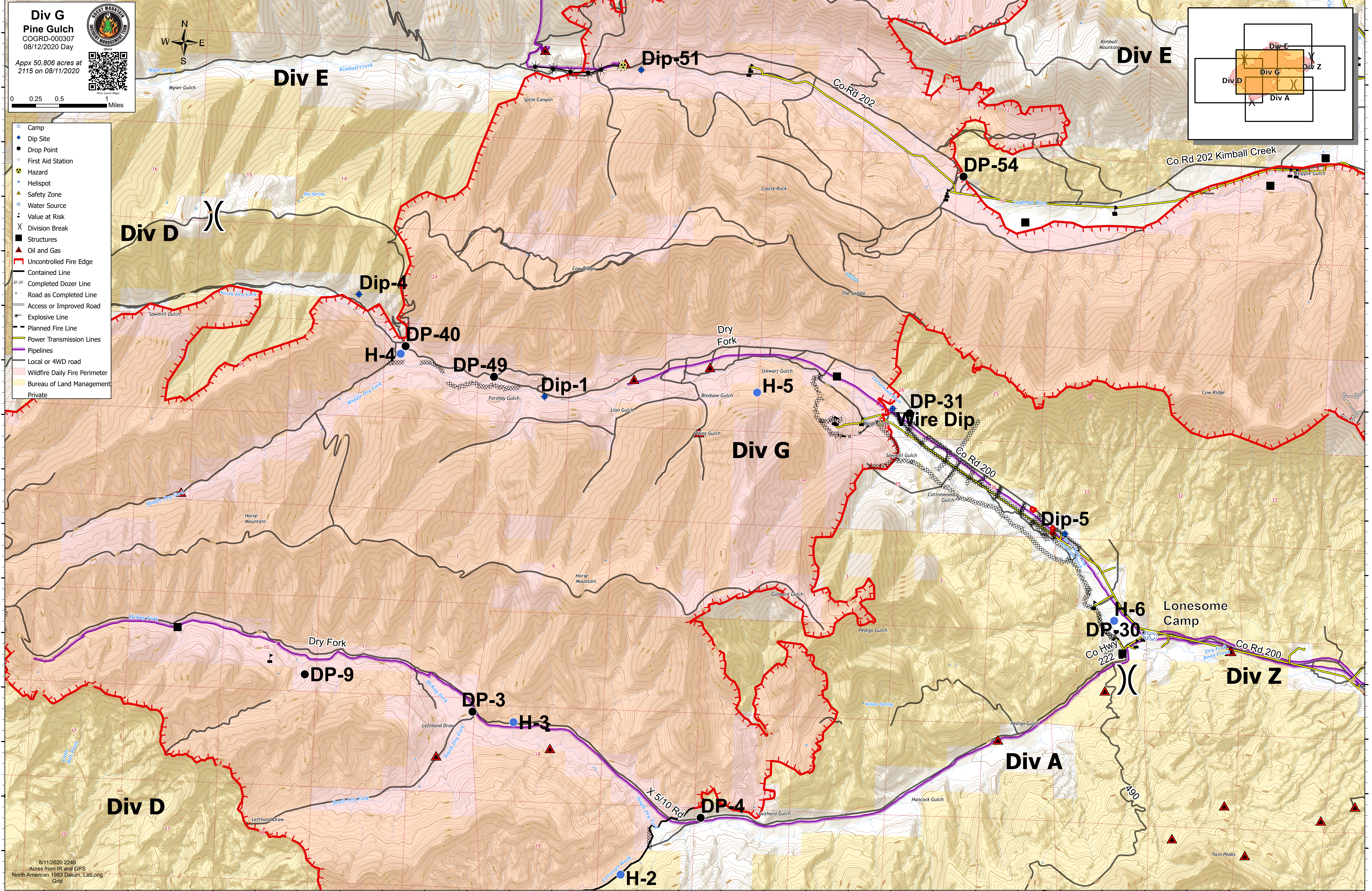
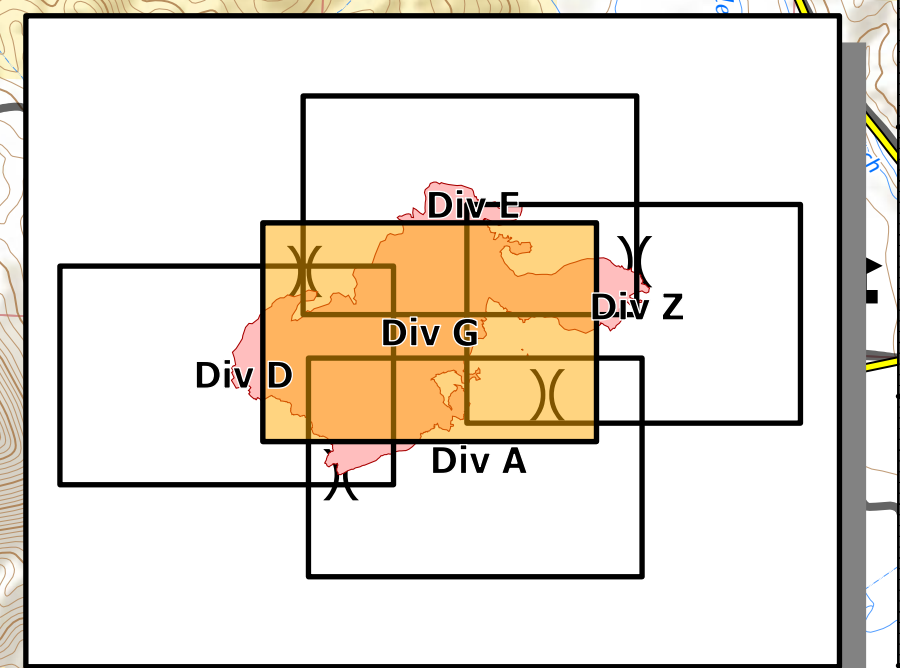
108°35'W 108°34.5'W 108°34'W 108°33.5'W 108°33'W 108°32.5'W 108°32'W 108°31.5'W 108°31'W 108°30.5'W 108°30'W 108°29.5'W 108°29'W 108°28.5'W 108°28'W 108°27.5'W 108°27'W 108°26.5'W 108°26'W 108°25.5'W 108°25'W 108°24.5'W 108°24'W 108°23.5'W 108°23'W 108°22.5'W 108°22'W 108°21.5'W 108°21.01'W 108°20.5'W 108°20'W 108°19.5'W

**Div G**  
**Pine Gulch**  
 COGRD-000307  
 08/12/2020 Day

Appx 50,806 acres at 2115 on 08/11/2020

- Camp
- Dip Site
- Drop Point
- First Aid Station
- Hazard
- Helispot
- Safety Zone
- Water Source
- Value at Risk
- Division Break
- Structures
- Oil and Gas
- Uncontrolled Fire Edge
- Contained Line
- Completed Dozer Line
- Road as Completed Line
- Access or Improved Road
- Explosive Line
- Planned Fire Line
- Power Transmission Lines
- Pipelines
- Local or 4WD road
- Wildfire Daily Fire Perimeter
- Bureau of Land Management
- Private



108°34.5'W 108°34'W 108°33.5'W 108°33'W 108°32.5'W 108°32'W 108°31.5'W 108°31'W 108°30.5'W 108°30'W 108°29.5'W 108°29'W 108°28.5'W 108°28'W 108°27.5'W 108°27'W 108°26.5'W 108°26'W 108°25.5'W 108°25'W 108°24.5'W 108°24'W 108°23.5'W 108°23'W 108°22.5'W 108°22'W 108°21.5'W 108°21.01'W 108°20.5'W 108°20'W 108°19.5'W