



108°33.5'W 108°33'W 108°32.5'W 108°32'W 108°31.5'W 108°31'W 108°30.5'W 108°30'W 108°29.5'W 108°29'W 108°28.5'W 108°28'W 108°27.5'W 108°27'W 108°26.5'W 108°26'W 108°25.5'W 108°25'W 108°24.5'W 108°24'W 108°23.5'W 108°23'W 108°22.5'W 108°22'W 108°21.5'W 108°21'W 108°20.5'W 108°20'W 108°19.5'W 108°19'W 108°18.5'W 108°18'W

Div E
Pine Gulch
COGRD-000307
08/12/2020 Night

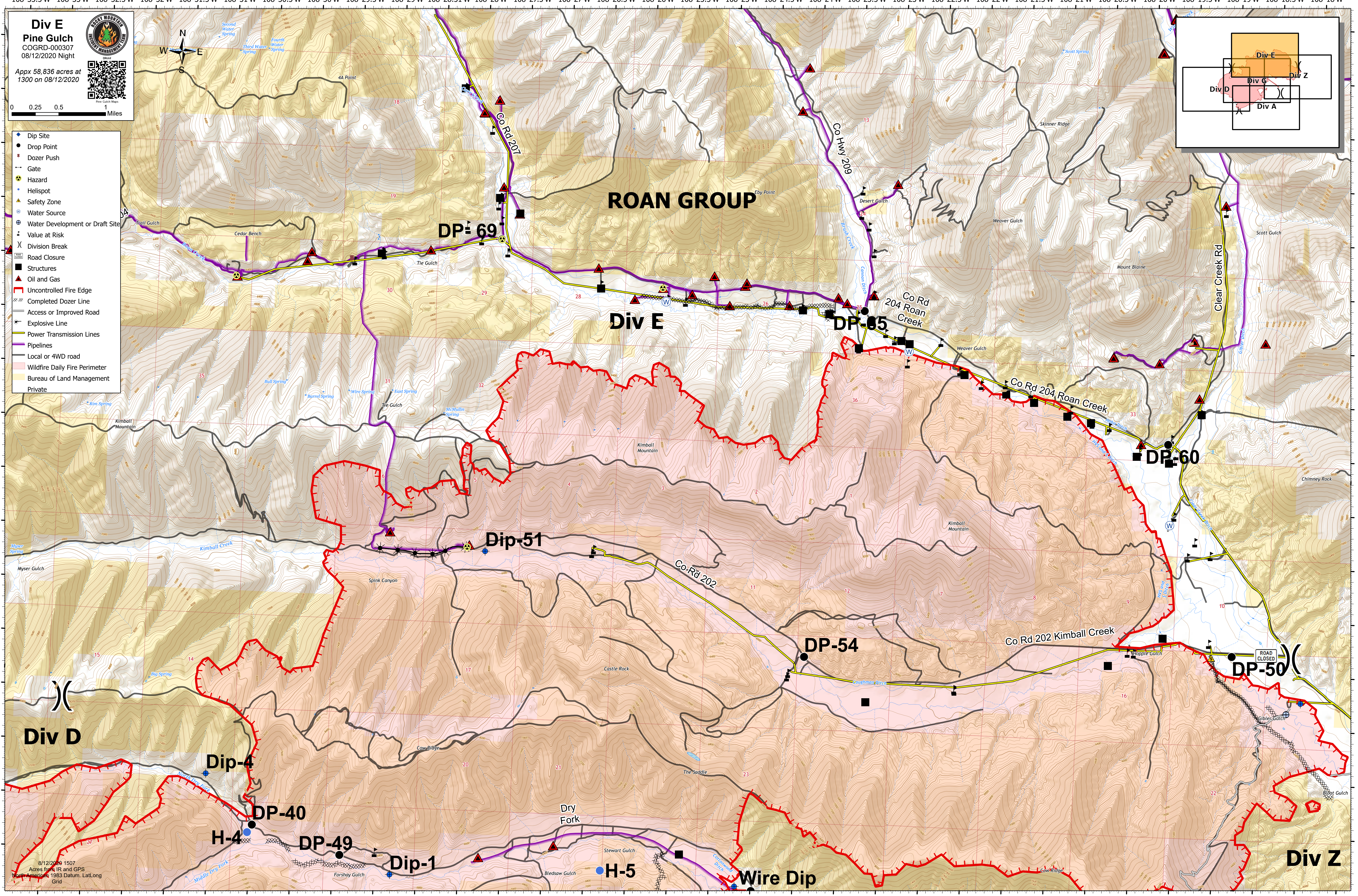
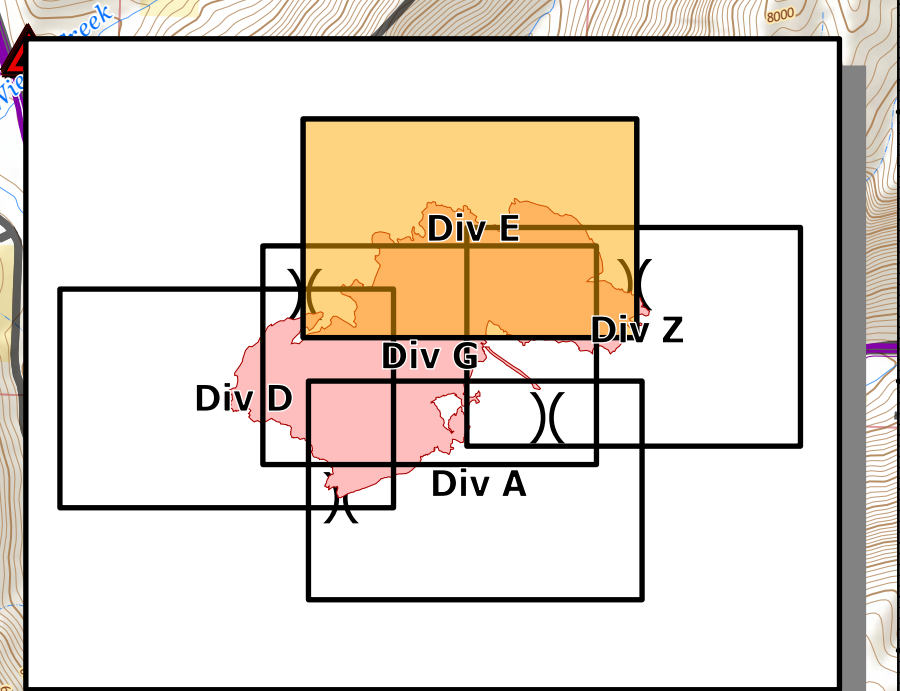


Appx 58,836 acres at 1300 on 08/12/2020



0 0.25 0.5 1 Miles

- Dip Site
- Drop Point
- Dozer Push
- Gate
- Hazard
- Helispot
- Safety Zone
- Water Source
- Water Development or Draft Site
- Value at Risk
- Division Break
- Road Closure
- Structures
- Oil and Gas
- Uncontrolled Fire Edge
- Completed Dozer Line
- Access or Improved Road
- Explosive Line
- Power Transmission Lines
- Pipelines
- Local or 4WD road
- Wildfire Daily Fire Perimeter
- Bureau of Land Management
- Private



108°33'W 108°32.5'W 108°32'W 108°31.5'W 108°31'W 108°30.5'W 108°30'W 108°29.5'W 108°29'W 108°28.5'W 108°28'W 108°27.5'W 108°27'W 108°26.5'W 108°26'W 108°25.5'W 108°25'W 108°24.5'W 108°24'W 108°23.5'W 108°23'W 108°22.5'W 108°22'W 108°21.5'W 108°21'W 108°20.5'W 108°20'W 108°19.5'W 108°19'W 108°18.5'W 108°18'W 108°17.5'W