

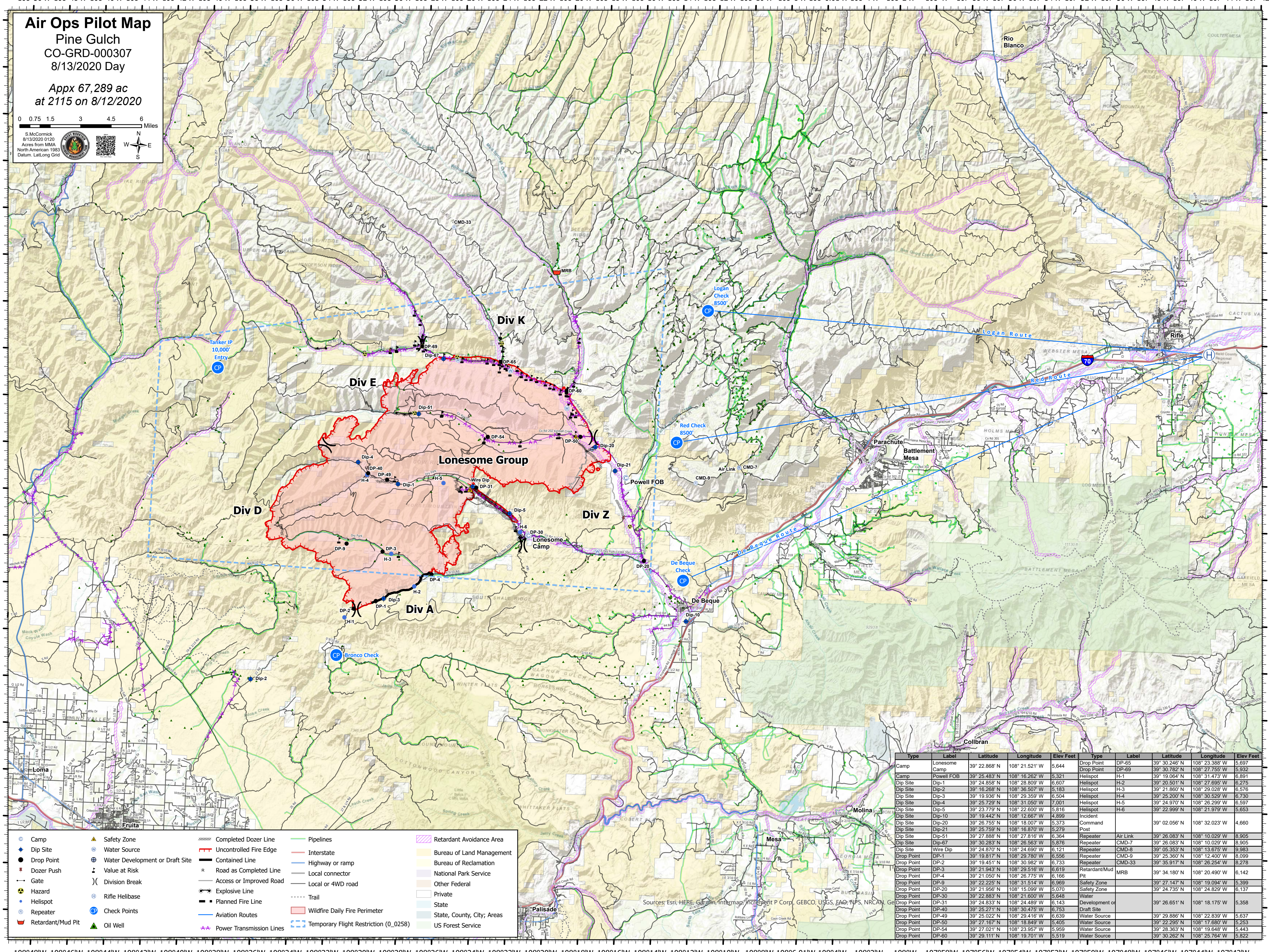
# Air Ops Pilot Map

## Pine Gulch

CO-GRD-000307  
8/13/2020 Day

Appx 67,289 ac  
at 2115 on 8/12/2020

S. McCormick  
8/13/2020 11:20  
Acres from MMA  
North American 1983  
Datum: Lat, Long Grid



- Dip Site
- Drop Point
- Dozer Push
- Gate
- Hazard
- Helispot
- Repeater
- Retardant/Mud Pit
- Safety Zone
- Water Source
- Water Development or Draft Site
- Value at Risk
- Division Break
- Rifle Helibase
- Check Points
- Completed Dozer Line
- Uncontrolled Fire Edge
- Contained Line
- Road as Completed Line
- Access or Improved Road
- Explosive Line
- Planned Fire Line
- Aviation Routes
- Pipelines
- Interstate
- Highway or ramp
- Local connector
- Local or 4WD road
- Trail
- Wildfire Daily Fire Perimeter
- Retardant Avoidance Area
- Bureau of Land Management
- Bureau of Reclamation
- National Park Service
- Other Federal
- Private
- State, County, City, Areas
- US Forest Service
- Power Transmission Lines
- Temporary Flight Restriction (0\_0258)

Type	Label	Latitude	Longitude	Elev Feet	Type	Label	Latitude	Longitude	Elev Feet
Camp	Lonesome	39° 22.868' N	108° 21.521' W	5,644	Drop Point	DP-65	39° 30.246' N	108° 23.388' W	5,697
Camp	Powell FOB	39° 25.483' N	108° 16.262' W	5,321	Drop Point	DP-69	39° 30.782' N	108° 27.765' W	5,932
Dip Site	Dip-1	39° 24.858' N	108° 28.809' W	6,607	Helispot	H-1	39° 19.064' N	108° 31.473' W	6,891
Dip Site	Dip-2	39° 16.268' N	108° 36.507' W	5,183	Helispot	H-2	39° 20.501' N	108° 27.696' W	6,275
Dip Site	Dip-3	39° 19.936' N	108° 29.359' W	6,504	Helispot	H-3	39° 21.860' N	108° 29.028' W	6,576
Dip Site	Dip-4	39° 25.729' N	108° 31.050' W	7,001	Helispot	H-4	39° 25.200' N	108° 30.529' W	6,730
Dip Site	Dip-5	39° 23.779' N	108° 22.600' W	5,816	Helispot	H-5	39° 24.970' N	108° 26.299' W	6,597
Dip Site	Dip-10	39° 19.442' N	108° 12.667' W	4,899	Incident				
Dip Site	Dip-20	39° 26.755' N	108° 18.007' W	5,373	Command				
Dip Site	Dip-21	39° 25.759' N	108° 16.870' W	5,279	Post				
Dip Site	Dip-51	39° 27.888' N	108° 27.816' W	6,364	Repeater	Air Link	39° 26.083' N	108° 10.029' W	8,905
Dip Site	Dip-67	39° 30.283' N	108° 26.563' W	5,876	Repeater	CMD-7	39° 26.083' N	108° 10.029' W	8,905
Dip Site	Wire Dip	39° 24.870' N	108° 24.690' W	6,121	Repeater	CMD-8	39° 05.353' N	108° 13.675' W	9,983
Drop Point	DP-1	39° 19.817' N	108° 29.780' W	6,556	Repeater	CMD-9	39° 25.360' N	108° 12.400' W	8,099
Drop Point	DP-2	39° 19.451' N	108° 30.982' W	6,733	Repeater	CMD-33	39° 35.917' N	108° 26.254' W	8,278
Drop Point	DP-3	39° 21.943' N	108° 29.516' W	6,619	Retardant/Mud Pit	MRB	39° 34.180' N	108° 20.490' W	6,142
Drop Point	DP-4	39° 21.050' N	108° 26.775' W	6,166	Safety Zone				
Drop Point	DP-9	39° 22.225' N	108° 31.514' W	6,969	Safety Zone				
Drop Point	DP-20	39° 21.956' N	108° 15.099' W	5,070	Safety Zone				
Drop Point	DP-30	39° 22.883' N	108° 21.600' W	5,648	Water				
Drop Point	DP-31	39° 19.451' N	108° 24.489' W	6,143	Development or Draft Site				
Drop Point	DP-40	39° 25.271' N	108° 30.475' W	6,753	Water Source				
Drop Point	DP-49	39° 25.022' N	108° 29.415' W	6,639	Water Source				
Drop Point	DP-50	39° 27.167' N	108° 18.849' W	5,405	Water Source				
Drop Point	DP-54	39° 27.021' N	108° 23.957' W	5,959	Water Source				
Drop Point	DP-60	39° 29.111' N	108° 19.701' W	5,519	Water Source				

108°48'W 108°46'W 108°44'W 108°42'W 108°40'W 108°38'W 108°36'W 108°34'W 108°32'W 108°30'W 108°28'W 108°26'W 108°24'W 108°22'W 108°20'W 108°18'W 108°16'W 108°14'W 108°12'W 108°10'W 108°8'W 108°6.01'W 108°4'W 108°2'W 108°W 107°58'W 107°56'W 107°54'W 107°52'W 107°50'W 107°48'W 107°46'W 107°44'W 107°42'W