



108°27.5'W 108°27'W 108°26.5'W 108°26'W 108°25.5'W 108°25'W 108°24.5'W 108°24'W 108°23.5'W 108°23'W 108°22.5'W 108°22'W 108°21.5'W 108°21.01'W 108°20.5'W 108°20'W 108°19.5'W 108°19'W 108°18.5'W 108°18'W 108°17.5'W 108°17'W 108°16.5'W 108°16'W 108°15.5'W 108°15'W 108°14.5'W 108°14'W 108°13.51'W 108°13'W 108°12.5'W 108°12'W

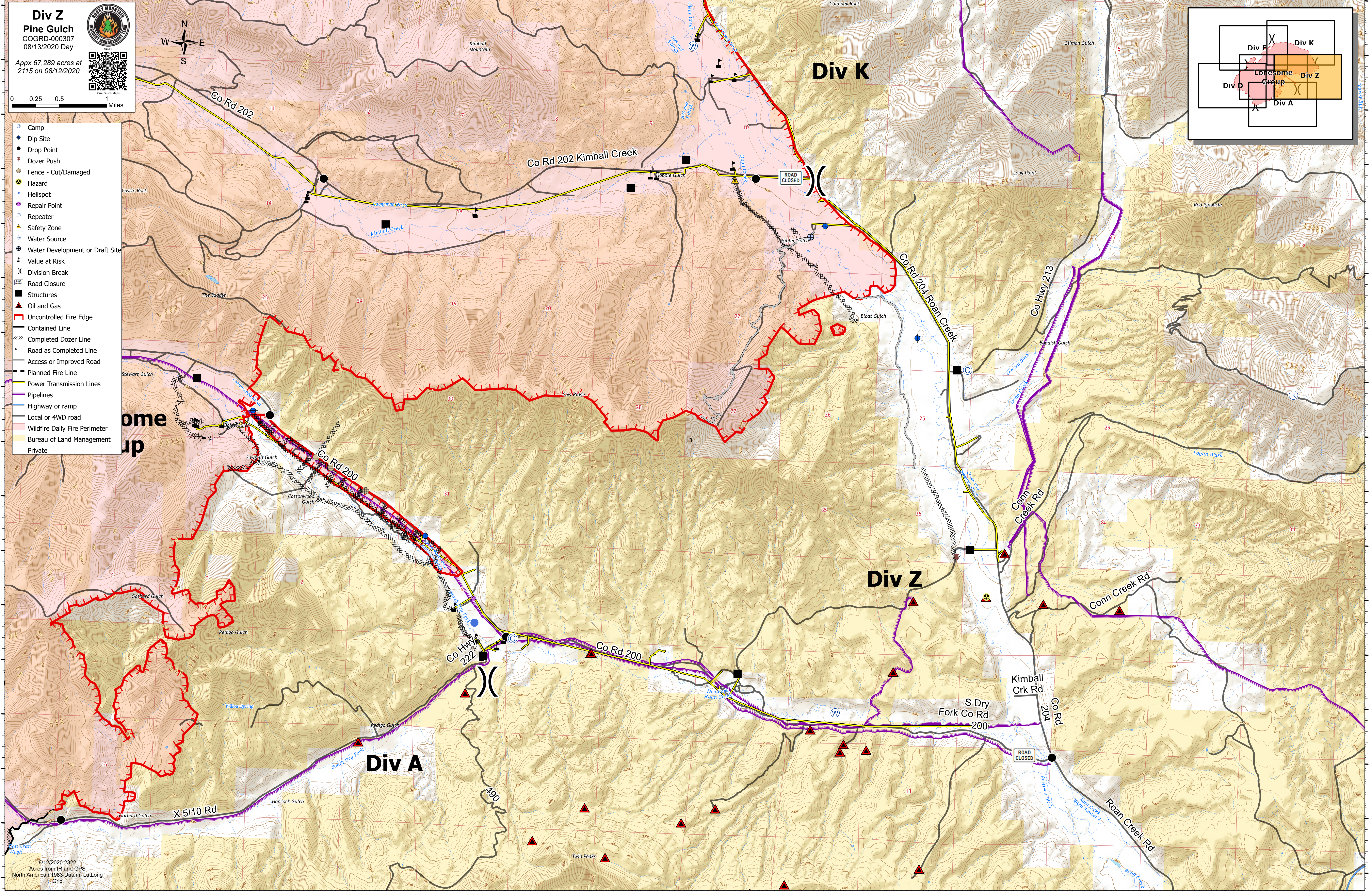
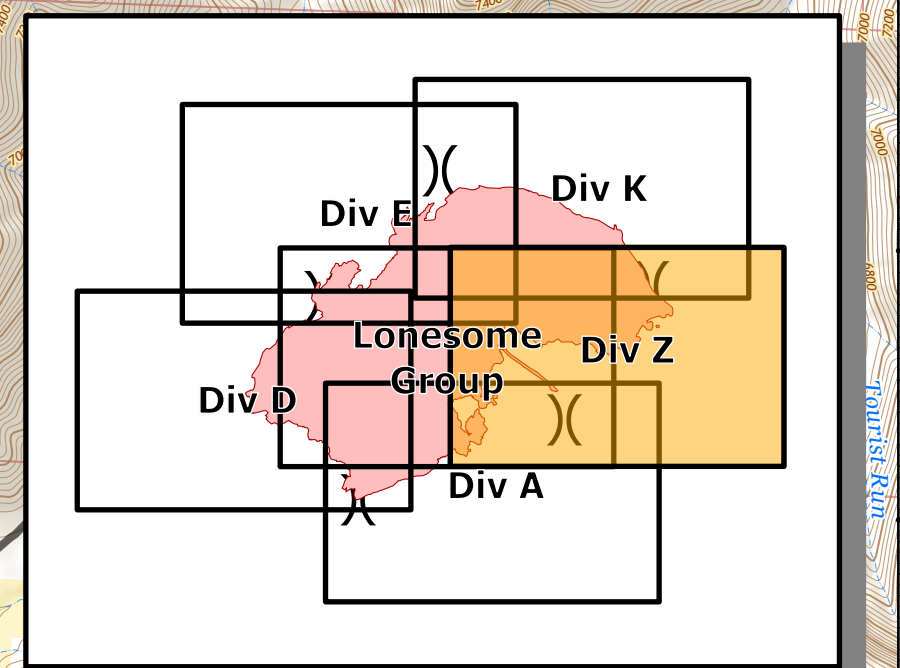
Div Z
Pine Gulch
 COGRD-000307
 08/13/2020 Day

Appx 67,289 acres at
 2115 on 08/12/2020

0 0.25 0.5 1 Miles

- Camp
- Dip Site
- Drop Point
- Dozer Push
- Fence - Cut/Damaged
- Hazard
- Helispot
- Repair Point
- Repeater
- Safety Zone
- Water Source
- Water Development or Draft Site
- Value at Risk
- Division Break
- Road Closure
- Structures
- Oil and Gas
- Uncontrolled Fire Edge
- Contained Line
- Completed Dozer Line
- Road as Completed Line
- Access or Improved Road
- Planned Fire Line
- Power Transmission Lines
- Pipelines
- Highway or ramp
- Local or 4WD road
- Wildfire Daily Fire Perimeter
- Bureau of Land Management
- Private



108°27'W 108°26.5'W 108°26'W 108°25.5'W 108°25'W 108°24.5'W 108°24'W 108°23.5'W 108°23'W 108°22.5'W 108°22'W 108°21.5'W 108°21.01'W 108°20.5'W 108°20'W 108°19.5'W 108°19'W 108°18.5'W 108°18'W 108°17.5'W 108°17'W 108°16.5'W 108°16'W 108°15.5'W 108°15'W 108°14.5'W 108°14'W 108°13.51'W 108°13'W 108°12.5'W 108°12'W