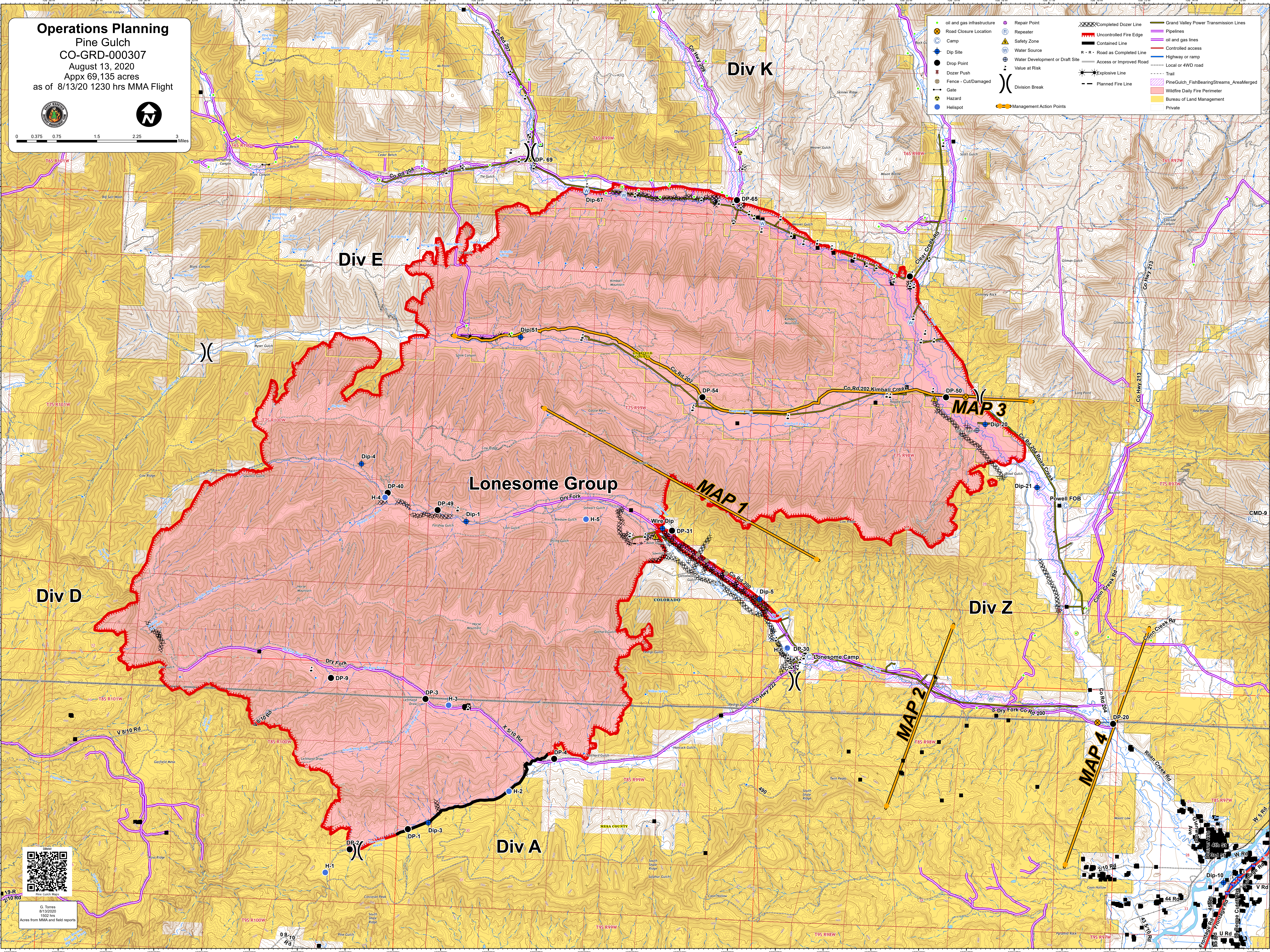


Operations Planning
 Pine Gulch
 CO-GRD-000307
 August 13, 2020
 Appx 69,135 acres
 as of 8/13/20 1230 hrs MMA Flight



0 0.375 0.75 1.5 2.25 3 Miles

oil and gas infrastructure	Repair Point	Completed Dozer Line	Grand Valley Power Transmission Lines
Road Closure Location	Repeater	Uncontained Fire Edge	Pipelines
Camp	Safety Zone	Contained Line	oil and gas lines
Dip Site	Water Source	R - R - Road as Completed Line	Controlled access
Drop Point	Water Development or Draft Site	Access or Improved Road	Highway or ramp
Dozer Push	Value at Risk	Explosive Line	Local or 4WD road
Fence - Cut/Damaged	Division Break	Planned Fire Line	Pine Gulch_FishBearingStreams_AreaMerged
Gate	Management Action Points	Trail	Wildfire Daily Fire Perimeter
Hazard		Bureau of Land Management	Private
Helispot			



G. Torres
 8/13/2020
 1502 hrs
 Acres from MMA and field reports

