

Operations Overview Map

Pine Gulch
CO-GRD-000307

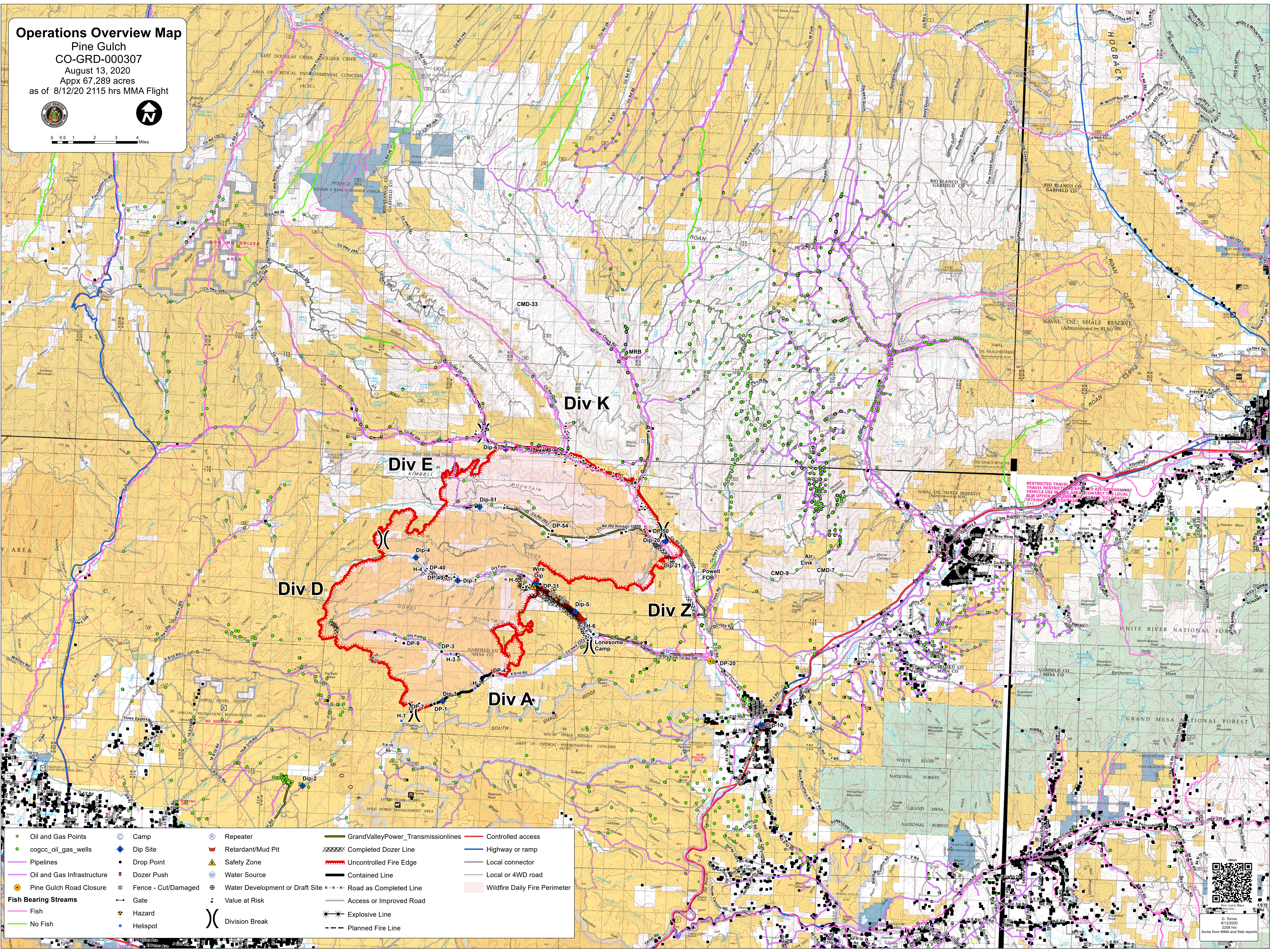
August 13, 2020

Appx 67,289 acres

as of 8/12/20 2115 hrs MMA Flight

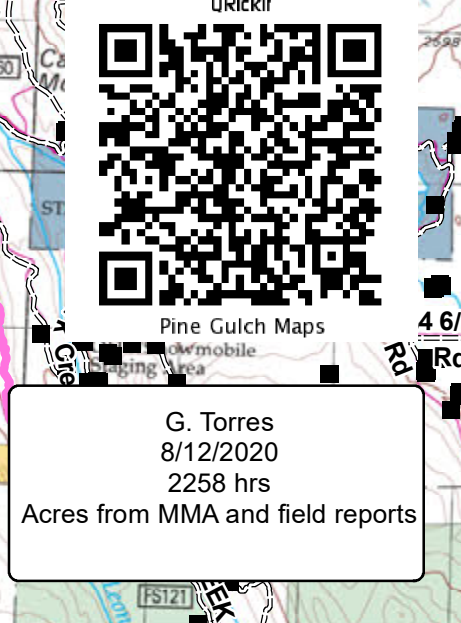


0 0.5 1 2 3 4 Miles



- | | | | | |
|-----------------------------|---------------------|---------------------------------|------------------------------------|-------------------------------|
| Oil and Gas Points | Camp | Repeater | GrandValleyPower_Transmissionlines | Controlled access |
| cogcc_oil_gas_wells | Dip Site | Retardant/Mud Pit | Completed Dozer Line | Highway or ramp |
| Pipelines | Drop Point | Safety Zone | Uncontrolled Fire Edge | Local connector |
| Oil and Gas Infrastructure | Dozer Push | Water Source | Contained Line | Local or 4WD road |
| Pine Gulch Road Closure | Fence - Cut/Damaged | Water Development or Draft Site | Road as Completed Line | Wildfire Daily Fire Perimeter |
| Fish Bearing Streams | Gate | Value at Risk | Explosive Line | |
| Fish | Hazard | Access or Improved Road | Planned Fire Line | |
| No Fish | Helispot | Division Break | | |

RESTRICTED TRAVEL
TRAVEL RESTRICTIONS APPLY TO ALL HIGHWAYS
WHICH USE THIS AREA. CONTACT THE LOCAL
BLM OFFICE FOR MORE INFORMATION.
(970)947-XXXX



G. Torres
8/12/2020
2258 hrs
Acres from MMA and field reports