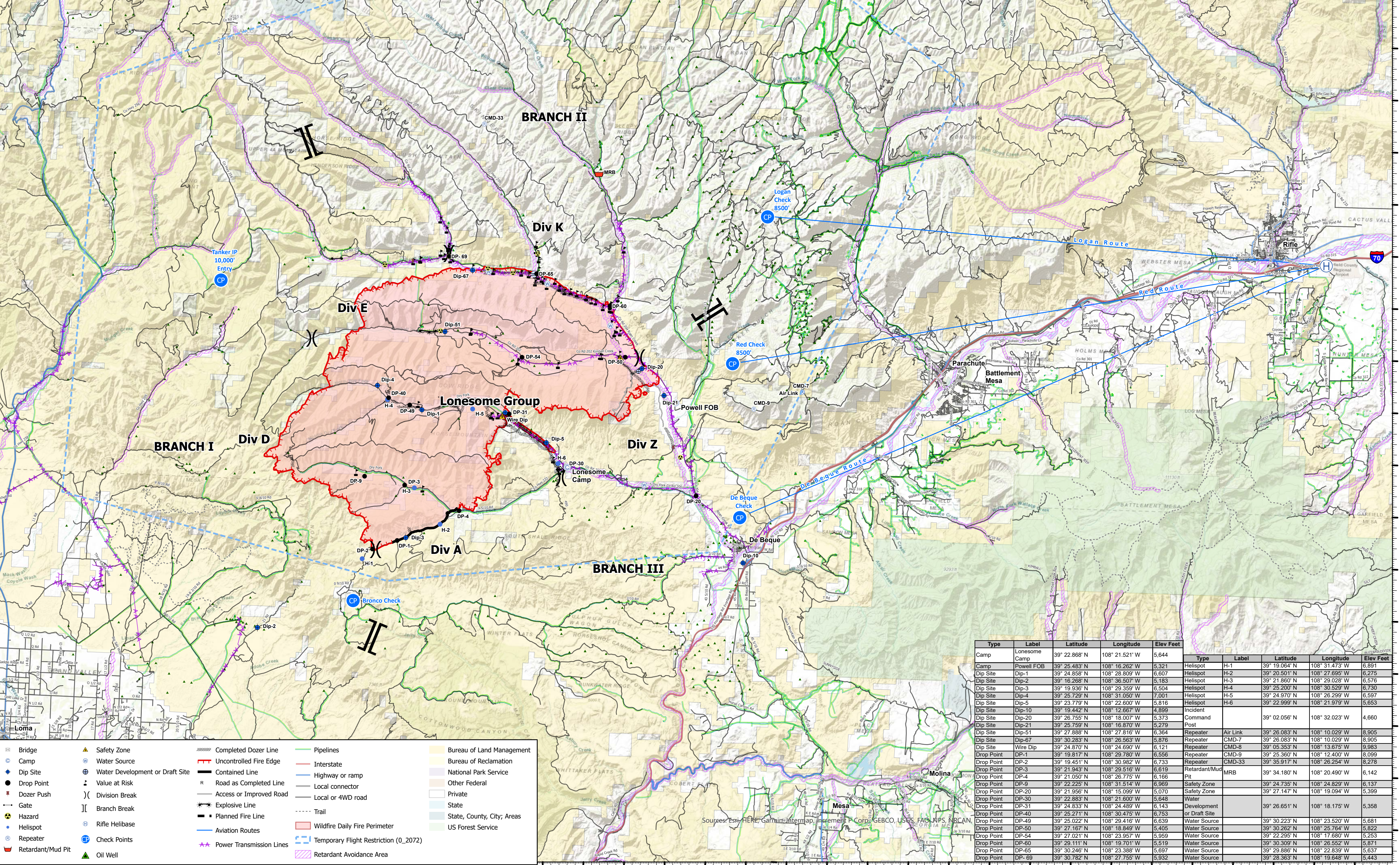


Air Ops Pilot Map
Pine Gulch
CO-GRD-000307
8/14/2020 Day
Appx 73,381 ac
at 2037 on 8/12/2020



- Bridge
- Camp
- Dip Site
- Drop Point
- Dozer Push
- Gate
- Hazard
- Helispot
- Repeater
- Retardant/Mud Pit
- Safety Zone
- Water Source
- Water Development or Draft Site
- Value at Risk
- Explosive Line
- Planned Fire Line
- Aviation Routes
- Power Transmission Lines
- Oil Well
- Completed Dozer Line
- Uncontrolled Fire Edge
- Contained Line
- Road as Completed Line
- Access or Improved Road
- Explosive Line
- Planned Fire Line
- Wildfire Daily Fire Perimeter
- Temporary Flight Restriction (Q_2072)
- Pipelines
- Interstate
- Highway or ramp
- Local connector
- Local or 4WD road
- Trail
- Wildfire Daily Fire Perimeter
- Temporary Flight Restriction (Q_2072)
- Retardant Avoidance Area
- Bureau of Land Management
- Bureau of Reclamation
- National Park Service
- Other Federal
- Private
- State
- State, County, City; Areas
- US Forest Service

Type	Label	Latitude	Longitude	Elev Feet	Type	Label	Latitude	Longitude	Elev Feet
Camp	Lonesome Camp	39° 22.868' N	108° 21.521' W	5,644	Helispot	H-1	39° 19.064' N	108° 31.473' W	6,891
Camp	Powell FOB	39° 25.483' N	108° 18.262' W	5,321	Helispot	H-2	39° 20.501' N	108° 27.695' W	6,275
Dip Site	Dip-1	39° 24.858' N	108° 28.809' W	6,607	Helispot	H-3	39° 21.860' N	108° 29.028' W	6,576
Dip Site	Dip-2	39° 18.868' N	108° 36.507' W	5,163	Helispot	H-4	39° 25.200' N	108° 30.529' W	6,730
Dip Site	Dip-3	39° 19.936' N	108° 29.359' W	6,504	Helispot	H-5	39° 24.970' N	108° 26.299' W	6,597
Dip Site	Dip-4	39° 25.729' N	108° 31.050' W	7,001	Helispot	H-6	39° 22.999' N	108° 21.979' W	5,653
Dip Site	Dip-5	39° 23.779' N	108° 22.600' W	5,816	Incident				
Dip Site	Dip-10	39° 19.442' N	108° 12.667' W	4,899	Incident				
Dip Site	Dip-20	39° 26.755' N	108° 18.007' W	5,373	Command Post		39° 02.056' N	108° 32.023' W	4,660
Dip Site	Dip-21	39° 25.759' N	108° 16.870' W	5,279					
Dip Site	Dip-51	39° 27.888' N	108° 27.816' W	6,364	Repeater	Air Link	39° 26.083' N	108° 10.029' W	8,905
Dip Site	Dip-67	39° 30.283' N	108° 26.563' W	5,876	Repeater	CMD-7	39° 26.083' N	108° 10.029' W	8,905
Dip Site	Wire Dip	39° 24.870' N	108° 24.690' W	6,121	Repeater	CMD-8	39° 05.353' N	108° 13.675' W	9,983
Drop Point	DP-1	39° 18.817' N	108° 29.780' W	6,556	Repeater	CMD-9	39° 25.360' N	108° 12.400' W	8,099
Drop Point	DP-2	39° 19.451' N	108° 30.982' W	6,733	Repeater	CMD-33	39° 35.917' N	108° 26.254' W	6,278
Drop Point	DP-3	39° 21.943' N	108° 29.516' W	6,619	Retardant/Mud Pit	MRB	39° 34.180' N	108° 20.490' W	6,142
Drop Point	DP-4	39° 21.050' N	108° 26.775' W	6,166	Safety Zone		39° 24.735' N	108° 24.829' W	6,137
Drop Point	DP-9	39° 22.225' N	108° 31.514' W	6,969	Safety Zone		39° 27.147' N	108° 19.094' W	5,399
Drop Point	DP-20	39° 21.956' N	108° 15.099' W	5,070					
Drop Point	DP-30	39° 22.883' N	108° 21.600' W	5,648					
Drop Point	DP-31	39° 24.833' N	108° 24.489' W	6,143	Development or Draft Site		39° 26.651' N	108° 18.175' W	5,358
Drop Point	DP-40	39° 25.271' N	108° 30.475' W	6,753					
Drop Point	DP-49	39° 25.022' N	108° 29.416' W	6,639	Water Source		39° 30.223' N	108° 23.520' W	5,681
Drop Point	DP-50	39° 27.167' N	108° 18.849' W	5,405	Water Source		39° 30.262' N	108° 25.764' W	5,822
Drop Point	DP-54	39° 27.021' N	108° 23.957' W	5,959	Water Source		39° 22.895' N	108° 17.680' W	5,253
Drop Point	DP-60	39° 29.111' N	108° 19.701' W	6,619	Water Source		39° 30.309' N	108° 26.552' W	6,871
Drop Point	DP-65	39° 30.246' N	108° 23.988' W	5,697	Water Source		39° 29.886' N	108° 22.839' W	5,637
Drop Point	DP-69	39° 30.782' N	108° 27.755' W	5,932	Water Source		39° 28.363' N	108° 19.648' W	5,443

108°48'W 108°46'W 108°44'W 108°42'W 108°40'W 108°38'W 108°36'W 108°34'W 108°32'W 108°30'W 108°28'W 108°26'W 108°24'W 108°22'W 108°20'W 108°18'W 108°16'W 108°14'W 108°12'W 108°10'W 108°8'W 108°6.01'W 108°4'W 108°2'W 108°W 107°58'W 107°56'W 107°54'W 107°52'W 107°50'W 107°48'W 107°46'W 107°44'W 107°42'W