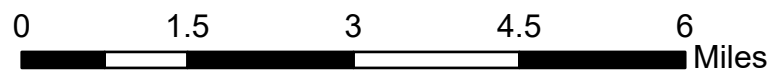


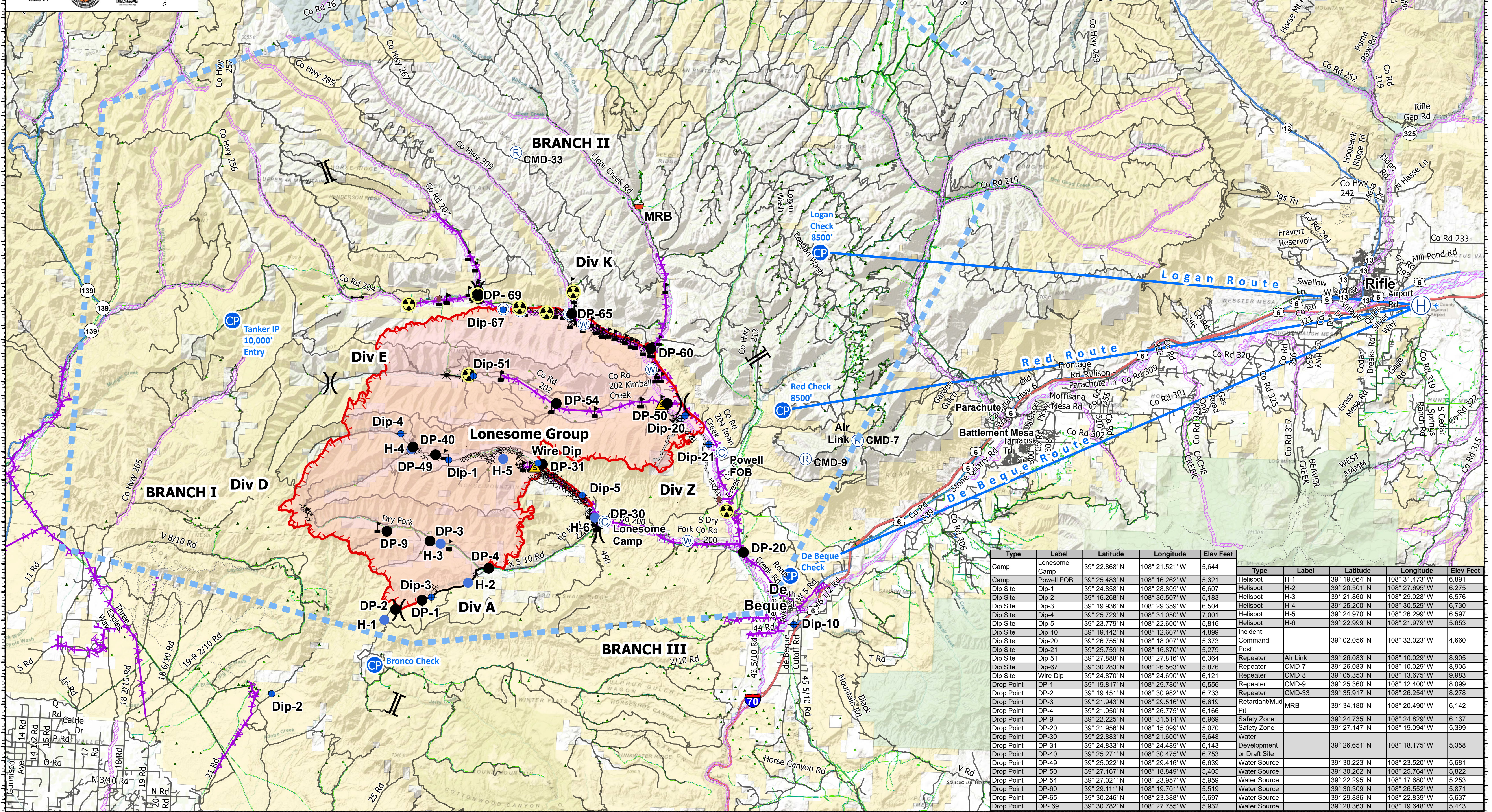
Air Ops

Pine Gulch
COGRD-000307
8/14/2020 Day

Appx 73,381 ac at
2037 on 8/13/20



Bridge	Water Development or Draft Site	Road as Completed Line	Trail
Camp	Value at Risk	Access or Improved Road	Wildfire Daily Fire Perimeter
Dip Site	Division Break	Explosive Line	Temporary Flight Restriction (0_2072)
Drop Point	Branch Break	Planned Fire Line	Retardant Avoidance Area
Dozer Push	Rifle Helibase	Aviation Routes	Bureau of Land Management
Gate	Check Points	Power Transmission Lines	Bureau of Reclamation
Hazard	Helispot	Pipelines	Other Federal
Repeater	Oil Wells	Interstate	State
Retardant/Mud Pit	Completed Dozer Line	Highway or ramp	State, County, City; Areas
Safety Zone	Uncontrolled Fire Edge	Local connector	US Forest Service
Water Source	Contained Line	Local or 4WD road	



Type	Label	Latitude	Longitude	Elev Feet
Camp	Lonesome Camp	39° 22.868' N	108° 21.521' W	5,644
Camp	Powell FOB	39° 25.483' N	108° 16.262' W	5,321
Dip Site	Dip-1	39° 24.858' N	108° 28.809' W	6,607
Dip Site	Dip-2	39° 16.268' N	108° 36.507' W	5,183
Dip Site	Dip-3	39° 19.936' N	108° 29.359' W	6,504
Dip Site	Dip-4	39° 25.729' N	108° 31.050' W	7,001
Dip Site	Dip-5	39° 23.779' N	108° 22.600' W	5,816
Dip Site	Dip-10	39° 19.442' N	108° 12.667' W	4,899
Dip Site	Dip-20	39° 26.755' N	108° 18.007' W	5,373
Dip Site	Dip-21	39° 25.759' N	108° 16.870' W	5,279
Dip Site	Dip-51	39° 27.888' N	108° 27.816' W	6,364
Dip Site	Dip-67	39° 30.283' N	108° 26.563' W	5,876
Dip Site	Wire Dip	39° 24.870' N	108° 24.690' W	6,121
Drop Point	DP-1	39° 19.817' N	108° 29.780' W	6,556
Drop Point	DP-2	39° 19.451' N	108° 30.982' W	6,733
Drop Point	DP-3	39° 21.943' N	108° 29.516' W	6,619
Drop Point	DP-4	39° 21.050' N	108° 26.775' W	6,166
Drop Point	DP-9	39° 22.225' N	108° 31.514' W	6,969
Drop Point	DP-20	39° 21.956' N	108° 15.099' W	5,070
Drop Point	DP-30	39° 22.883' N	108° 21.600' W	5,648
Drop Point	DP-31	39° 24.833' N	108° 24.489' W	6,143
Drop Point	DP-40	39° 25.271' N	108° 30.475' W	6,753
Drop Point	DP-49	39° 25.022' N	108° 29.416' W	6,639
Drop Point	DP-50	39° 27.167' N	108° 18.849' W	5,405
Drop Point	DP-54	39° 27.021' N	108° 23.957' W	5,959
Drop Point	DP-60	39° 29.111' N	108° 19.701' W	5,519
Drop Point	DP-65	39° 30.246' N	108° 23.388' W	5,697
Drop Point	DP-69	39° 30.782' N	108° 27.755' W	5,932
Helispot	H-1	39° 19.064' N	108° 31.473' W	6,891
Helispot	H-2	39° 20.501' N	108° 27.695' W	6,275
Helispot	H-3	39° 21.860' N	108° 29.028' W	6,576
Helispot	H-4	39° 25.200' N	108° 30.529' W	6,730
Helispot	H-5	39° 24.970' N	108° 26.299' W	6,597
Helispot	H-6	39° 22.999' N	108° 21.979' W	5,653
Incident				
Command Post		39° 02.056' N	108° 32.023' W	4,660
Repeater	Air Link	39° 26.083' N	108° 10.029' W	8,905
Repeater	CMD-7	39° 26.083' N	108° 10.029' W	8,905
Repeater	CMD-8	39° 05.353' N	108° 13.675' W	9,983
Repeater	CMD-9	39° 25.360' N	108° 12.400' W	8,099
Repeater	CMD-33	39° 35.917' N	108° 26.254' W	8,278
Retardant/Mud Pit	MRB	39° 34.180' N	108° 20.490' W	6,142
Safety Zone		39° 24.735' N	108° 24.829' W	6,137
Safety Zone		39° 27.147' N	108° 19.094' W	5,399
Water		39° 26.651' N	108° 18.175' W	5,358
Development or Draft Site		39° 30.223' N	108° 23.520' W	5,681
Water Source		39° 30.262' N	108° 25.764' W	5,822
Water Source		39° 22.955' N	108° 17.680' W	5,253
Water Source		39° 30.309' N	108° 26.552' W	5,871
Water Source		39° 29.886' N	108° 22.839' W	5,637
Water Source		39° 28.363' N	108° 19.648' W	5,443