



108°46'W 108°44'W 108°42'W 108°40'W 108°38'W 108°36.01'W 108°34'W 108°32'W 108°30'W 108°28'W 108°26'W 108°24'W 108°22'W 108°20'W 108°18'W 108°16'W 108°14'W 108°12'W 108°10'W 108°8'W 108°6.01'W 108°4'W 108°2'W 108°W

IAP Map
 Pine Gulch
 COGRD-000307
 08/14/2020 Day

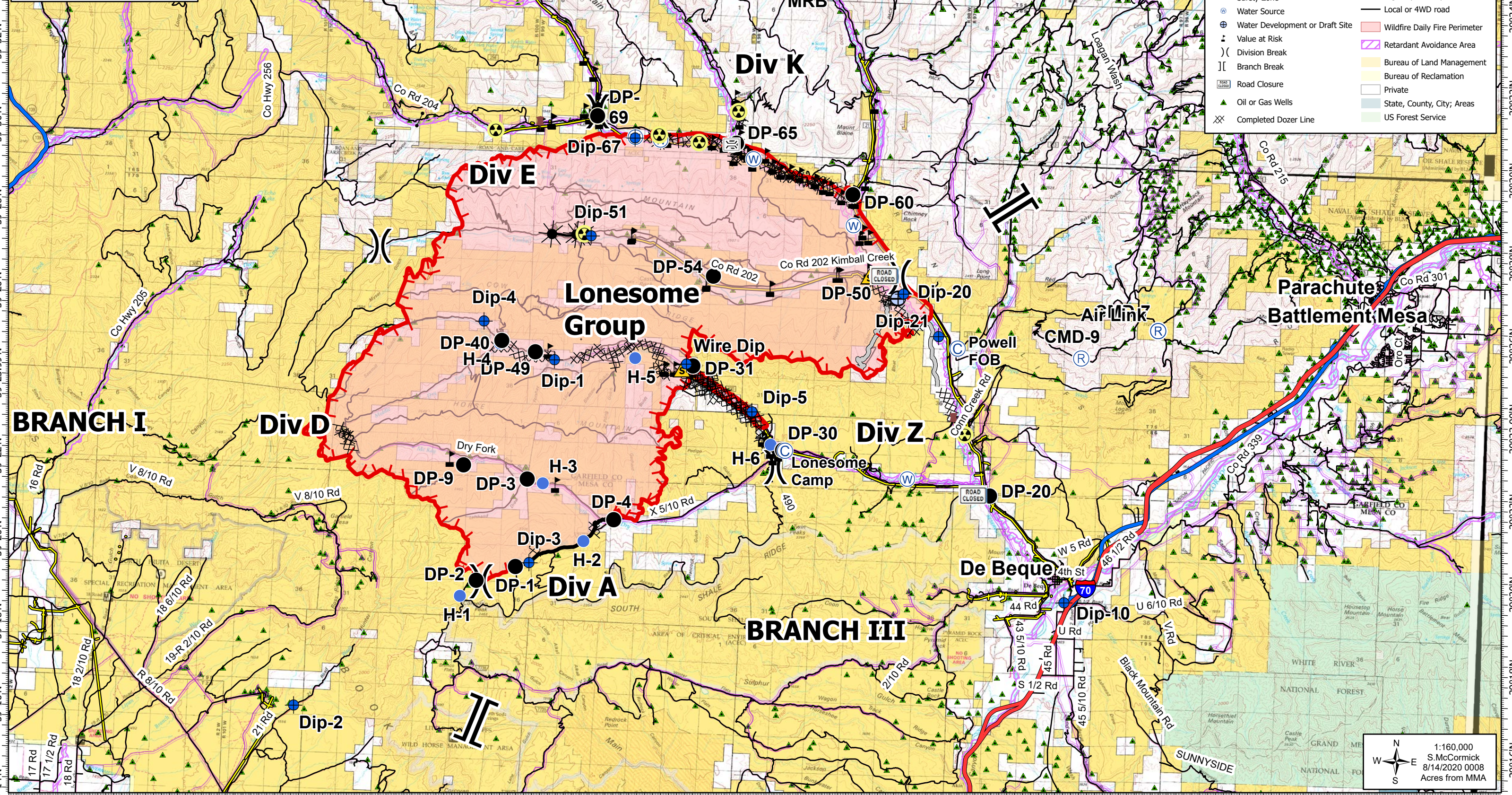


Appx 73,381 ac at 2037 on 8/13/2020




0 0.65 1.3 1.95 2.6 Miles
 North American 1983 Datum. LatLong Grid

| | | | |
|--|---------------------------------|--|-------------------------------|
| | Bridge | | Uncontrolled Fire Edge |
| | Camp | | Contained Line |
| | Dip Site | | R Road as Completed Line |
| | Drop Point | | Access or Improved Road |
| | Dozer Push | | Explosive Line |
| | Gate | | Planned Fire Line |
| | Hazard | | Oil or Gas Pipelines |
| | Helispot | | Transmission lines |
| | Repeater | | Interstate |
| | Retardant/Mud Pit | | Highway or ramp |
| | Safety Zone | | Local or 4WD road |
| | Water Source | | Wildfire Daily Fire Perimeter |
| | Water Development or Draft Site | | Retardant Avoidance Area |
| | Value at Risk | | Bureau of Land Management |
| | Division Break | | Bureau of Reclamation |
| | Branch Break | | Private |
| | Road Closure | | State, County, City; Areas |
| | Oil or Gas Wells | | US Forest Service |
| | Completed Dozer Line | | |



1:160,000
 S.McCormick
 8/14/2020 0008
 Acres from MMA



39°14'N 39°16'N 39°18'N 39°20'N 39°22'N 39°23.99'N 39°26'N 39°28'N 39°30'N 39°32'N 39°34'N 39°36'N