

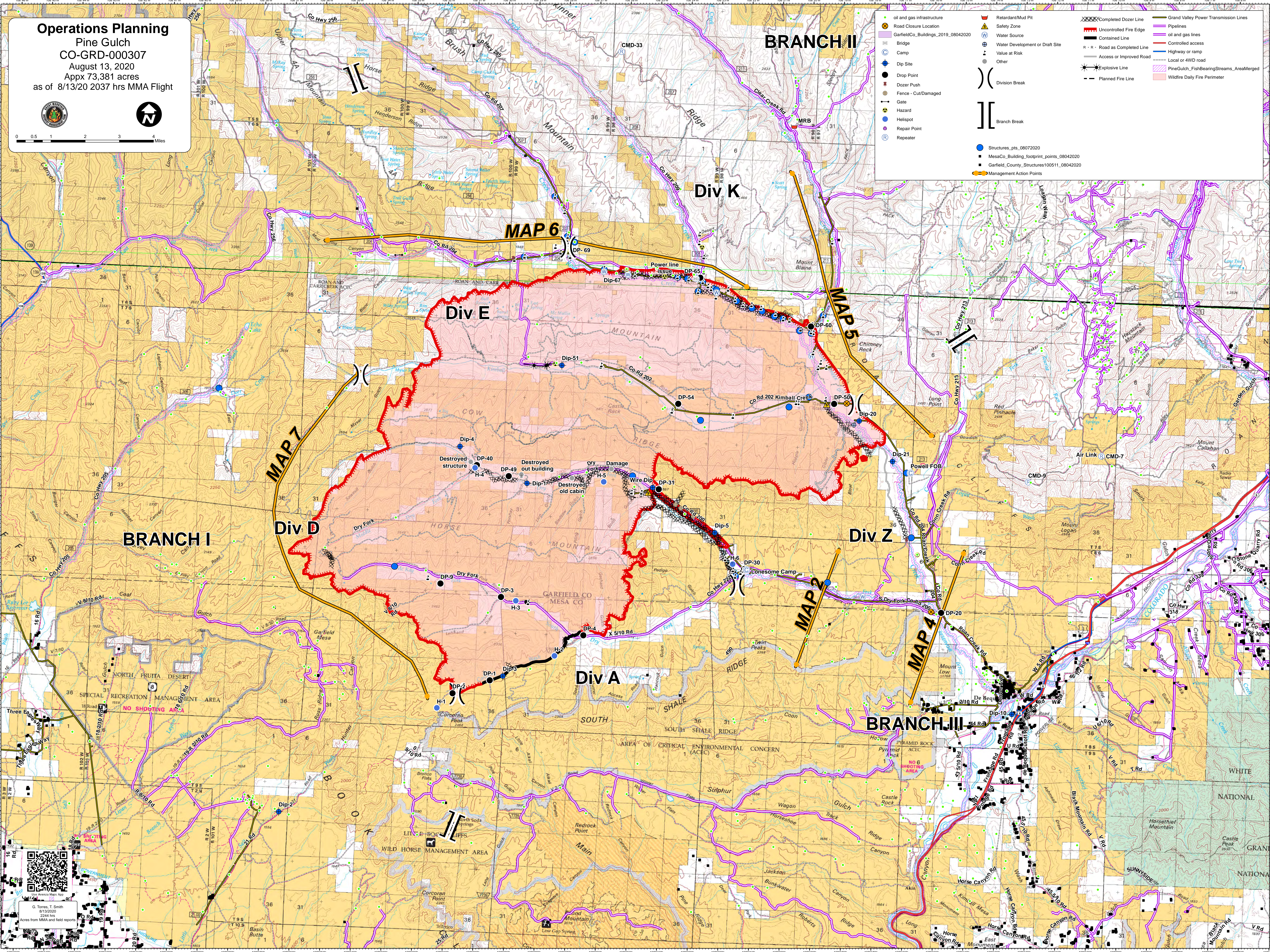
**Operations Planning**  
Pine Gulch  
CO-GRD-000307  
August 13, 2020  
Appx 73,381 acres  
as of 8/13/20 2037 hrs MMA Flight



0 0.5 1 2 3 4 Miles

- oil and gas infrastructure
- Road Closure Location
- GarfieldCo\_Buildings\_2019\_08042020
- Camp
- Dip Site
- Drop Point
- Dozer Push
- Fence - Cut/Damaged
- Gate
- Hazard
- Hellspot
- Repair Point
- Repeater
- Retardant/Mud Pit
- Safety Zone
- Water Source
- Water Development or Draft Site
- Value at Risk
- Other
- Division Break
- Branch Break
- Completed Dozer Line
- Uncontrolled Fire Edge
- Controlled Line
- R - R Road as Completed Line
- Access or Improved Road
- Explosive Line
- Planned Fire Line
- Grand Valley Power Transmission Lines
- Pipelines
- oil and gas lines
- Controlled access
- Highway or ramp
- Local or 4WD road
- PineGulch\_FishBearingStreams\_AreaMerged
- Wildfire Daily Fire Perimeter

- Structures\_pts\_08072020
- MesaCo\_Building\_footprint\_points\_08042020
- Garfield\_County\_Structures100511\_08042020
- Management Action Points



G. Torres, T. Smith  
81322020  
2244 hrs  
Acres from MMA and field reports