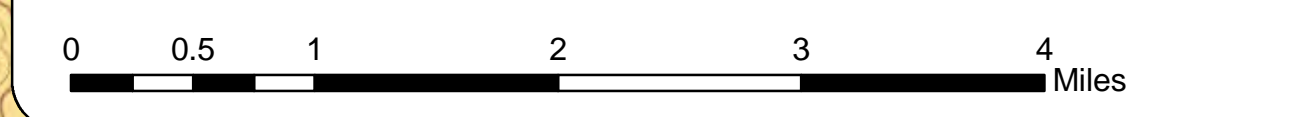
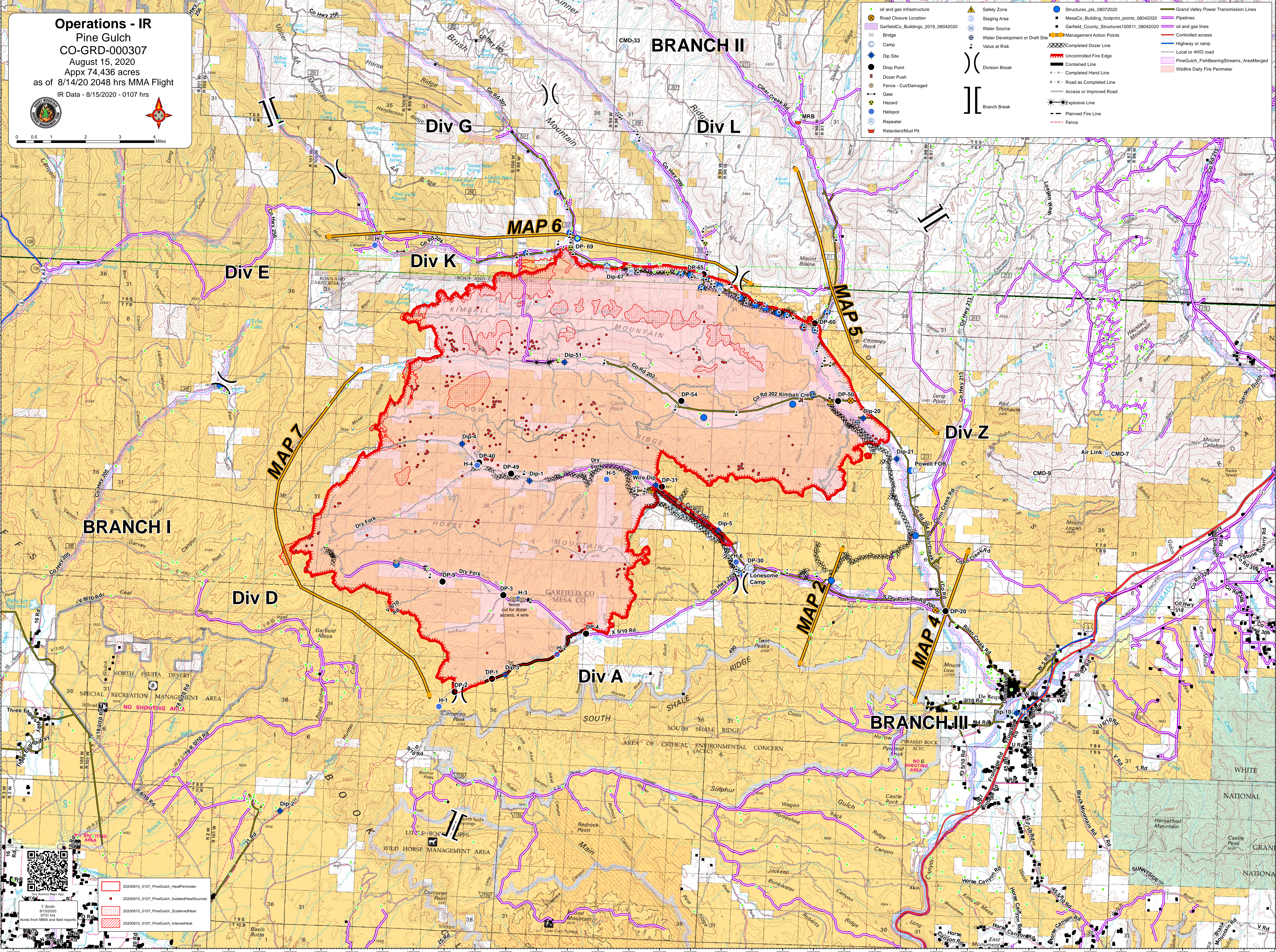


**Operations - IR**  
**Pine Gulch**  
**CO-GRD-000307**  
 August 15, 2020  
 Appx 74,436 acres  
 as of 8/14/20 2048 hrs MMA Flight  
 IR Data - 8/15/2020 - 0107 hrs



● oil and gas infrastructure	▲ Safety Zone	● Structures_pts_08072020	— Grand Valley Power Transmission Lines
■ Road Closure Location	○ Staging Area	■ MesaCo_Building_footprint_points_08042020	— Pipelines
■ GarfieldCo_Buildings_2019_08042020	○ Water Source	■ Garfield_County_Structures100511_08042020	— oil and gas lines
○ Bridge	○ Water Development or Draft Site	○ Management Action Points	— Controlled access
○ Camp	○ Value at Risk	○ Completed Dozer Line	— Highway or ramp
○ Dip Site	○ Division Break	○ Uncontrolled Fire Edge	— Local or 4WD road
● Drop Point	○ Branch Break	○ Contained Line	— PineGulch_FishBearingStreams_AreaMerged
○ Dozer Push		○ Completed Hand Line	— Wildfire Daily Fire Perimeter
○ Fence - Cut/Damaged		○ Road as Completed Line	
○ Gate		○ Access or Improved Road	
○ Hazard		○ Explosive Line	
○ Helispot		○ Planned Fire Line	
○ Repeater		○ Fence	
○ Retardant/Mud Pit			



○ 20200815_0107_PineGulch_HeatPerimeter
● 20200815_0107_PineGulch_IsolatedHeatSources
■ 20200815_0107_PineGulch_ScatteredHeat
■ 20200815_0107_PineGulch_IntenseHeat

Acres from MMA and field reports

T. Smith  
 8/16/2020  
 0731 hrs