

Operations Overview

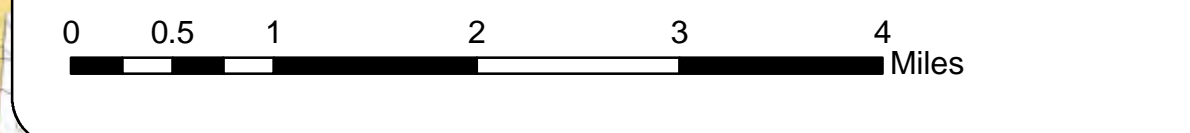
Pine Gulch

CO-GRD-000307

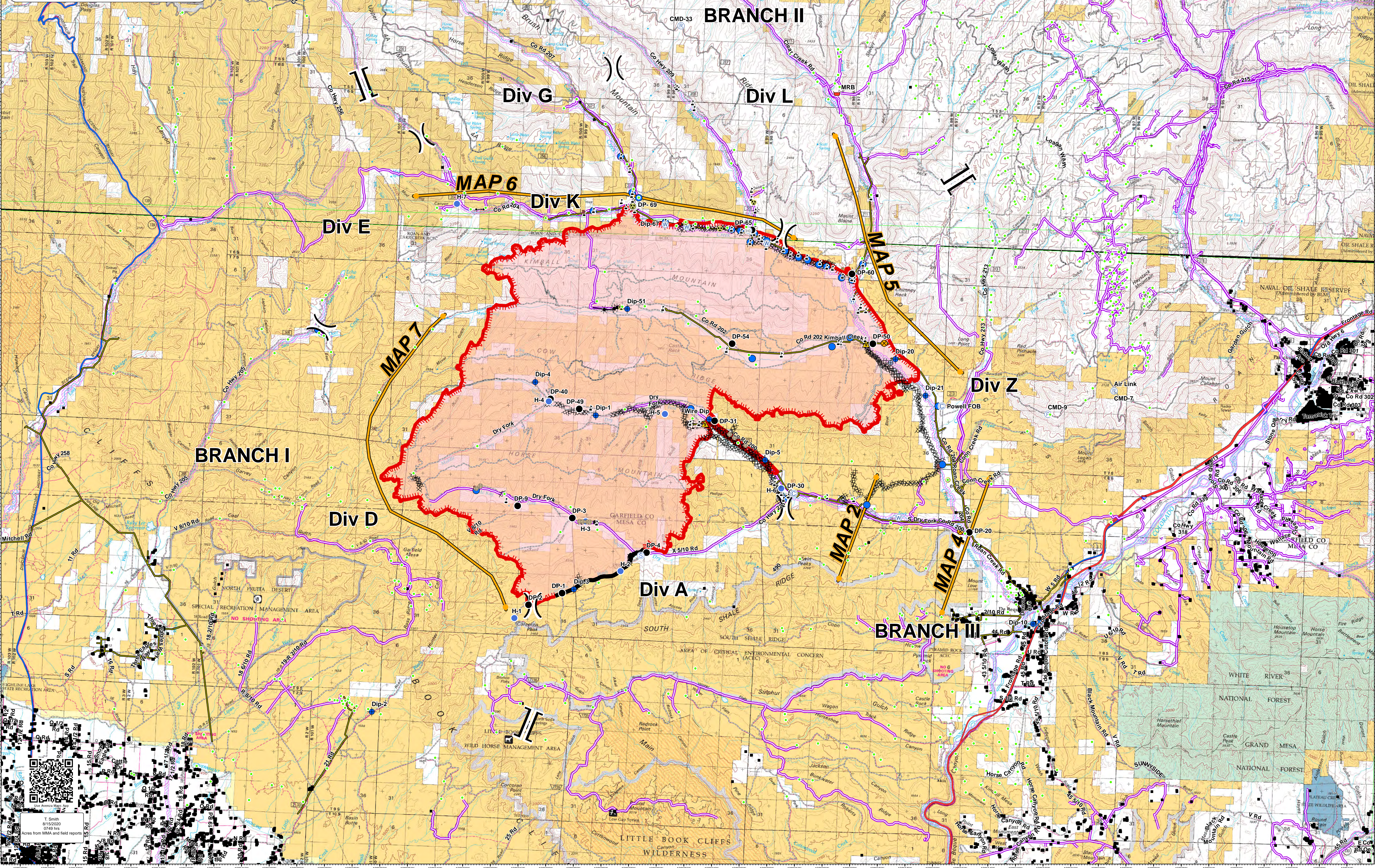
August 15, 2020

Appx 74,436 acres

as of 8/14/20 2048 hrs MMA Flight



Oil and gas infrastructure	Safety Zone	Structures_pts_08072020	Grand Valley Power Transmission Lines
Road Closure Location	Staging Area	MesaCo_Building_footprint_points_08042020	Pipelines
GarfieldCo_Buildings_2019_08042020	Water Source	GarfieldCounty_Structures100511_08042020	Oil and gas lines
Bridge	Water Development or Draft Site	Management Action Points	Controlled access
Camp	Value at Risk	Completed Dozer Line	Highway or ramp
Dip Site	Division Break	Uncontrolled Fire Edge	Local connector
Drop Point	Branch Break	Contained Line	Local or 4WD road
Dozer Push	Explosive Line	R - R - Road as Completed Line	PineGulch_FishBearingStreams_AreaMerged
Fence - Cut/Damaged	Planned Fire Line	Access or Improved Road	Wildfire Daily Fire Perimeter
Gate	Retardant/Mud Pit		
Hazard			
Helispot			
Repeater			



T. Smith
8/16/2020
0749 hrs
Acres from MMA and field reports