

PINE GULCH CO-GRD-000307

Air Ops Map 8/16/20

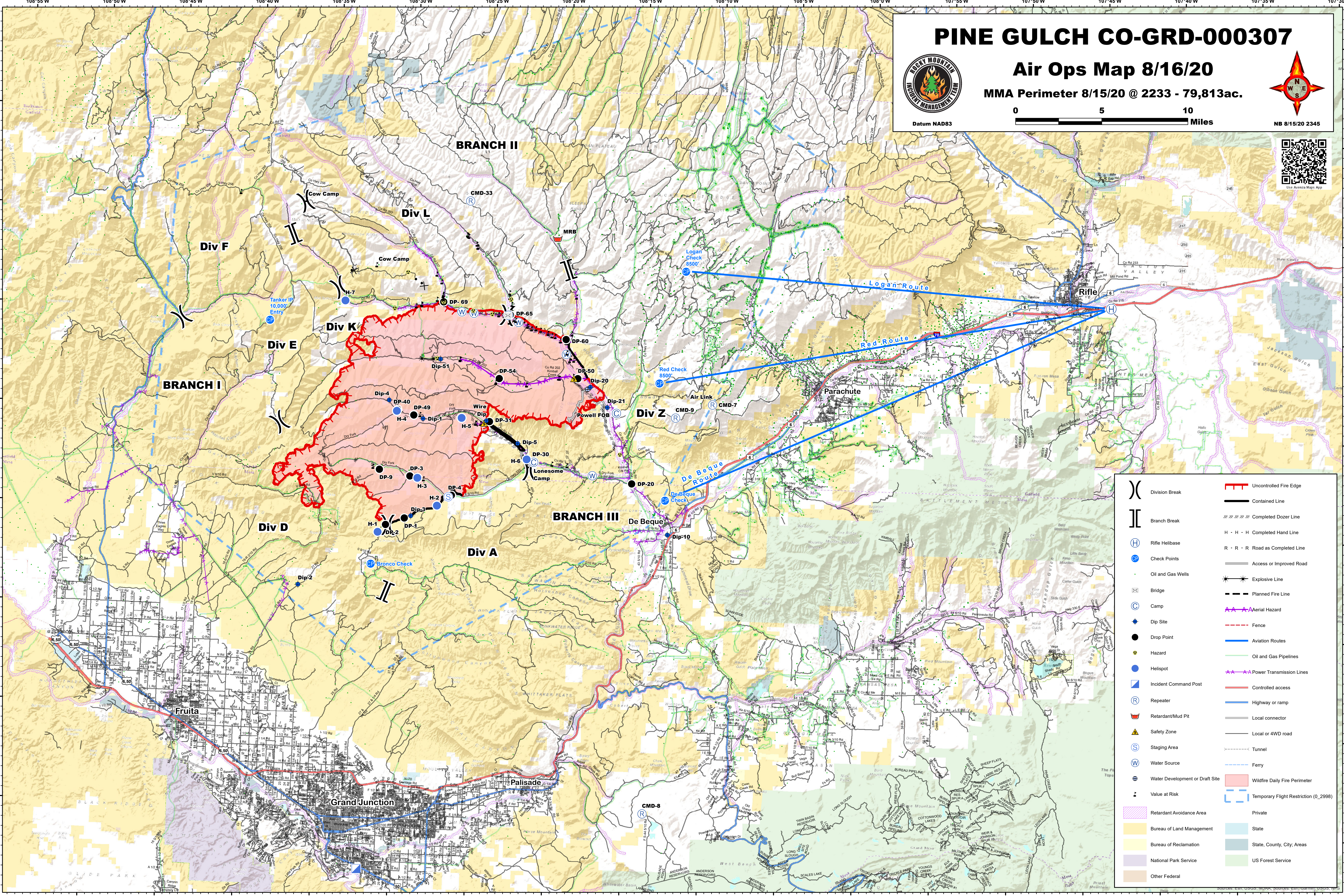
MMA Perimeter 8/15/20 @ 2233 - 79,813ac.



Datum NAD83



NB 8/15/20 2345



	Division Break		Uncontrolled Fire Edge
	Branch Break		Contained Line
	Rifle Helibase		Completed Dozer Line
	Check Points		Completed Hand Line
	Oil and Gas Wells		Road as Completed Line
	Bridge		Access or Improved Road
	Camp		Explosive Line
	Dip Site		Planned Fire Line
	Drop Point		Aerial Hazard
	Hazard		Fence
	Helispot		Aviation Routes
	Incident Command Post		Oil and Gas Pipelines
	Repeater		Power Transmission Lines
	Retardant/Mud Pit		Controlled access
	Safety Zone		Highway or ramp
	Staging Area		Local connector
	Water Source		Local or 4WD road
	Water Development or Draft Site		Tunnel
	Value at Risk		Ferry
	Retardant Avoidance Area		Wildfire Daily Fire Perimeter
	Bureau of Land Management		Temporary Flight Restriction (0_2998)
	Bureau of Reclamation		Private
	National Park Service		State
	Other Federal		State, County, City, Areas
			US Forest Service