

# Operations Overview

Pine Gulch

CO-GRD-000307

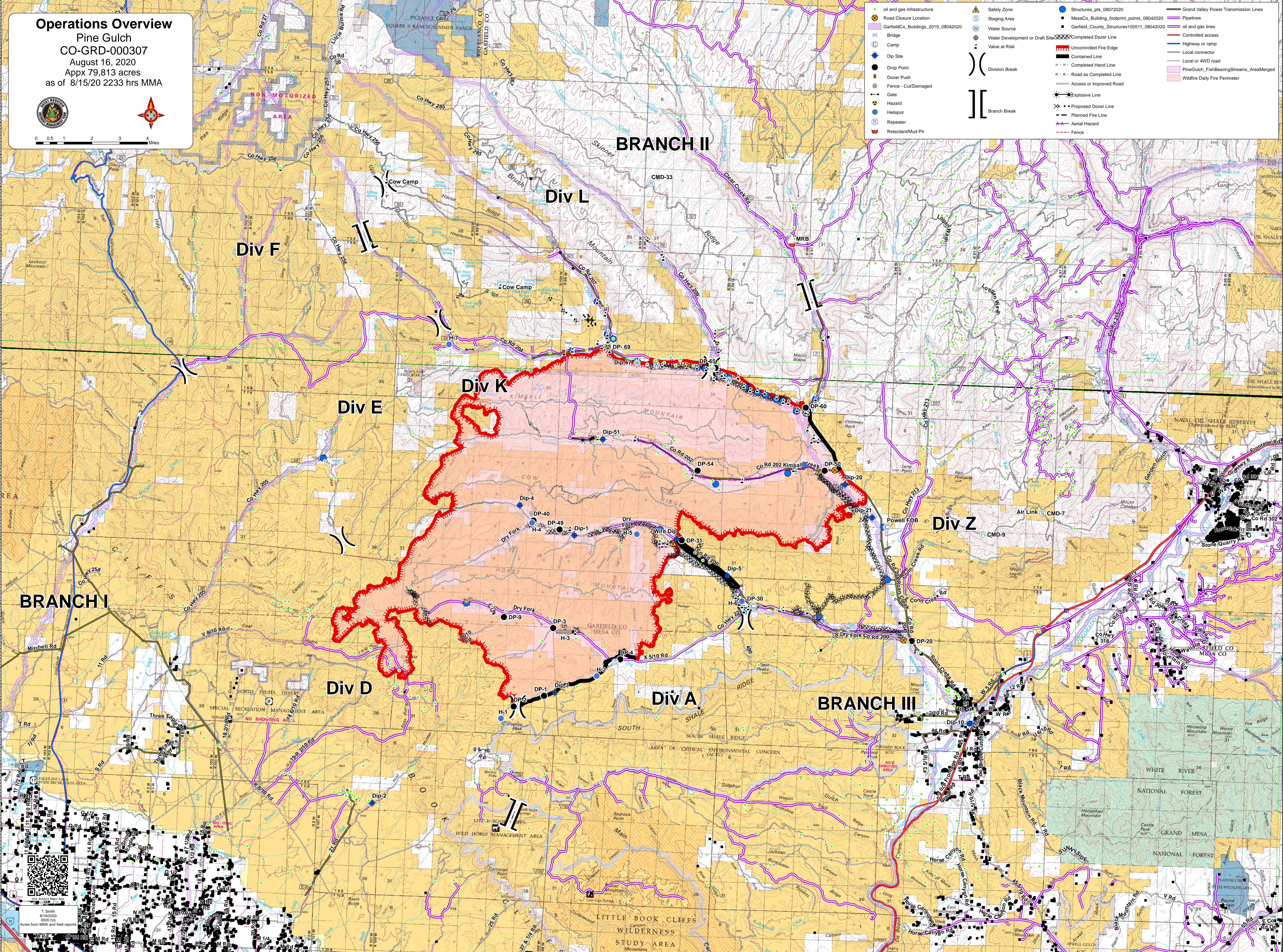
August 16, 2020

Appx 79,813 acres  
as of 8/15/20 2233 hrs MMA



0 0.5 1 2 3 4 Miles

<ul style="list-style-type: none"><li>oil and gas infrastructure</li><li>Road Closure Location</li><li>GarfieldCo_Buildings_2019_08042020</li><li>Bridge</li><li>Camp</li><li>Dip Site</li><li>Drop Point</li><li>Dozer Push</li><li>Fence - Cut/Damaged</li><li>Gate</li><li>Hazard</li><li>Hellspot</li><li>Repeater</li><li>Retardant/Mud Pit</li></ul>	<ul style="list-style-type: none"><li>Safety Zone</li><li>Staging Area</li><li>Water Source</li><li>Water Development or Draft Site</li><li>Value at Risk</li><li>Division Break</li><li>Branch Break</li></ul>	<ul style="list-style-type: none"><li>Structures_pts_08072020</li><li>MesaCo_Building_footprint_points_08042020</li><li>Garfield_County_Structures100511_08042020</li><li>Completed Dozer Line</li><li>Uncontrolled Fire Edge</li><li>Contained Line</li><li>H - H - Completed Hand Line</li><li>R - R - Road as Completed Line</li><li>Access or Improved Road</li><li>Explosive Line</li><li>Proposed Dozer Line</li><li>Planned Fire Line</li><li>Aerial Hazard</li><li>Fence</li></ul>	<ul style="list-style-type: none"><li>Grand Valley Power Transmission Lines</li><li>Pipelines</li><li>oil and gas lines</li><li>Controlled access</li><li>Highway or ramp</li><li>Local connector</li><li>Local or 4WD road</li><li>PineGulch_FishBearingStreams_AreaMerged</li><li>Wildfire Daily Fire Perimeter</li></ul>
--	---	--	---



T. Smith  
8/16/2020  
0020 hrs  
Acres from MMA and field reports