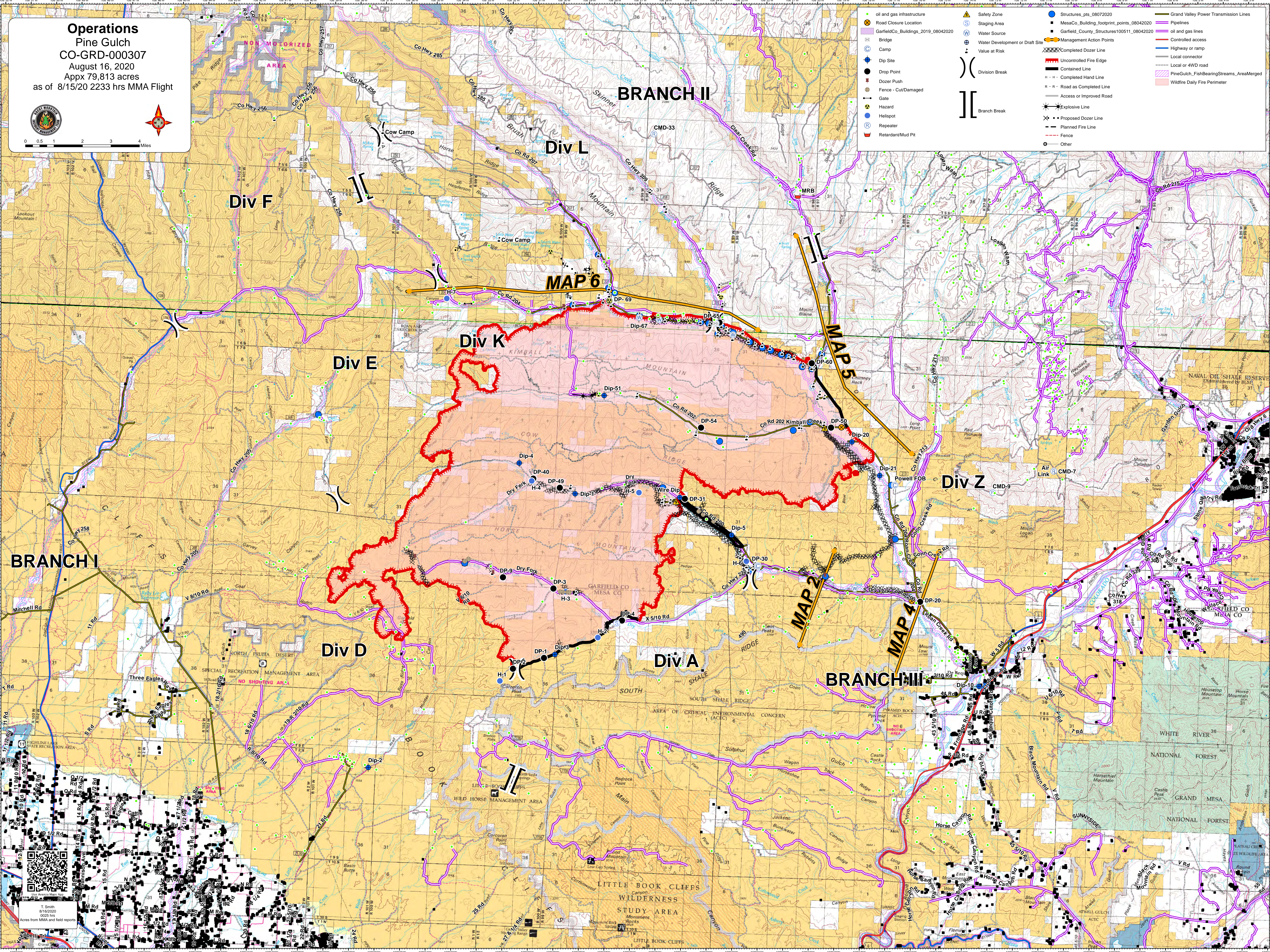


Operations
Pine Gulch
CO-GRD-000307
 Appx 79,813 acres
 as of 8/15/20 2233 hrs MMA Flight



0 0.5 1 2 3 4 Miles

● oil and gas infrastructure	▲ Safety Zone	● Structures_pts_08072020	— Grand Valley Power Transmission Lines
⊗ Road Closure Location	⊙ Staging Area	■ MesaCo_Building_footprint_points_08042020	— Pipelines
■ GarfieldCo_Buildings_2019_08042020	⊕ Water Source	■ GarfieldCo_Structures100511_08042020	— oil and gas lines
⊕ Bridge	⊕ Water Development or Draft Site	● Management Action Points	— Controlled access
⊕ Camp	⊕ Value at Risk	— Completed Dozer Line	— Highway or ramp
⊕ Dip Site	⊕ Division Break	— Uncontrolled Fire Edge	— Local connector
● Drop Point	⊕ Branch Break	— Contained Line	— Local or 4WD road
⊕ Dozer Push	— Access or Improved Road	— Uncontrolled Hand Line	— PineGulch_FishBearingStreams_AreaMerged
⊕ Fence - Cut/Damaged	— Explosive Line	— R - R - Road as Completed Line	— Wildfire Daily Fire Perimeter
⊕ Gate	⊕ Helispot	— Planned Fire Line	
⊕ Hazard	⊕ Repeater	— Fence	
⊕ Retardant/Mud Pit	⊕ Other		



T. Smith
 8/16/2020
 0025 hrs
 Acres from MMA and field reports