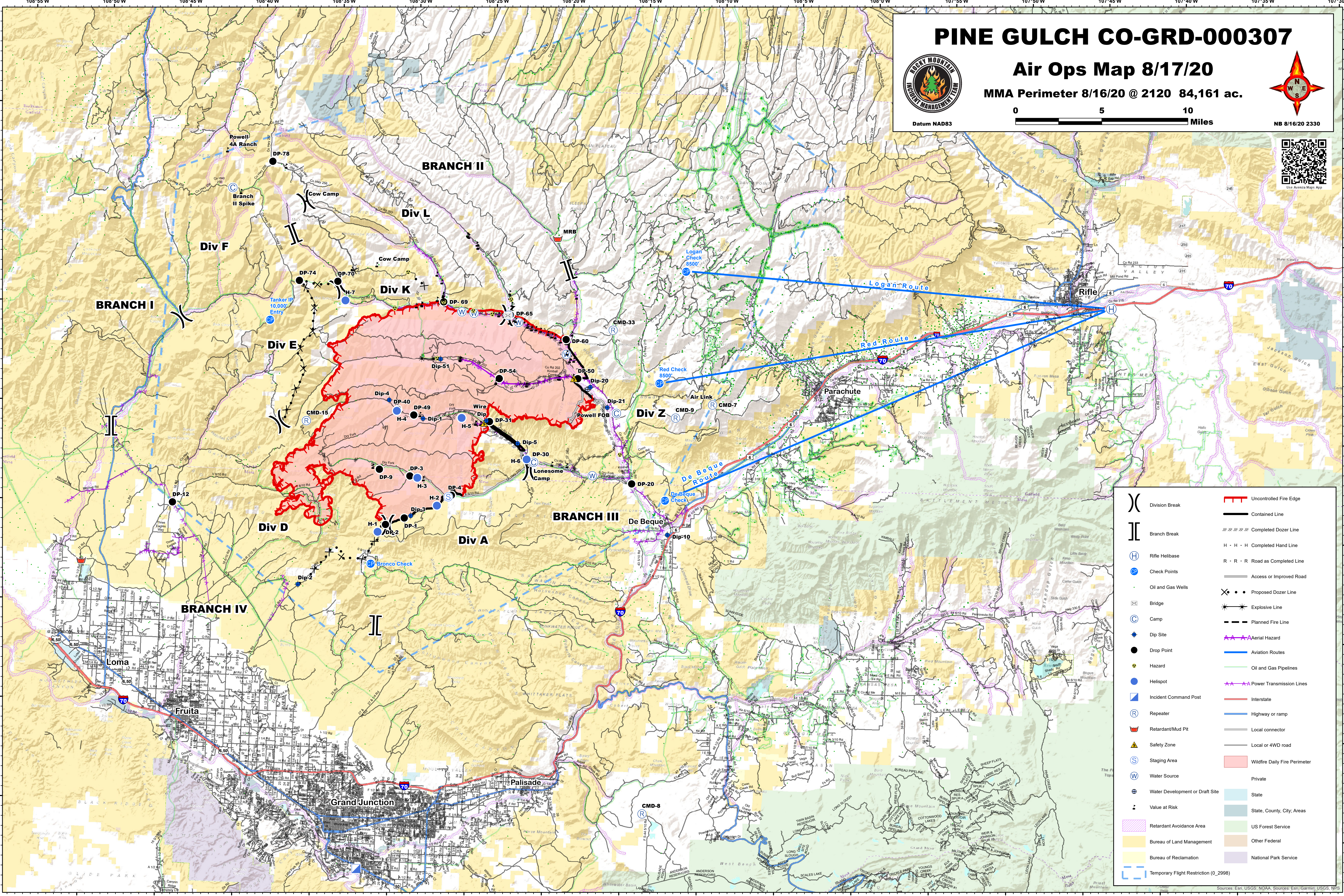
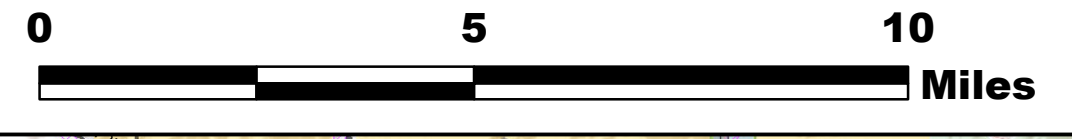
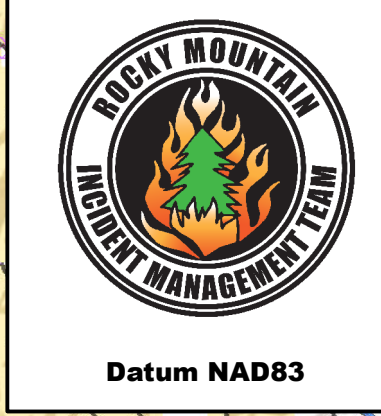


PINE GULCH CO-GRD-000307

Air Ops Map 8/17/20

MMA Perimeter 8/16/20 @ 2120 84,161 ac.



()	Division Break	—	Uncontrolled Fire Edge
[]	Branch Break	—	Contained Line
(H)	Rifle Helibase	— x x x x	Completed Dozer Line
(CP)	Check Points	H · H · H	Completed Hand Line
(O&G)	Oil and Gas Wells	R · R · R	Road as Completed Line
(B)	Bridge	—	Access or Improved Road
(C)	Camp	— x · x · x	Proposed Dozer Line
(Dip)	Dip Site	— x — x —	Explosive Line
(Hazard)	Hazard	— - - -	Planned Fire Line
(ICP)	Incident Command Post	— x — x —	Aerial Hazard
(R)	Repeater	—	Aviation Routes
(Retardant)	Retardant/Mud Pit	—	Oil and Gas Pipelines
(Safety)	Safety Zone	—	Power Transmission Lines
(S)	Staging Area	—	Interstate
(W)	Water Source	—	Highway or ramp
(WD)	Water Development or Draft Site	—	Local connector
(V)	Value at Risk	—	Local or 4WD road
(RA)	Retardant Avoidance Area	—	Wildfire Daily Fire Perimeter
(BLM)	Bureau of Land Management	—	Private
(BRe)	Bureau of Reclamation	—	State
(TFR)	Temporary Flight Restriction (0_2998)	—	State, County, City, Areas
		—	US Forest Service
		—	Other Federal
		—	National Park Service

Sources: Esri, USGS, NOAA, Sources: Esri, Garmin, USGS, NPS