



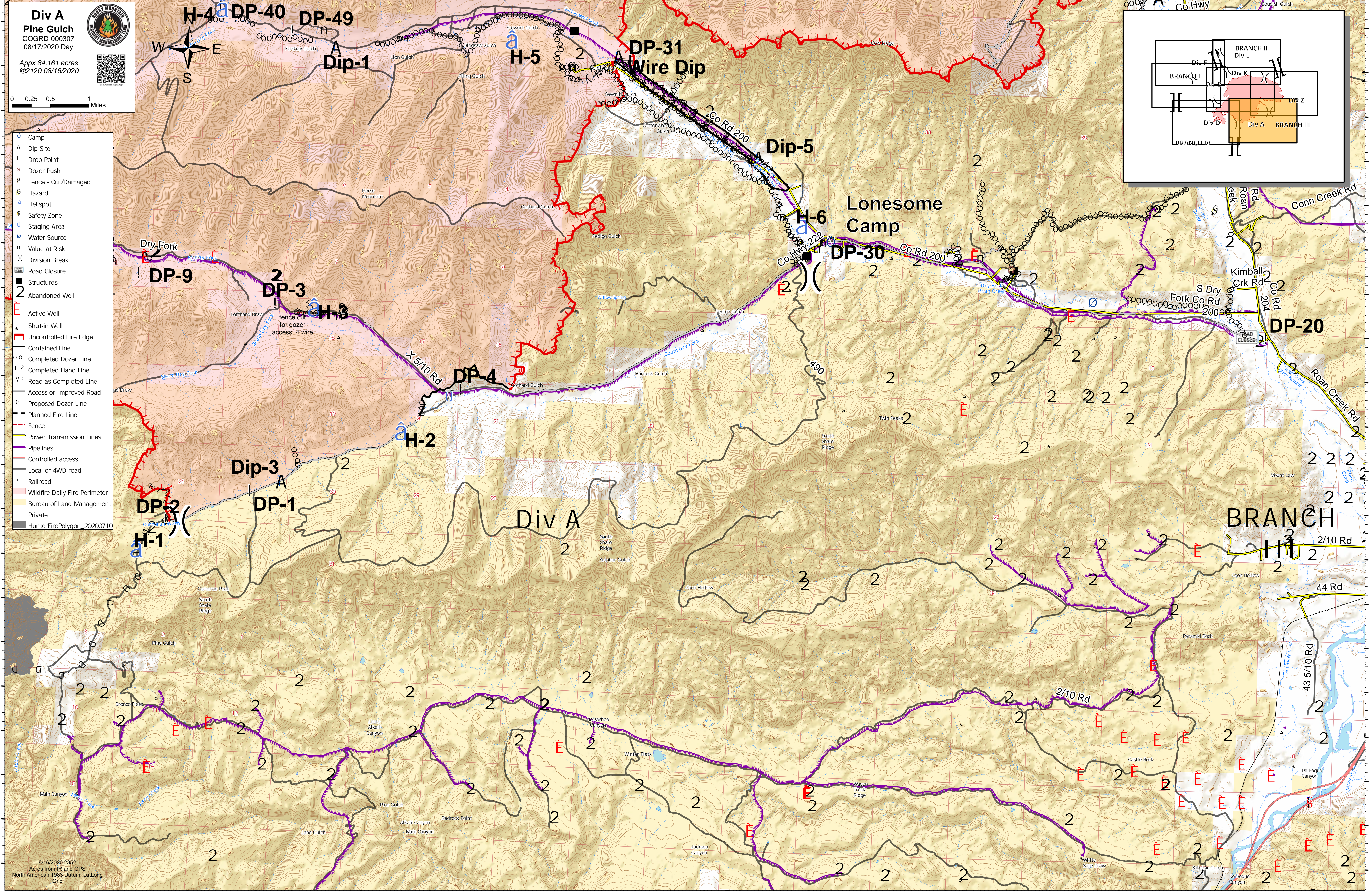
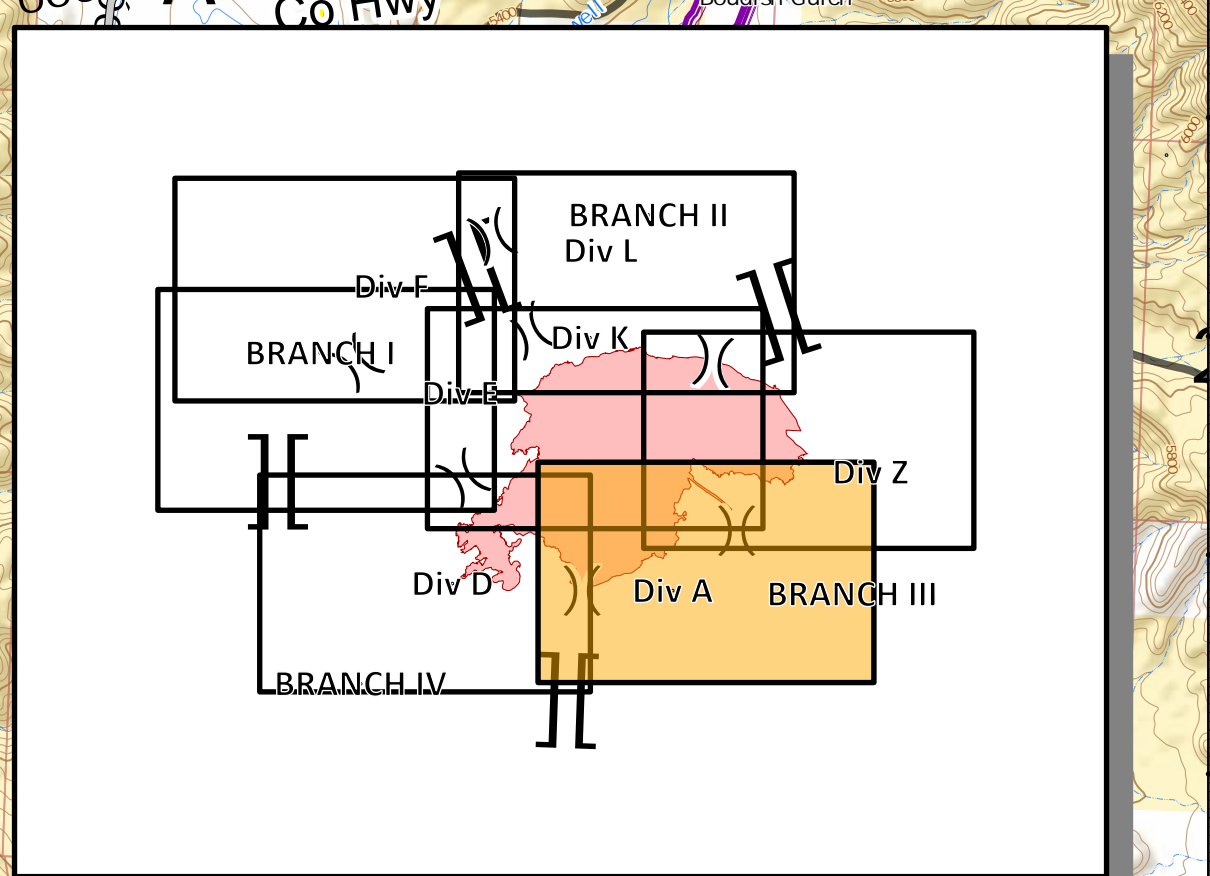
108° 33.5'W 108° 32.5'W 108° 31.5'W 108° 30.5'W 108° 29.5'W 108° 28.5'W 108° 27.5'W 108° 26.5'W 108° 25.5'W 108° 24.5'W 108° 23.5'W 108° 22.5'W 108° 21.5'W 108° 20.5'W 108° 19.5'W 108° 18.5'W 108° 17.5'W 108° 16.5'W 108° 15.5'W 108° 14.5'W

Div A
Pine Gulch
 COGRD-000307
 08/17/2020 Day
 Appx 84,161 acres
 @2120 08/16/2020

0 0.25 0.5 1 Miles

- o Camp
- A Dip Site
- I Drop Point
- a Dozer Push
- @ Fence - Cut/Damaged
- G Hazard
- h Helispot
- \$ Safety Zone
- u Staging Area
- u Water Source
- n Value at Risk
- (X) Division Break
- Road Closure
- Structures
- Abandoned Well
- Active Well
- Shut-in Well
- Uncontrolled Fire Edge
- Contained Line
- o Completed Dozer Line
- o Completed Hand Line
- o Road as Completed Line
- Access or Improved Road
- Proposed Dozer Line
- Planned Fire Line
- Fence
- Power Transmission Lines
- Pipelines
- Controlled access
- Local or 4WD road
- Railroad
- Wildfire Daily Fire Perimeter
- Bureau of Land Management
- Private
- HunterFirePolygon_20200710



108° 33'W 108° 32'W 108° 31'W 108° 30'W 108° 29'W 108° 28'W 108° 27'W 108° 26'W 108° 25'W 108° 24'W 108° 23'W 108° 22'W 108° 21.0'W 108° 20'W 108° 19'W 108° 18'W 108° 17'W 108° 16'W 108° 15'W 108° 14'W

8/16/2020 2352
Acres from IR and GPS
North American 1983 Datum: Lat/Long
Grid