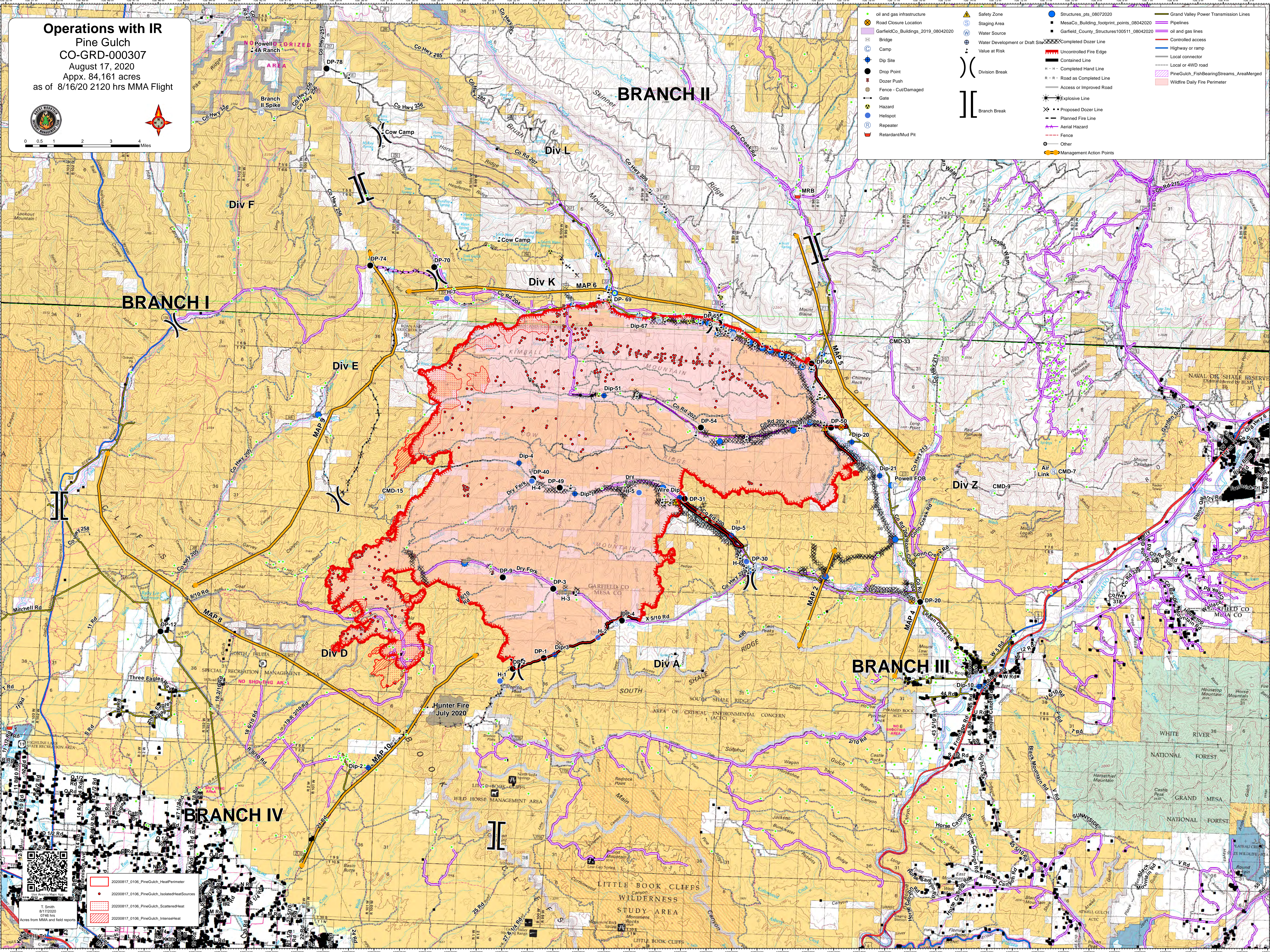


Operations with IR
Pine Gulch
CO-GRD-000307
 August 17, 2020
 Appx. 84,161 acres
 as of 8/16/20 2120 hrs MMA Flight



0 0.5 1 2 3 4 Miles

● oil and gas infrastructure	▲ Safety Zone	● Structures_pts_08072020	— Grand Valley Power Transmission Lines
● Road Closure Location	○ Staging Area	■ MesaCo_Building_footprint_points_08042020	— Pipelines
■ GarfieldCo_Buildings_2019_08042020	○ Water Source	■ Garfield_County_Structures100511_08042020	— oil and gas lines
○ Bridge	○ Water Development or Draft Site	○ Completed Dozer Line	— Controlled access
○ Camp	○ Value at Risk	○ Uncontrolled Fire Edge	— Highway or ramp
○ Dip Site	○ Division Break	○ Contained Line	— Local connector
○ Drop Point	○ Branch Break	○ Road as Completed Line	— Local or 4WD road
○ Dozer Push	○ Explosive Line	○ Proposed Dozer Line	— PineGulch_FishBearingStreams_AreaMerged
○ Fence - Cut/Damaged	○ Heislop	○ Planned Fire Line	— Wildfire Daily Fire Perimeter
○ Gate	○ Repeater	○ Aerial Hazard	
○ Hazard	○ Retardant/Mud Pit	○ Fence	
○ Other		○ Other	
○ Management Action Points		○ Management Action Points	



20200817_0106_PineGulch_HeatPerimeter

20200817_0106_PineGulch_IsolatedHeatSources

20200817_0106_PineGulch_ScatteredHeat

20200817_0106_PineGulch_IntenseHeat

T. Smith
 8/17/2020
 0746 hrs

Acres from MMA and field reports