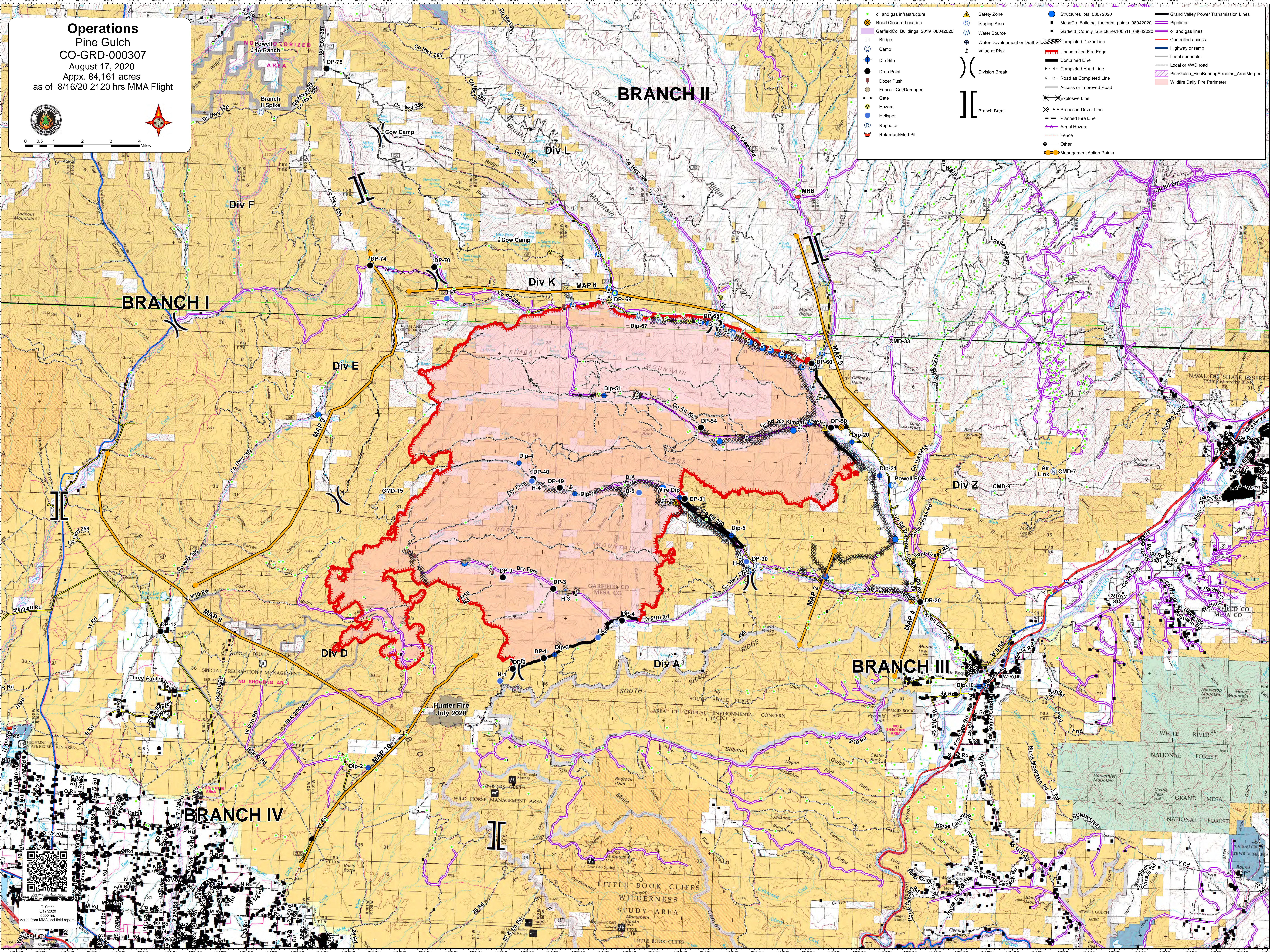


Operations
Pine Gulch
CO-GRD-000307
 August 17, 2020
 Appx. 84,161 acres
 as of 8/16/20 2120 hrs MMA Flight



0 0.5 1 2 3 4 Miles

- | | | | |
|--------------------------------------|-----------------------------------|---|---|
| ● oil and gas infrastructure | ▲ Safety Zone | ● Structures_pts_08072020 | — Grand Valley Power Transmission Lines |
| ⊗ Road Closure Location | ⊙ Staging Area | ■ MesaCo_Building_footprint_points_08042020 | — Pipelines |
| ■ GarfieldCo_Buildings_2019_08042020 | ⊕ Water Source | ■ GarfieldCounty_Structures100511_08042020 | — oil and gas lines |
| ⊖ Bridge | ⊖ Water Development or Draft Site | ⊗ Completed Dozer Line | — Controlled access |
| ⊙ Camp | ⊖ Value at Risk | ⊗ Uncontrolled Fire Edge | — Highway or ramp |
| ⊙ Dip Site | ⊖ Division Break | ⊗ Contained Line | — Local connector |
| ● Drop Point | ⊖ Branch Break | ⊗ R - R - Completed Hand Line | — Local or 4WD road |
| ⊙ Dozer Push | ⊖ | ⊗ R - R - Road as Completed Line | — PineGulch_FishBearingStreams_AreaMerged |
| ⊙ Fence - Cut/Damaged | ⊖ | ⊗ Planned Fire Line | — Wildfire Daily Fire Perimeter |
| ⊙ Gate | ⊖ | ⊗ Aerial Hazard | |
| ⊙ Hazard | ⊖ | ⊗ Fence | |
| ⊙ Helispot | ⊖ | ⊗ Retardant/Mud Pit | |
| ⊙ Repeater | | ⊗ Explosive Line | |
| ⊙ Other | | ⊗ Proposed Dozer Line | |
| ⊙ Management Action Points | | ⊗ Other | |



T. Smith
 8/17/2020
 0000 hrs
 Acres from MMA and field reports