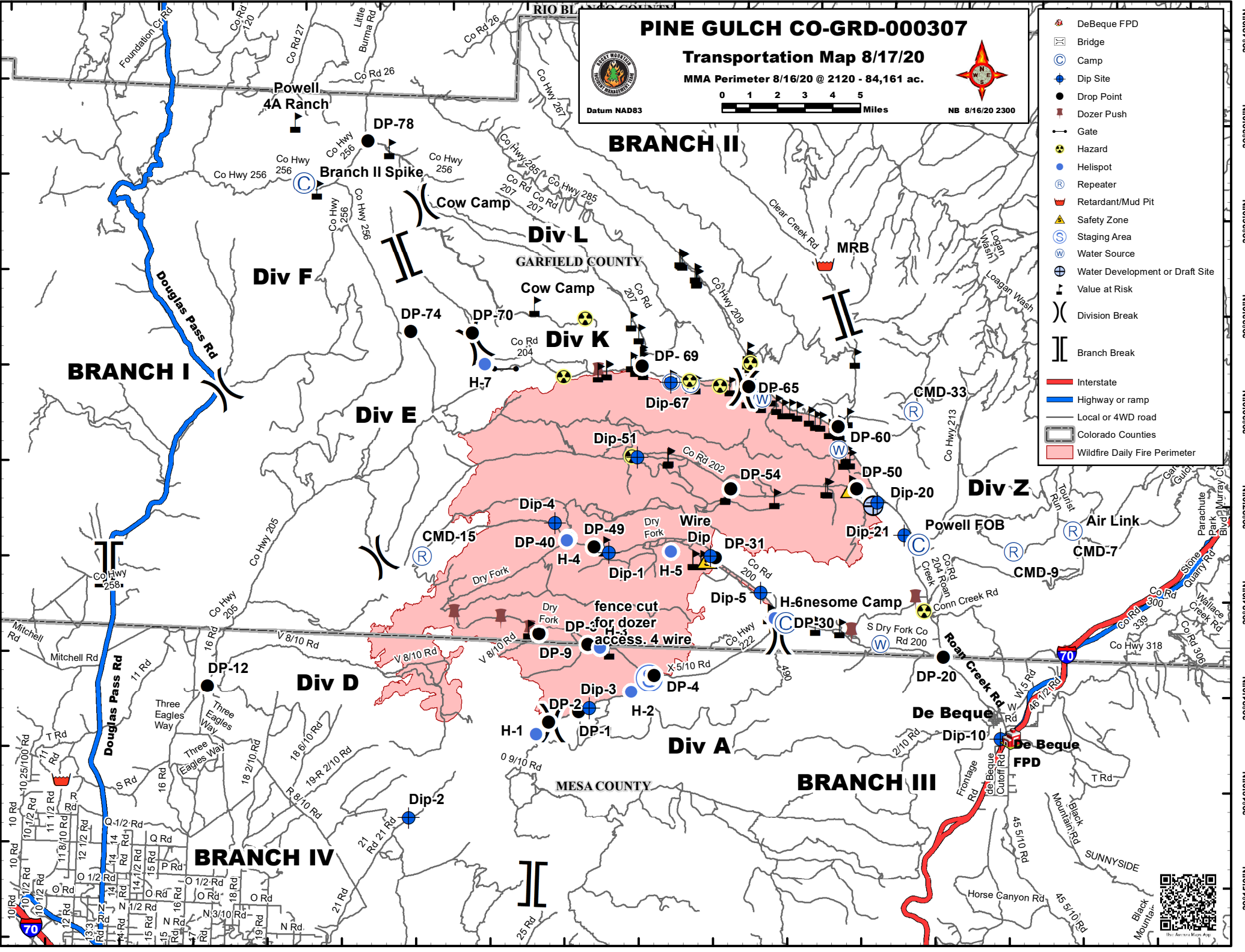


PINE GULCH CO-GRD-000307
Transportation Map 8/17/20
 MMA Perimeter 8/16/20 @ 2120 - 84,161 ac.
 Datum NAD83 NB 8/16/20 2300



- DeBeque FPD
- Bridge
- Camp
- Dip Site
- Drop Point
- Dozer Push
- Gate
- Hazard
- Helispot
- Repeater
- Retardant/Mud Pit
- Safety Zone
- Staging Area
- Water Source
- Water Development or Draft Site
- Value at Risk
- Division Break
- Branch Break
- Interstate
- Highway or ramp
- Local or 4WD road
- Colorado Counties
- Wildfire Daily Fire Perimeter



108°51'0"W 108°48'0"W 108°45'0"W 108°42'0"W 108°39'0"W 108°36'0"W 108°33'0"W 108°30'0"W 108°27'0"W 108°24'0"W 108°21'0"W 108°18'0"W 108°15'0"W 108°12'0"W 108°9'0"W 108°6'0"W