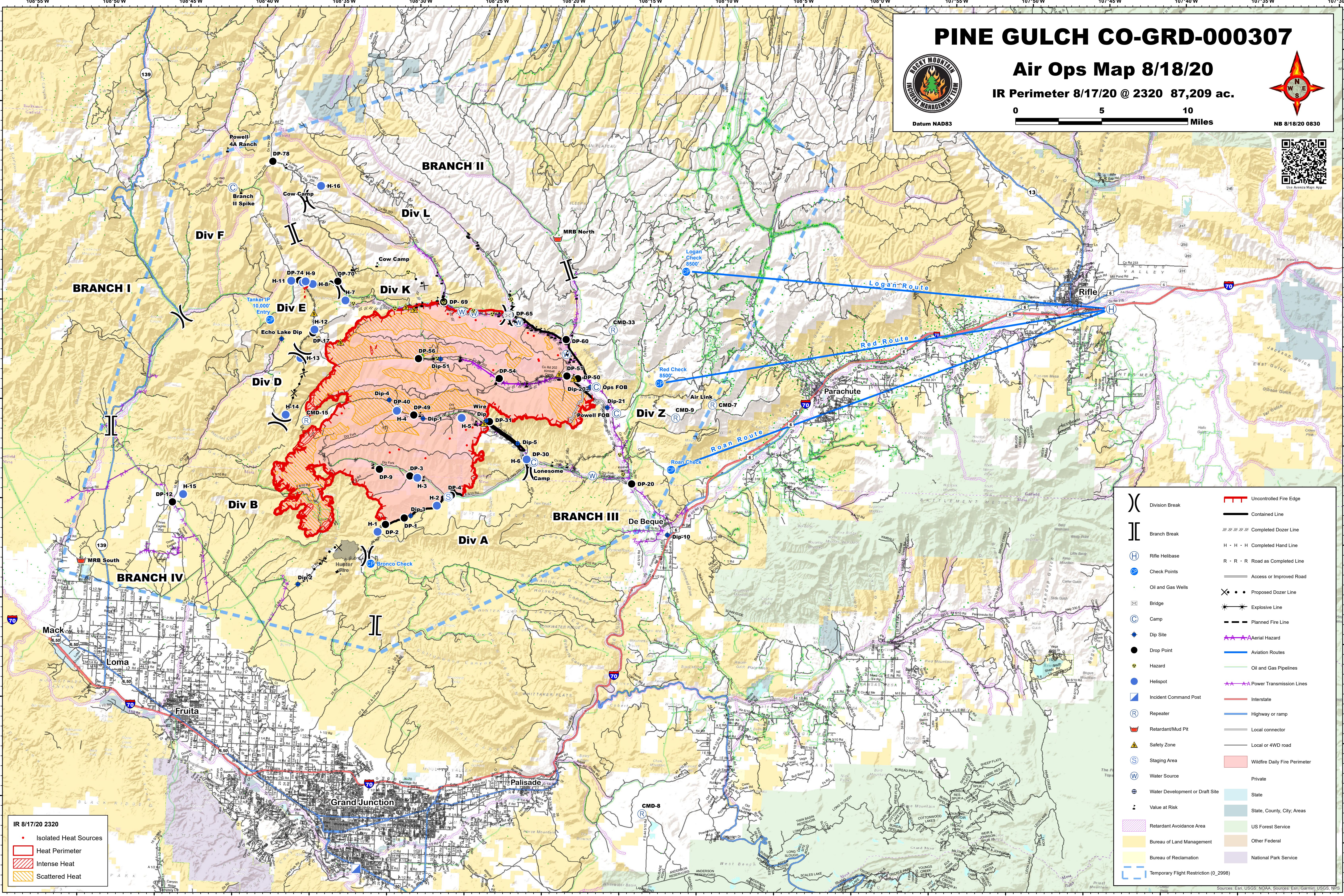


PINE GULCH CO-GRD-000307

Air Ops Map 8/18/20

IR Perimeter 8/17/20 @ 2320 87,209 ac.



IR 8/17/20 2320

- Isolated Heat Sources
- Heat Perimeter
- Intense Heat
- Scattered Heat

()	Division Break	—	Uncontrolled Fire Edge
[]	Branch Break	—	Contained Line
(H)	Rifle Helibase	—	Completed Dozer Line
(CP)	Check Points	H · H · H	Completed Hand Line
(O&G)	Oil and Gas Wells	R · R · R	Road as Completed Line
(B)	Bridge	—	Access or Improved Road
(C)	Camp	X · · ·	Proposed Dozer Line
(Dip)	Dip Site	*	Explosive Line
(Hazard)	Hazard	- - -	Planned Fire Line
(ICP)	Incident Command Post	—	Aerial Hazard
(R)	Repeater	—	Aviation Routes
(Retardant)	Retardant/Mud Pit	—	Oil and Gas Pipelines
(Safety)	Safety Zone	—	Power Transmission Lines
(S)	Staging Area	—	Interstate
(W)	Water Source	—	Highway or ramp
(Water Dev)	Water Development or Draft Site	—	Local connector
(V@R)	Value at Risk	—	Local or 4WD road
(Retardant Avoidance)	Retardant Avoidance Area	—	Wildfire Daily Fire Perimeter
(BLM)	Bureau of Land Management	—	Private
(Bureau of Reclamation)	Bureau of Reclamation	—	State, County, City, Areas
(Temporary Flight Restriction)	Temporary Flight Restriction (0_2988)	—	US Forest Service
		—	Other Federal
		—	National Park Service

39°40'N
39°35'N
39°30'N
39°25'N
39°20'N
39°15'N
39°10'N
39°5'N

108°55'W
108°50'W
108°45'W
108°40'W
108°35'W
108°30'W
108°25'W
108°20'W
108°15'W
108°10'W
108°5'W
108°0'W
107°55'W
107°50'W
107°45'W
107°40'W
107°35'W
107°30'W