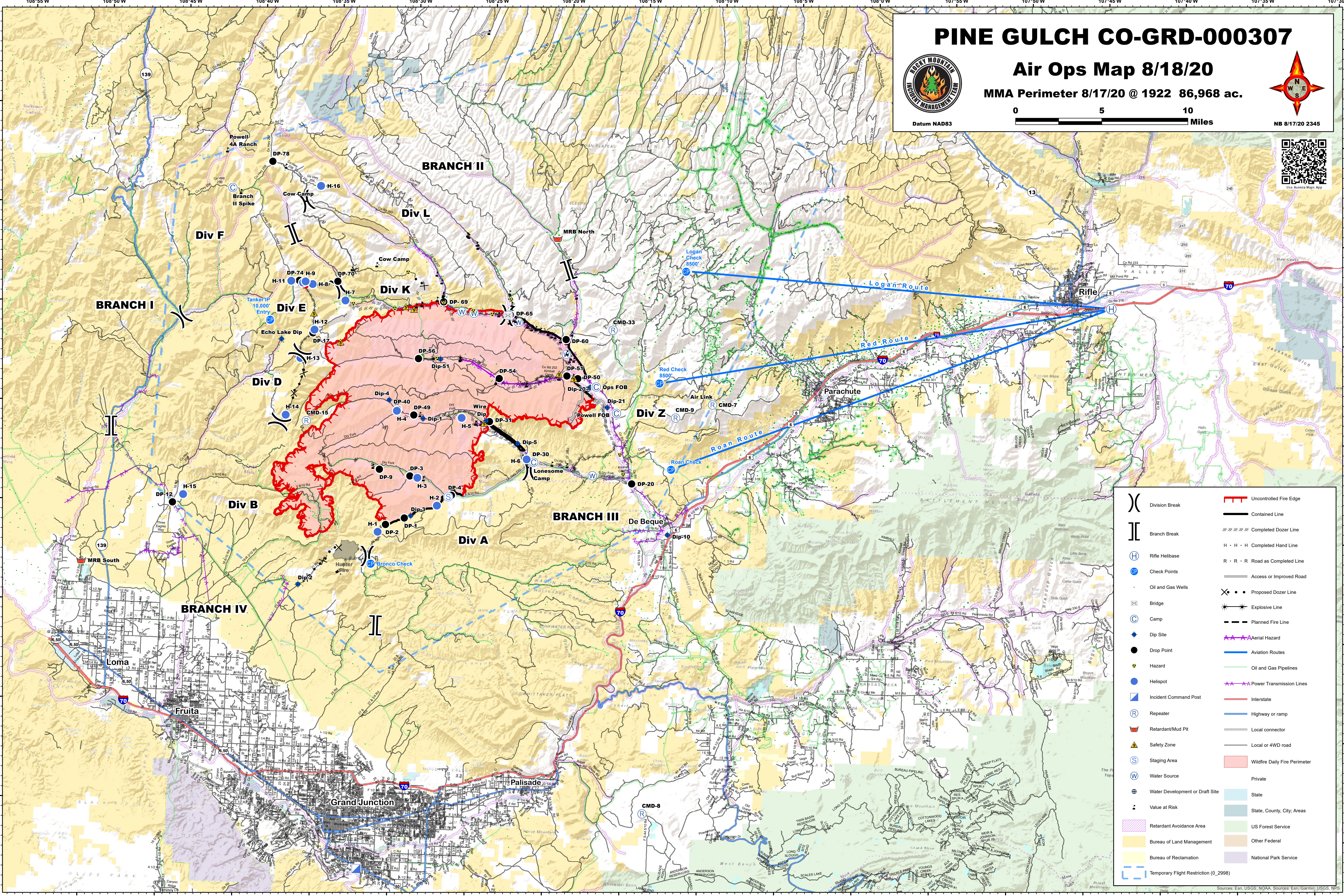
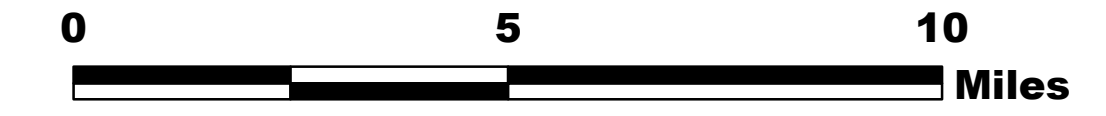


PINE GULCH CO-GRD-000307

Air Ops Map 8/18/20

MMA Perimeter 8/17/20 @ 1922 86,968 ac.



()	Division Break	—	Uncontrolled Fire Edge
[]	Branch Break	—	Contained Line
(H)	Rifle Helibase	—	Completed Dozer Line
(CP)	Check Points	H · H · H	Completed Hand Line
(OGW)	Oil and Gas Wells	R · R · R	Road as Completed Line
(B)	Bridge	—	Access or Improved Road
(C)	Camp	X · · ·	Proposed Dozer Line
(Dip)	Dip Site	*	Explosive Line
(DP)	Drop Point	—	Planned Fire Line
(Hazard)	Hazard	—	Aerial Hazard
(ICP)	Incident Command Post	—	Aviation Routes
(R)	Repeater	—	Oil and Gas Pipelines
(Retardant/Mud Pit)	Retardant/Mud Pit	—	Power Transmission Lines
(Safety Zone)	Safety Zone	—	Interstate
(S)	Staging Area	—	Highway or ramp
(W)	Water Source	—	Local connector
(Water Development or Draft Site)	Water Development or Draft Site	—	Local or 4WD road
(V at Risk)	Value at Risk	—	Wildfire Daily Fire Perimeter
(Retardant Avoidance Area)	Retardant Avoidance Area	—	Private
(Bureau of Land Management)	Bureau of Land Management	—	State
(Bureau of Reclamation)	Bureau of Reclamation	—	State, County, City, Areas
(Temporary Flight Restriction (0_2998))	Temporary Flight Restriction (0_2998)	—	US Forest Service
		—	Other Federal
		—	National Park Service

Sources: Esri, USGS, NOAA, Sources: Esri, Garmin, USGS, NPS