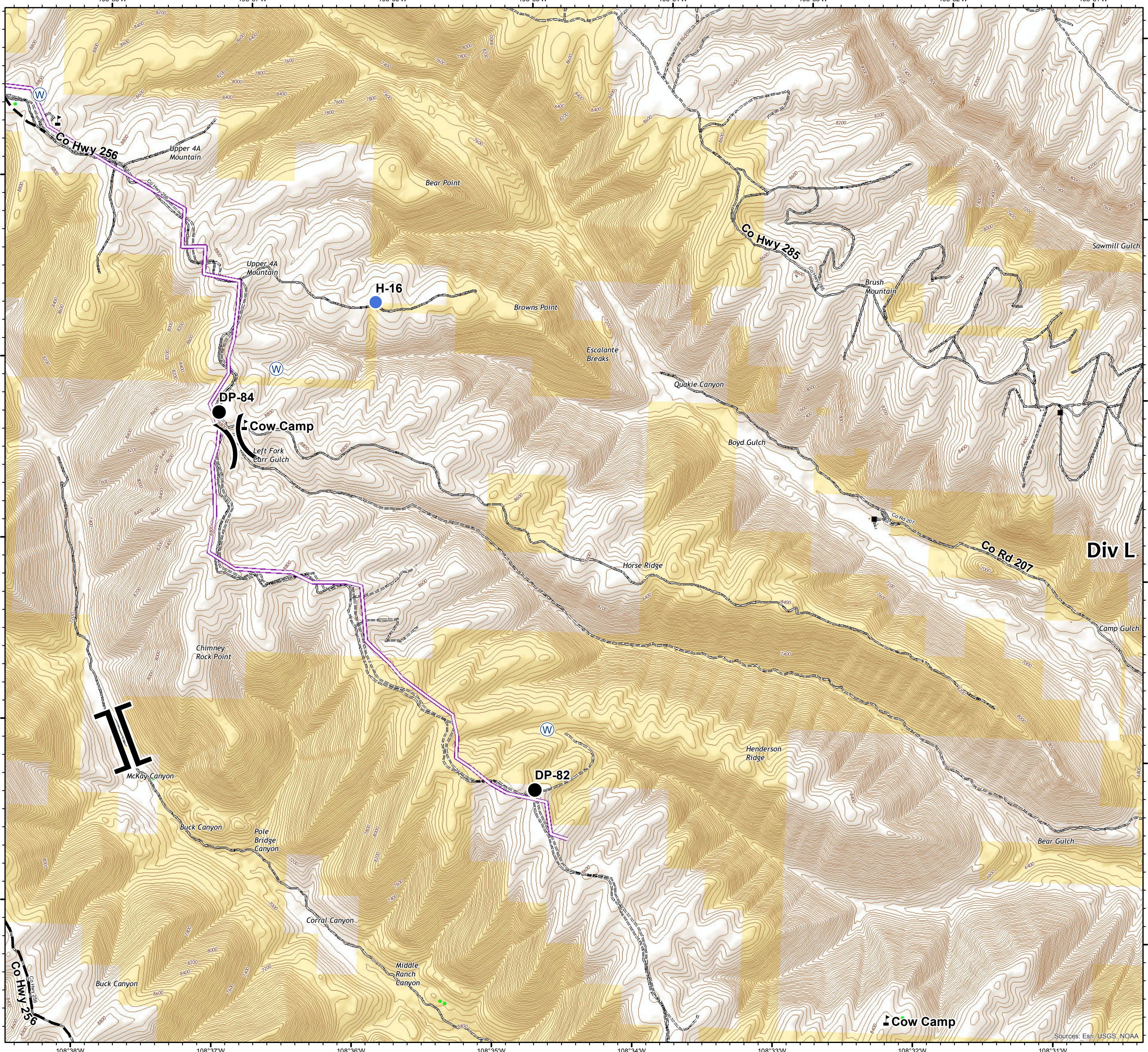
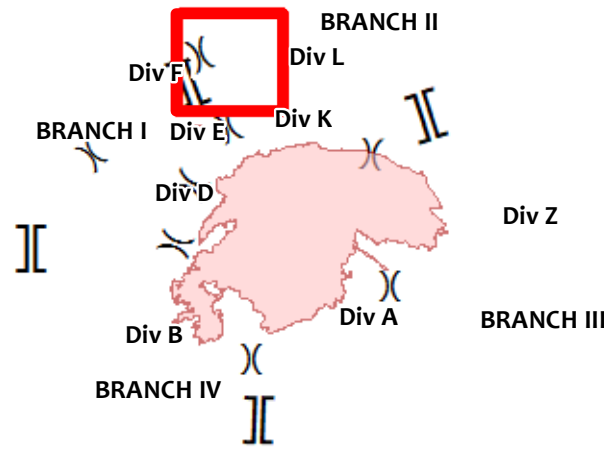
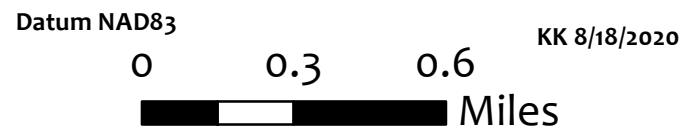


PINE GULCH
CO-GRD-000307
8/18/2020 Night
Div L - West



IR Perimeter as of 8/17/2020 @ 2320
 Approx acres 87,301



- Drop Point
- Helispot
- Water Source
- Value at Risk
- Division Break
- Branch Break
- Planned Fire Line
- NTDNOFS Road Segment
- All Pipelines
- Oil and Gas Wells
- Bureau of Land Management
- Private

Sources: Esri, USGS, NOAA