

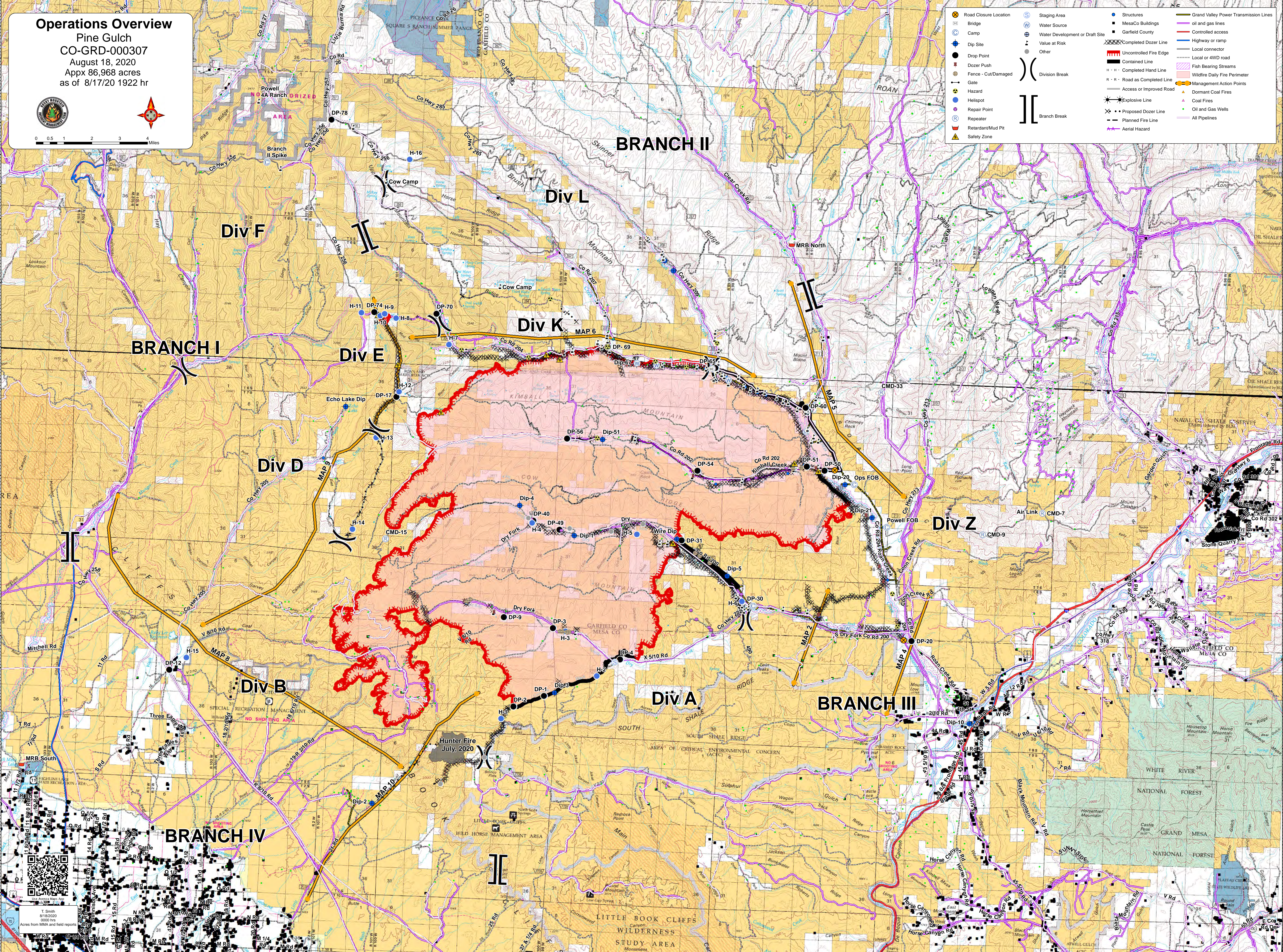
Operations Overview

Pine Gulch
CO-GRD-000307
August 18, 2020
Appx 86,968 acres
as of 8/17/20 1922 hr



0 0.5 1 2 3 4 Miles

Road Closure Location	Staging Area	Structures	Grand Valley Power Transmission Lines
Bridge	Water Source	MesaCo Buildings	Oil and gas lines
Camp	Water Development or Draft Site	Garfield County	Controlled access
Dip Site	Value at Risk	Completed Dozer Line	Highway or ramp
Drop Point	Other	Uncontrolled Fire Edge	Local connector
Dozer Push	Division Break	Contained Line	Local or 4WD road
Gate	Branch Break	Completed Hand Line	Fish Bearing Streams
Fence - Cut/Damaged	Access or Improved Road	Road as Completed Line	Management Action Points
Hazard	Explosive Line	Dormant Coal Fires	Wildfire Daily Fire Perimeter
Helispot	Coal Fires	Oil and Gas Wells	All Pipelines
Repair Point	Proposed Dozer Line	Planned Fire Line	
Repeater	Retardant/Mud Pit		
Safety Zone			



T. Smith
8/18/2020
0000 hrs
Acres from MMA and field reports