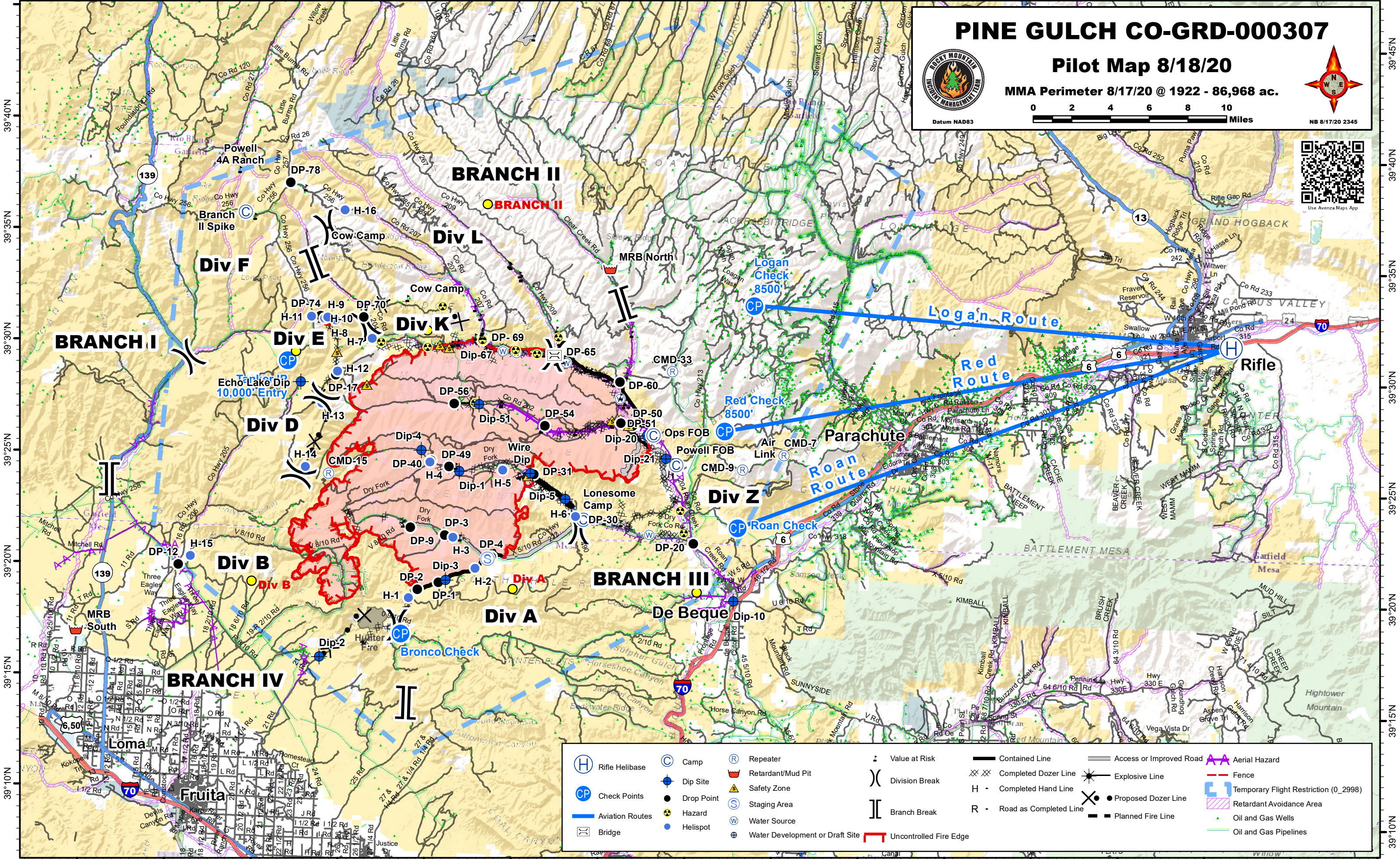


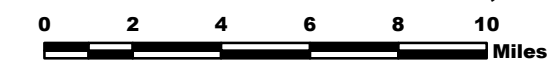
108°55'W 108°50'W 108°45'W 108°40'W 108°35'W 108°30'W 108°25'W 108°20'W 108°15'W 108°10'W 108°5'W 108°0'W 107°55'W 107°50'W 107°45'W 107°40'W



PINE GULCH CO-GRD-000307

Pilot Map 8/18/20

MMA Perimeter 8/17/20 @ 1922 - 86,968 ac.



Datum NAD83

NB 8/17/20 2345



Use Avenza Maps App

Rifle Helibase	Camp	Repeater	Value at Risk	Contained Line	Access or Improved Road	Aerial Hazard
Check Points	Dip Site	Retardant/Mud Pit	Division Break	Completed Dozer Line	Explosive Line	Temporary Flight Restriction (0_2998)
Aviation Routes	Drop Point	Safety Zone	Branch Break	Completed Hand Line	Proposed Dozer Line	Retardant Avoidance Area
Bridge	Hazard	Staging Area	Uncontrolled Fire Edge	Road as Completed Line	Planned Fire Line	Oil and Gas Wells
	Helispot	Water Source				Oil and Gas Pipelines
	Water Development or Draft Site	Water Source				

108°50'W 108°45'W 108°40'W 108°35'W 108°30'W 108°25'W 108°20'W 108°15'W 108°10'W 108°5'W 108°0'W 107°55'W 107°50'W 107°45'W 107°40'W

39°40'N 39°35'N 39°30'N 39°25'N 39°20'N 39°15'N 39°10'N

39°45'N 39°40'N 39°35'N 39°30'N 39°25'N 39°20'N 39°15'N 39°10'N