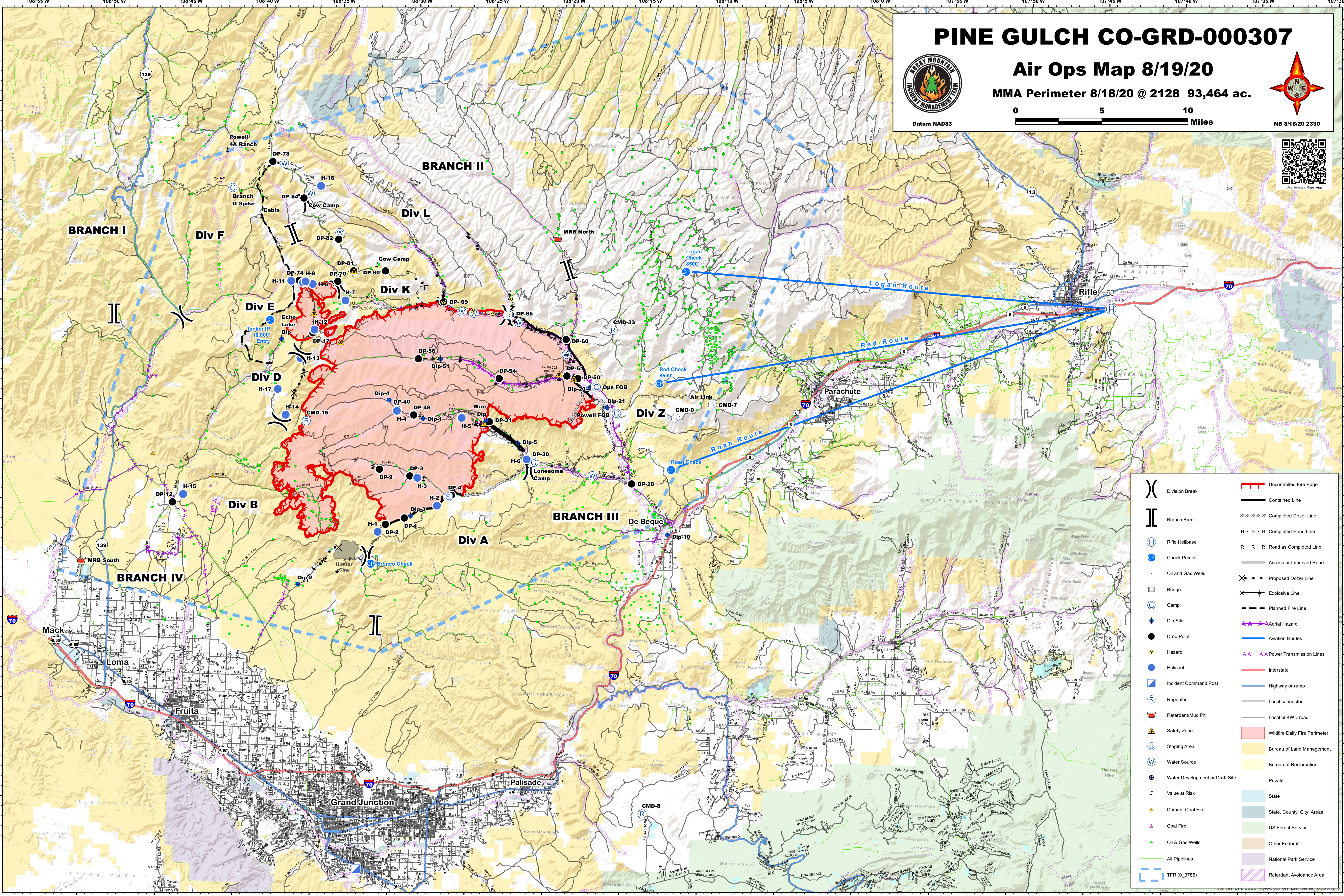
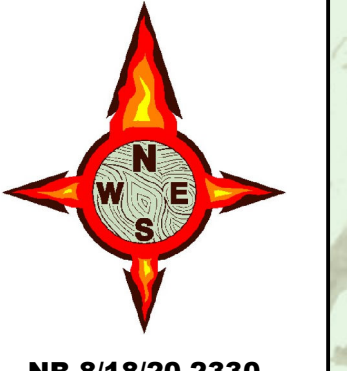
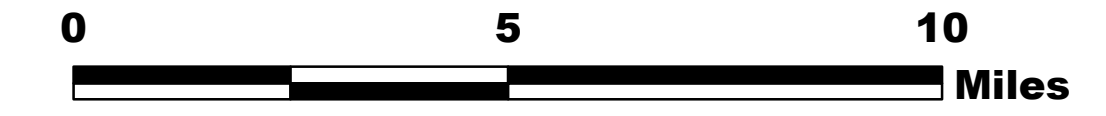


PINE GULCH CO-GRD-000307

Air Ops Map 8/19/20

MMA Perimeter 8/18/20 @ 2128 93,464 ac.



()	Division Break	—	Uncontrolled Fire Edge
	Branch Break	—	Contained Line
(H)	Rifle Helibase	—	Completed Dozer Line
(C)	Check Points	H · H · H	Completed Hand Line
(W)	Water Source	R · R · R	Road as Completed Line
(S)	Staging Area	—	Access or Improved Road
(X)	Oil and Gas Wells	—	Proposed Dozer Line
(B)	Bridge	—	Explosive Line
(C)	Camp	—	Planned Fire Line
(D)	Dip Site	—	Aerial Hazard
(H)	Hazard	—	Aviation Routes
(I)	Incident Command Post	—	Power Transmission Lines
(R)	Repeater	—	Interstate
(M)	Retardant/Mud Pit	—	Highway or ramp
(S)	Safety Zone	—	Local connector
(W)	Water Development or Draft Site	—	Local or 4WD road
(V)	Value at Risk	—	Wildfire Daily Fire Perimeter
(D)	Domant Coal Fire	—	Bureau of Land Management
(C)	Coal Fire	—	Bureau of Reclamation
(G)	Oil & Gas Wells	—	Private
(P)	All Pipelines	—	State
(T)	TFR (0_3785)	—	State, County, City, Areas
		—	US Forest Service
		—	Other Federal
		—	National Park Service
		—	Retardant Avoidance Area