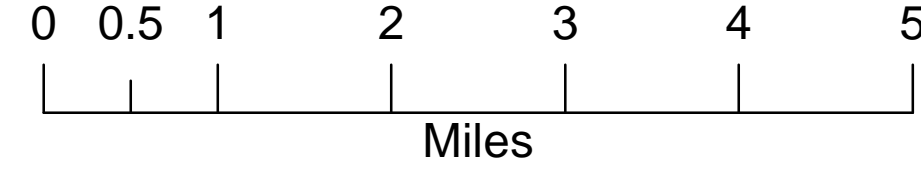
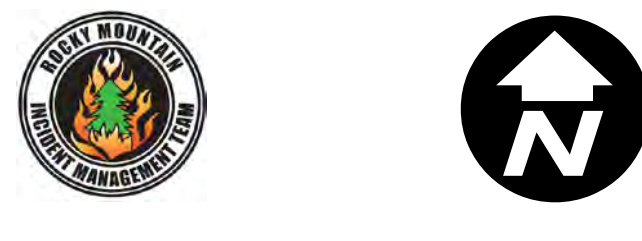


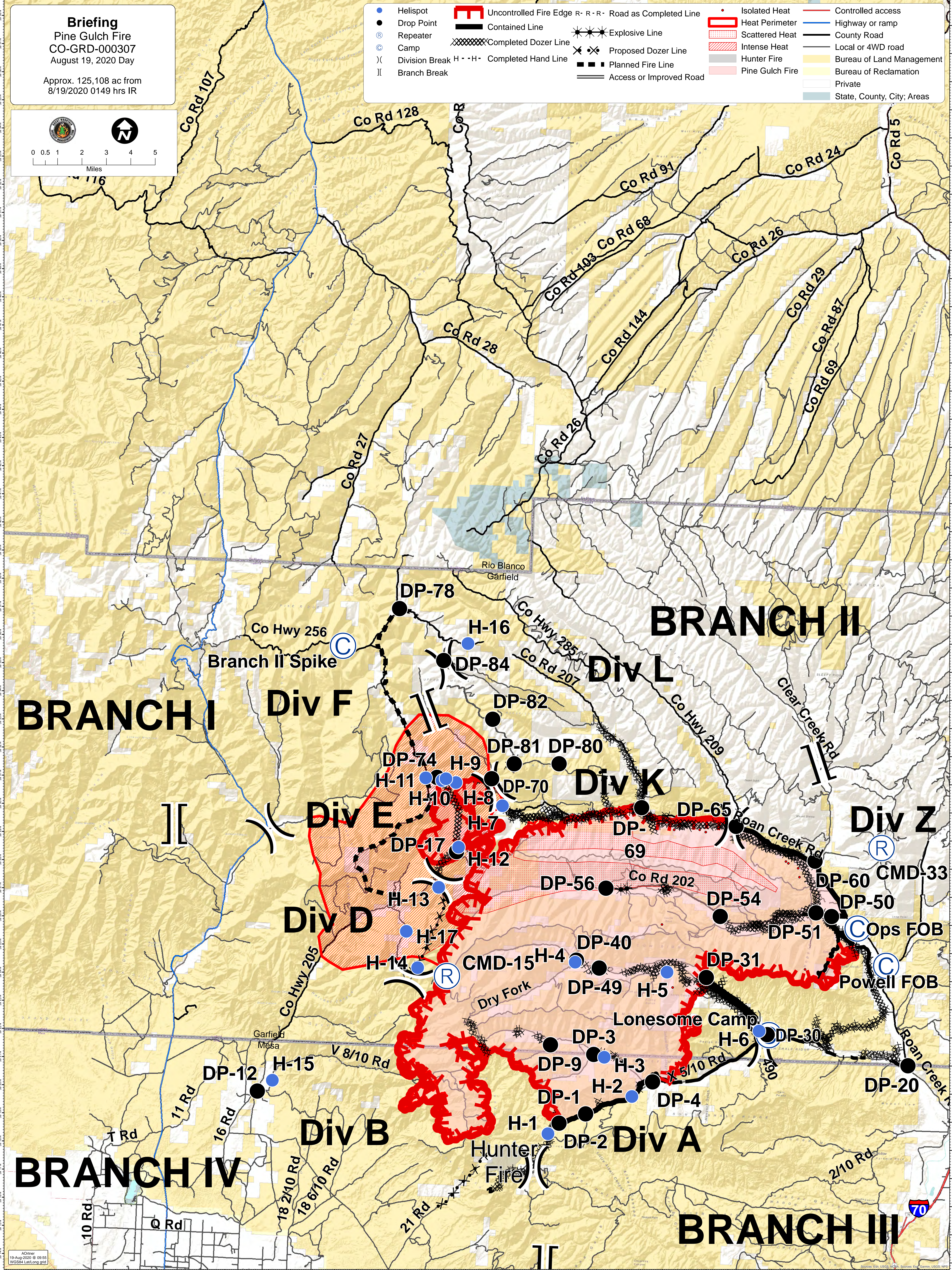
Briefing

Pine Gulch Fire
CO-GRD-000307
August 19, 2020 Day

Approx. 125,108 ac from
8/19/2020 0149 hrs IR



- Helispot
- Drop Point
- Ⓜ Repeater
- Ⓢ Camp
- ⌋ Division Break
- ⌋ Branch Break
- ▬ Uncontrolled Fire Edge R-R-R-R Road as Completed Line
- ▬ Contained Line
- ▬ Completed Dozer Line
- ▬ Completed Hand Line
- ⚡ Explosive Line
- ⚡ Proposed Dozer Line
- ▬ Planned Fire Line
- ▬ Access or Improved Road
- Isolated Heat
- ▭ Heat Perimeter
- ▭ Scattered Heat
- ▭ Intense Heat
- ▭ Hunter Fire
- ▭ Pine Gulch Fire
- ▬ Controlled access
- ▬ Highway or ramp
- ▬ County Road
- ▬ Local or 4WD road
- ▭ Bureau of Land Management
- ▭ Bureau of Reclamation
- ▭ Private
- ▭ State, County, City, Areas



BRANCH I

BRANCH II

BRANCH IV

BRANCH III

Adrienne
19-Aug-2020 @ 09:55
WGS84 Lat/Long grid

Source: Esri, USGS, NOAA, Sources: Esri, Garmin, USGS, NPS