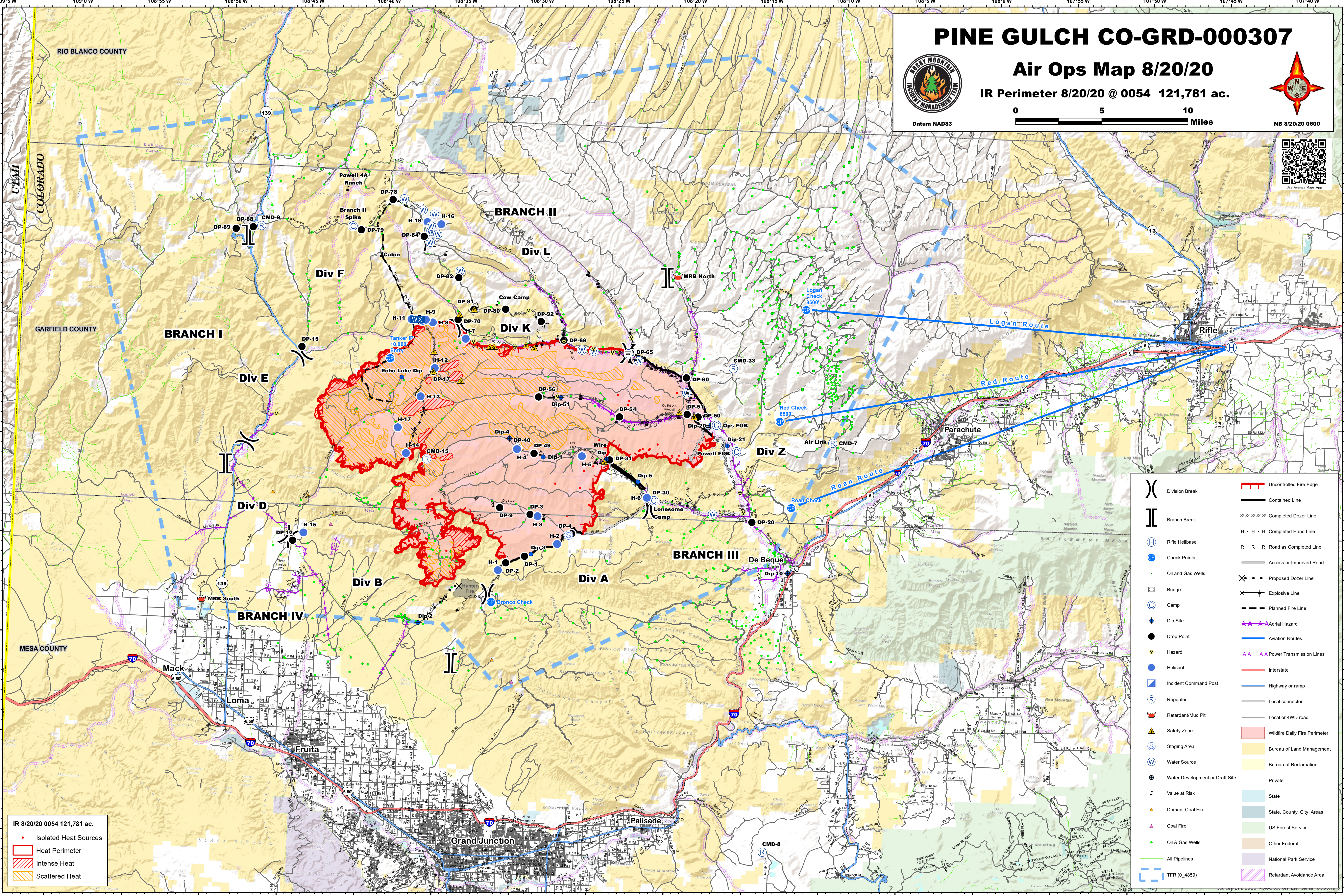
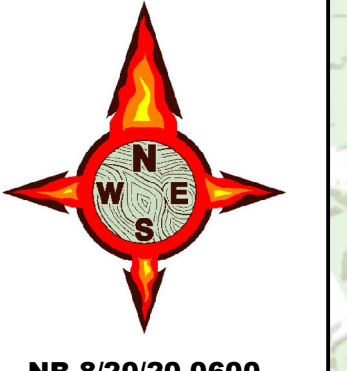
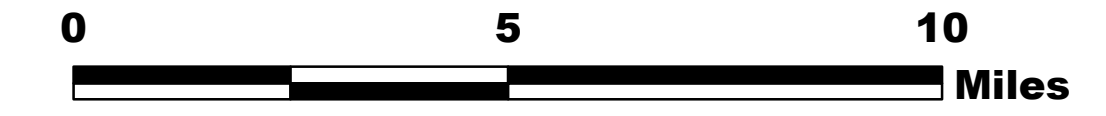


PINE GULCH CO-GRD-000307

Air Ops Map 8/20/20

IR Perimeter 8/20/20 @ 0054 121,781 ac.



IR 8/20/20 0054 121,781 ac.

- Isolated Heat Sources
- Heat Perimeter
- Intense Heat
- Scattered Heat

()	Division Break	—	Uncontrolled Fire Edge
()	Branch Break	—	Contained Line
(H)	Rifle Helibase	—	Completed Dozer Line
(C)	Check Points	H · H · H	Completed Hand Line
(W)	Oil and Gas Wells	R · R · R	Road as Completed Line
(B)	Bridge	—	Access or Improved Road
(C)	Camp	X · · ·	Proposed Dozer Line
(D)	Dip Site	*	Explosive Line
(●)	Drop Point	—	Planned Fire Line
(▲)	Hazard	—	Aerial Hazard
(S)	Incident Command Post	—	Aviation Routes
(R)	Repeater	—	Power Transmission Lines
(M)	Retardant/Mud Pit	—	Interstate
(▲)	Safety Zone	—	Highway or ramp
(S)	Staging Area	—	Local connector
(W)	Water Source	—	Local or 4WD road
(⊕)	Water Development or Draft Site	—	Wildfire Daily Fire Perimeter
(●)	Value at Risk	—	Bureau of Land Management
(▲)	Domant Coal Fire	—	Bureau of Reclamation
(▲)	Coal Fire	—	Private
(●)	Oil & Gas Wells	—	State
(—)	All Pipelines	—	State, County, City, Areas
(—)	TFR (0.4859)	—	US Forest Service
		—	Other Federal
		—	National Park Service
		—	Retardant Avoidance Area