

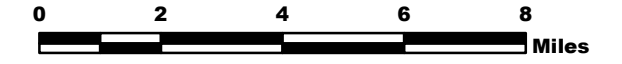
PINE GULCH CO-GRD-000307

Transportation Map 8/20/20

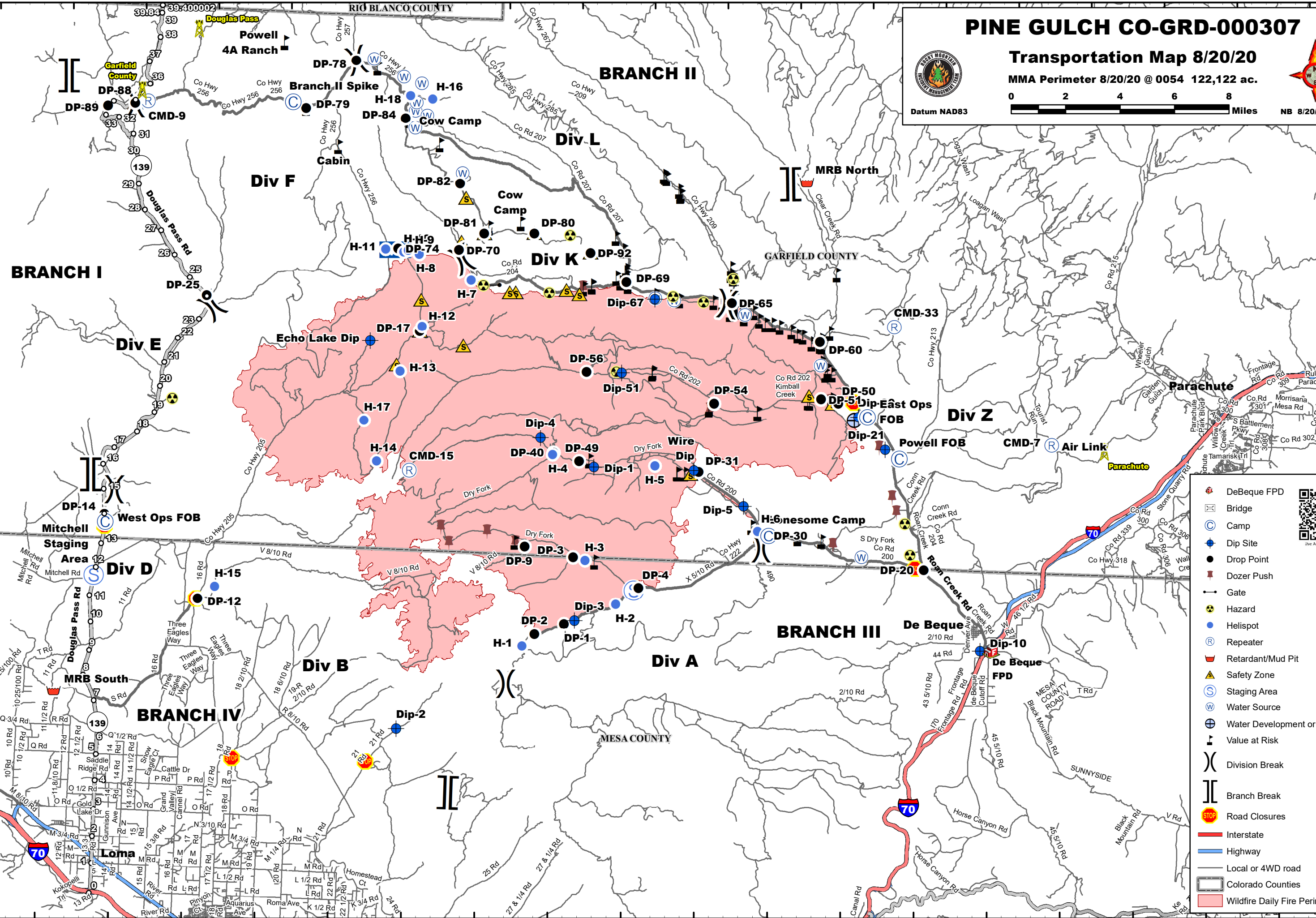
MMA Perimeter 8/20/20 @ 0054 122,122 ac.



Datum NAD83



NB 8/20/20 1500



- DeBeque FPD
- Bridge
- Camp
- Dip Site
- Drop Point
- Dozer Push
- Gate
- Hazard
- Helispot
- Repeater
- Retardant/Mud Pit
- Safety Zone
- Staging Area
- Water Source
- Water Development or Draft Site
- Value at Risk
- Division Break
- Branch Break
- Road Closures
- Interstate
- Highway
- Local or 4WD road
- Colorado Counties
- Wildfire Daily Fire Perimeter



108°54'0"W 108°51'0"W 108°48'0"W 108°45'0"W 108°42'0"W 108°39'0"W 108°36'0"W 108°33'0"W 108°30'0"W 108°27'0"W 108°24'0"W 108°21'0"W 108°18'0"W 108°15'0"W 108°12'0"W 108°9'0"W 108°6'0"W 108°3'0"W 108°0'0"W 107°57'0"W

39°39'0"N 39°36'0"N 39°33'0"N 39°30'0"N 39°27'0"N 39°24'0"N 39°21'0"N 39°18'0"N 39°15'0"N 39°12'0"N