

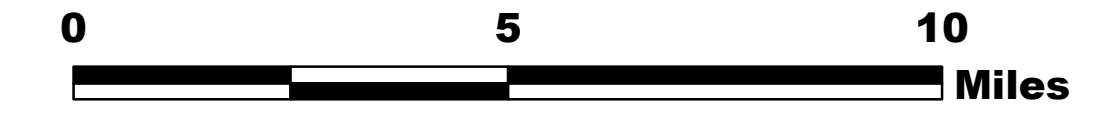
PINE GULCH CO-GRD-000307

Air Ops Map 8/21/20

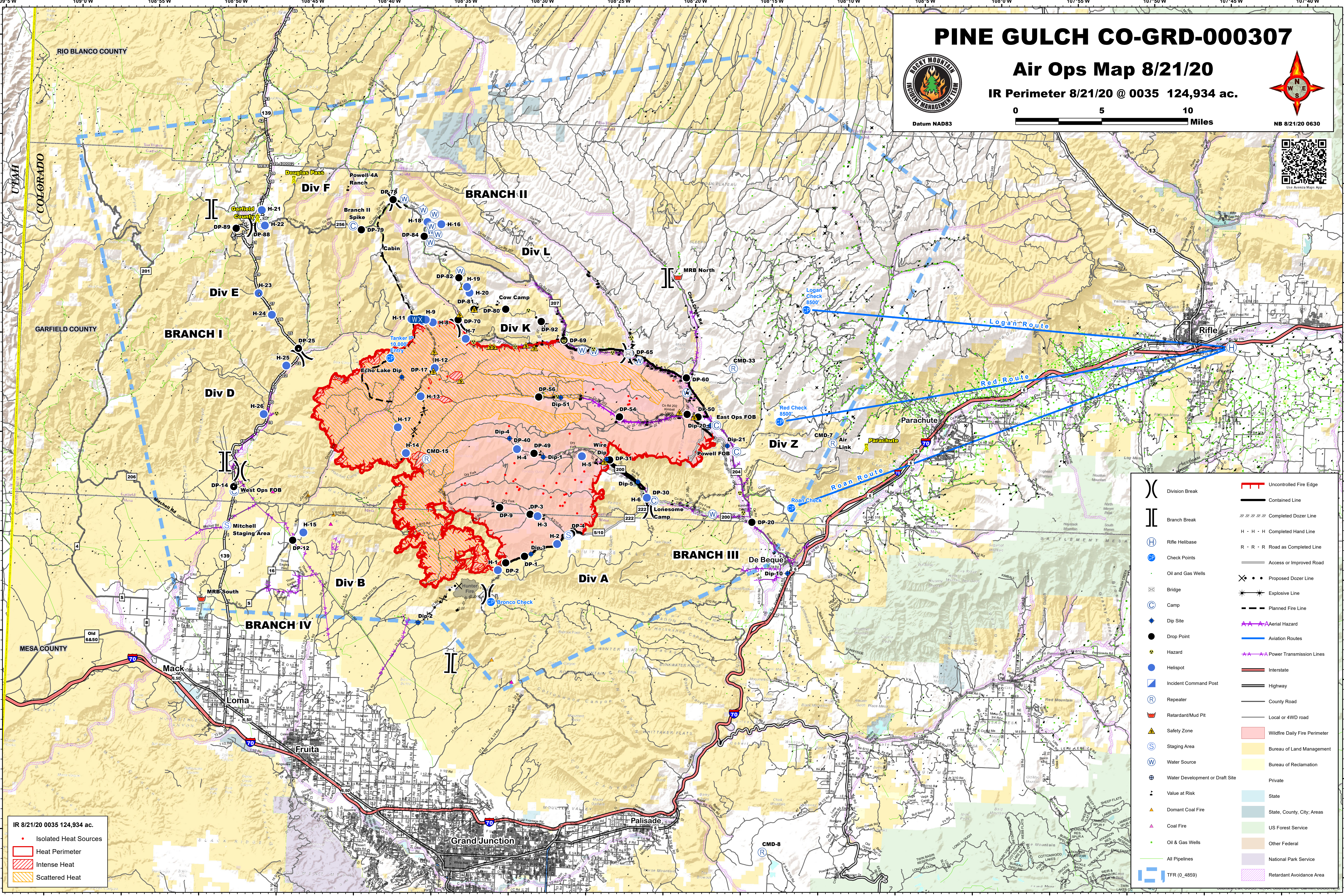
IR Perimeter 8/21/20 @ 0035 124,934 ac.



Datum NAD83



NB 8/21/20 0630



IR 8/21/20 0035 124,934 ac.

- Isolated Heat Sources
- Heat Perimeter
- Intense Heat
- Scattered Heat

()	Division Break	—	Uncontrolled Fire Edge
	Branch Break	—	Contained Line
(H)	Rifle Helibase	—	Completed Dozer Line
(CP)	Check Points	H · H · H	Completed Hand Line
(OGW)	Oil and Gas Wells	R · R · R	Road as Completed Line
(B)	Bridge	—	Access or Improved Road
(C)	Camp	—	Proposed Dozer Line
(Dip)	Dip Site	—	Explosive Line
(DP)	Drop Point	—	Planned Fire Line
(Hazard)	Hazard	—	Aerial Hazard
(ICP)	Incident Command Post	—	Aviation Routes
(R)	Repeater	—	Power Transmission Lines
(RMP)	Retardant/Mud Pit	—	Interstate
(SZ)	Safety Zone	—	Highway
(SA)	Staging Area	—	County Road
(WS)	Water Source	—	Local or 4WD road
(WDS)	Water Development or Draft Site	—	Wildfire Daily Fire Perimeter
(VOR)	Value at Risk	—	Bureau of Land Management
(DC)	Domant Coal Fire	—	Bureau of Reclamation
(CF)	Coal Fire	—	Private
(OGW)	Oil & Gas Wells	—	State
(P)	All Pipelines	—	State, County, City, Areas
(TFR)	TFR (0.4859)	—	US Forest Service
		—	Other Federal
		—	National Park Service
		—	Retardant Avoidance Area