

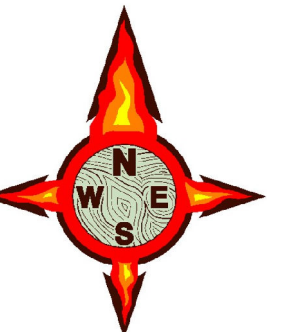
PINE GULCH CO-GRD-000307

Air Ops Map 8/21/20

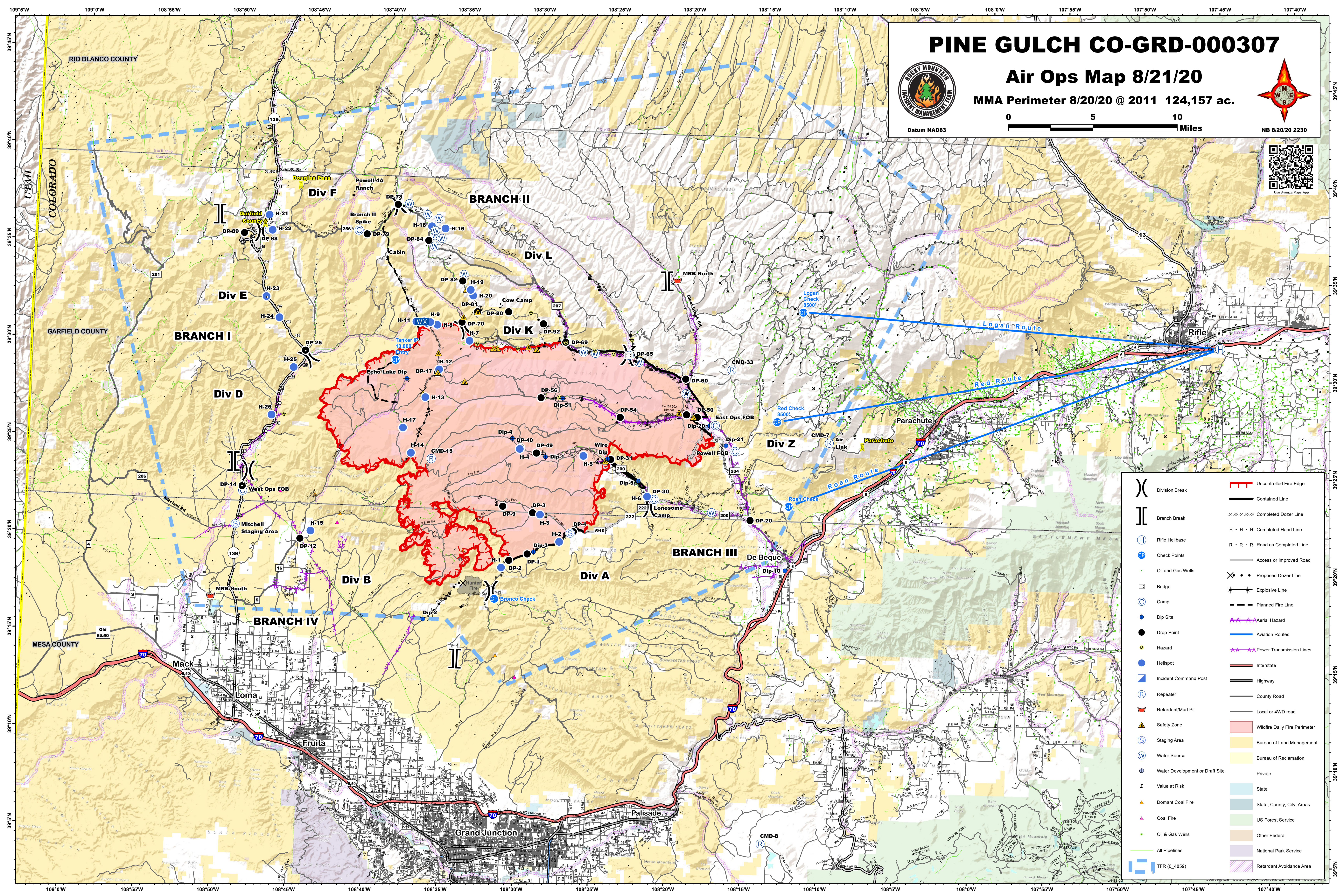
MMA Perimeter 8/20/20 @ 2011 124,157 ac.



Datum NAD83



NB 8/20/20 2230



()	Division Break	—	Uncontrolled Fire Edge
()	Branch Break	—	Contained Line
(H)	Rifle Helibase	—	Completed Dozer Line
(CP)	Check Points	H · H · H	Completed Hand Line
()	Oil and Gas Wells	R · R · R	Road as Completed Line
(BR)	Bridge	—	Access or Improved Road
(C)	Camp	—	Proposed Dozer Line
(DP)	Dip Site	—	Explosive Line
(●)	Drop Point	—	Planned Fire Line
(●)	Hazard	—	Aerial Hazard
(●)	Helispot	—	Aviation Routes
(●)	Incident Command Post	—	Power Transmission Lines
(●)	Repeater	—	Interstate
(●)	Retardant/Mud Pit	—	Highway
(●)	Safety Zone	—	County Road
(S)	Staging Area	—	Local or 4WD road
(W)	Water Source	—	Wildfire Daily Fire Perimeter
(⊕)	Water Development or Draft Site	—	Bureau of Land Management
(●)	Value at Risk	—	Bureau of Reclamation
(●)	Dormant Coal Fire	—	Private
(●)	Coal Fire	—	State
(●)	Oil & Gas Wells	—	State, County, City, Areas
(●)	All Pipelines	—	US Forest Service
(●)	TFR (0_4859)	—	Other Federal
		—	National Park Service
		—	Retardant Avoidance Area