

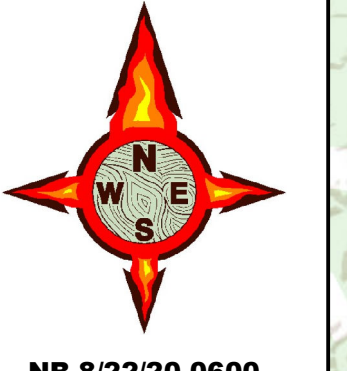
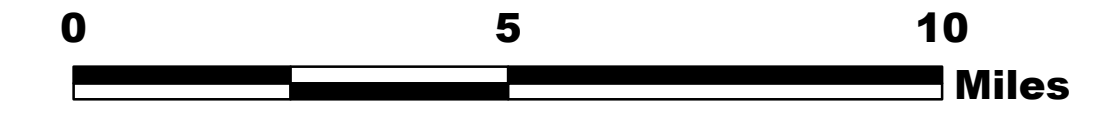
# PINE GULCH CO-GRD-000307

## Air Ops Map 8/22/20

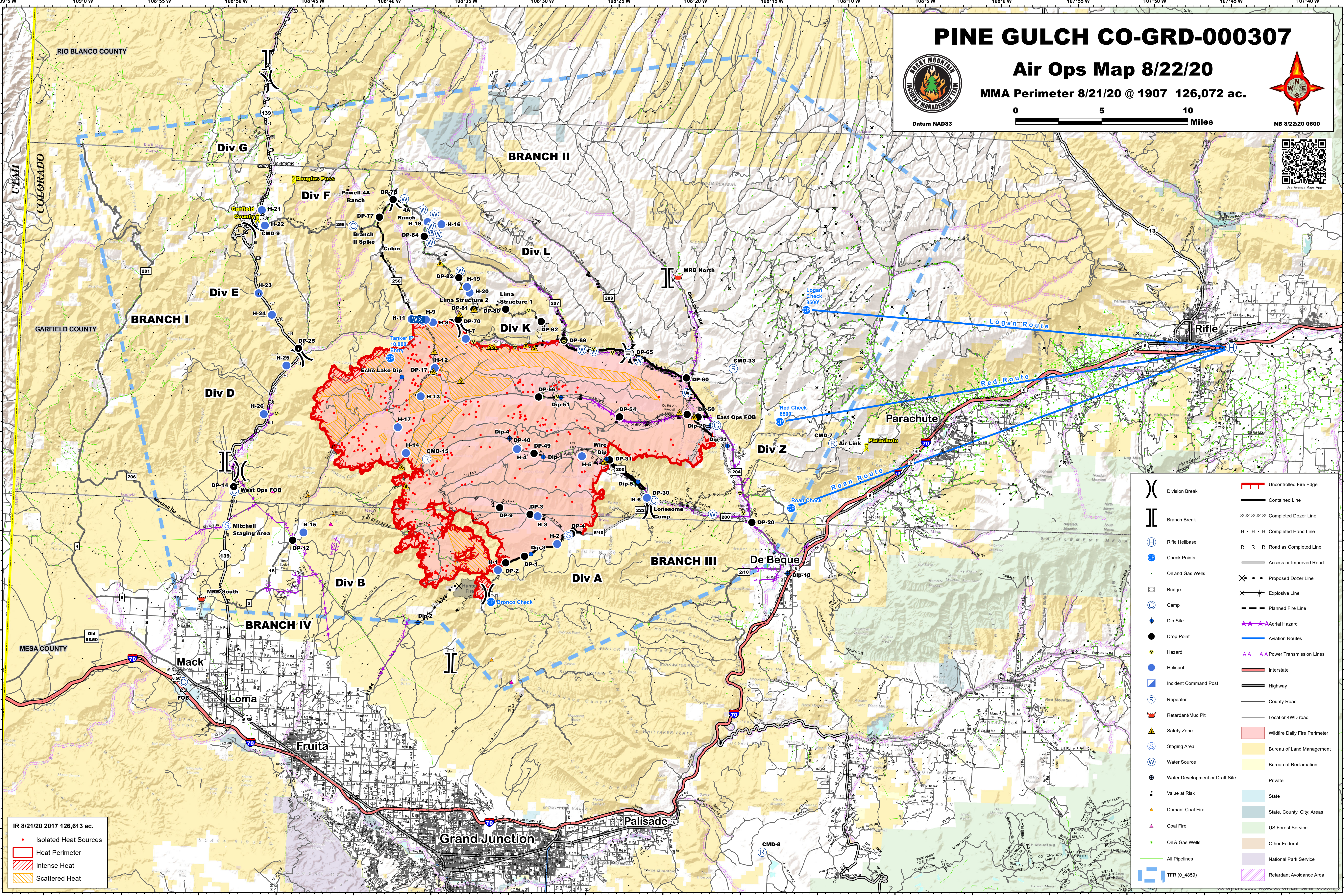
MMA Perimeter 8/21/20 @ 1907 126,072 ac.



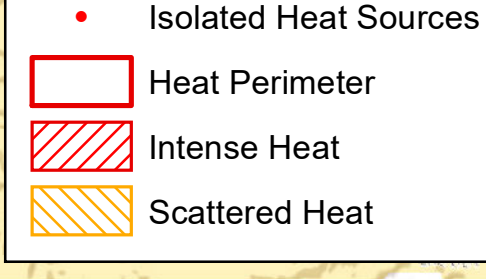
Datum NAD83



NB 8/22/20 0600



IR 8/21/20 2017 126,613 ac.



( )	Division Break	—	Uncontrolled Fire Edge
( )	Branch Break	—	Contained Line
(H)	Rifle Helibase	—	Completed Dozer Line
(CP)	Check Points	H · H · H	Completed Hand Line
(O&G)	Oil and Gas Wells	R · R · R	Road as Completed Line
(B)	Bridge	—	Access or Improved Road
(C)	Camp	X · X · X	Proposed Dozer Line
(Dip)	Dip Site	*	Explosive Line
(DP)	Drop Point	---	Planned Fire Line
(Hazard)	Hazard	—	Aerial Hazard
(Helispot)	Helispot	—	Aviation Routes
(ICP)	Incident Command Post	—	Power Transmission Lines
(R)	Repeater	—	Interstate
(RMP)	Retardant/Mud Pit	—	Highway
(SZ)	Safety Zone	—	County Road
(SA)	Staging Area	—	Local or 4WD road
(WS)	Water Source	—	Wildfire Daily Fire Perimeter
(WDS)	Water Development or Draft Site	—	Bureau of Land Management
(V@R)	Value at Risk	—	Bureau of Reclamation
(DC)	Domant Coal Fire	—	Private
(CF)	Coal Fire	—	State
(O&G)	Oil & Gas Wells	—	State, County, City, Areas
(P)	All Pipelines	—	US Forest Service
(TFR)	TFR (0.4859)	—	Other Federal
		—	National Park Service
		—	Retardant Avoidance Area