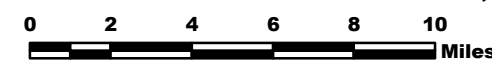


# PINE GULCH CO-GRD-000307

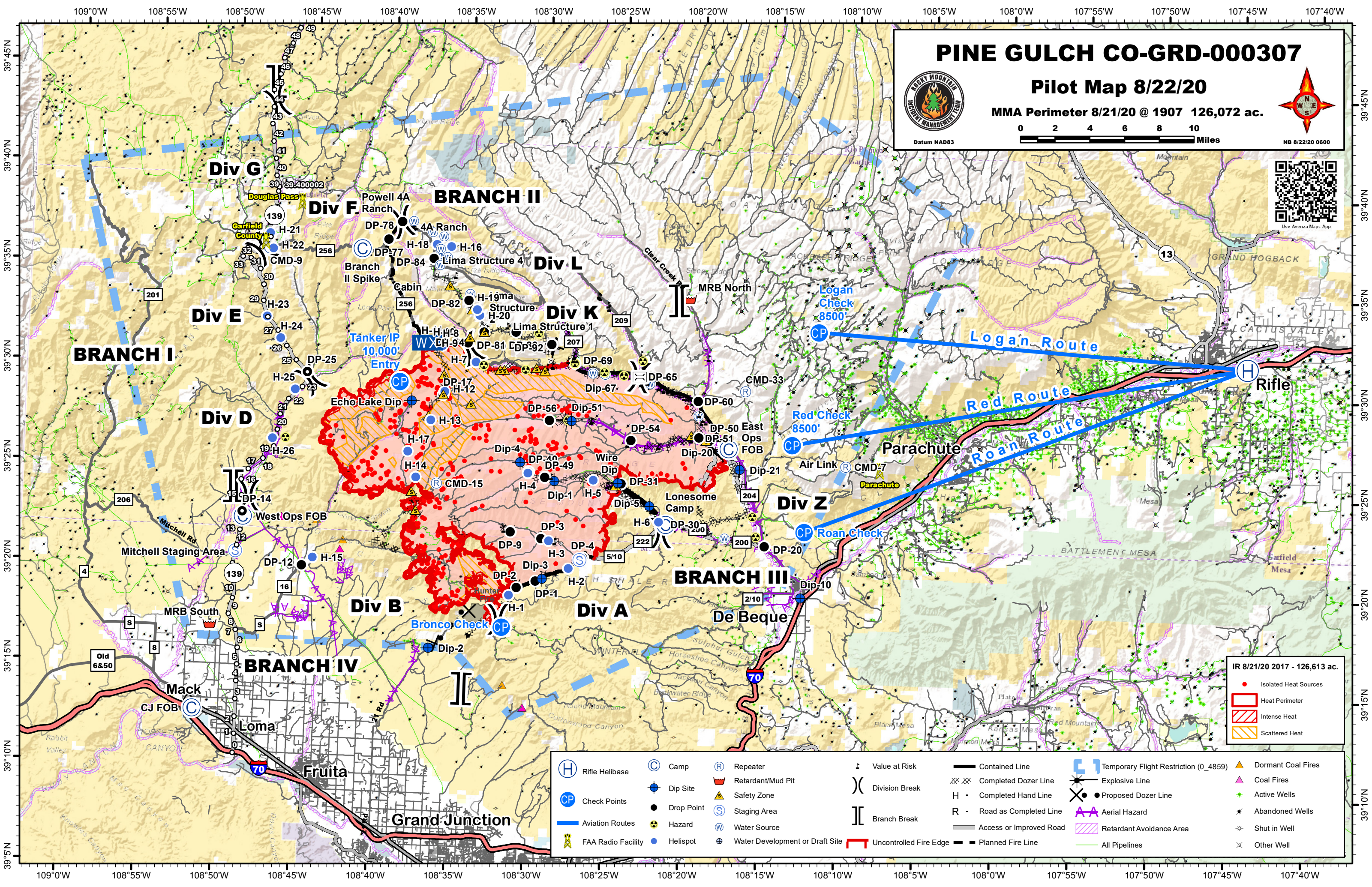
## Pilot Map 8/22/20

MMA Perimeter 8/21/20 @ 1907 126,072 ac.



Datum NAD83

NB 8/22/20 0600



IR 8/21/20 2017 - 126,613 ac.

- Isolated Heat Sources
- Heat Perimeter
- Intense Heat
- Scattered Heat

(H) Rifle Helibase	(C) Camp	(R) Repeater	Value at Risk	Contained Line	Temporary Flight Restriction (0_4859)	(▲) Dormant Coal Fires
(CP) Check Points	(●) Dip Site	(▲) Retardant/Mud Pit	(X) Division Break	XX XX Completed Dozer Line	(*) Explosive Line	(▲) Coal Fires
(—) Aviation Routes	(●) Drop Point	(▲) Safety Zone	(  ) Branch Break	H - Completed Hand Line	(X) Proposed Dozer Line	(★) Active Wells
(📡) FAA Radio Facility	(⚠) Hazard	(S) Staging Area		R - Road as Completed Line	(A) Aerial Hazard	(★) Abandoned Wells
	(W) Water Source	(W) Water Development or Draft Site		(—) Access or Improved Road	(—) Retardant Avoidance Area	(⊛) Shut in Well
	(●) Helispot	(—) Uncontrolled Fire Edge		(—) Planned Fire Line	(—) All Pipelines	(X) Other Well