

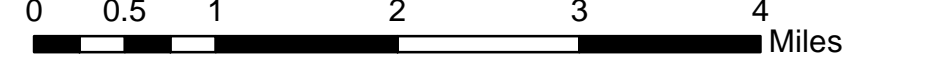
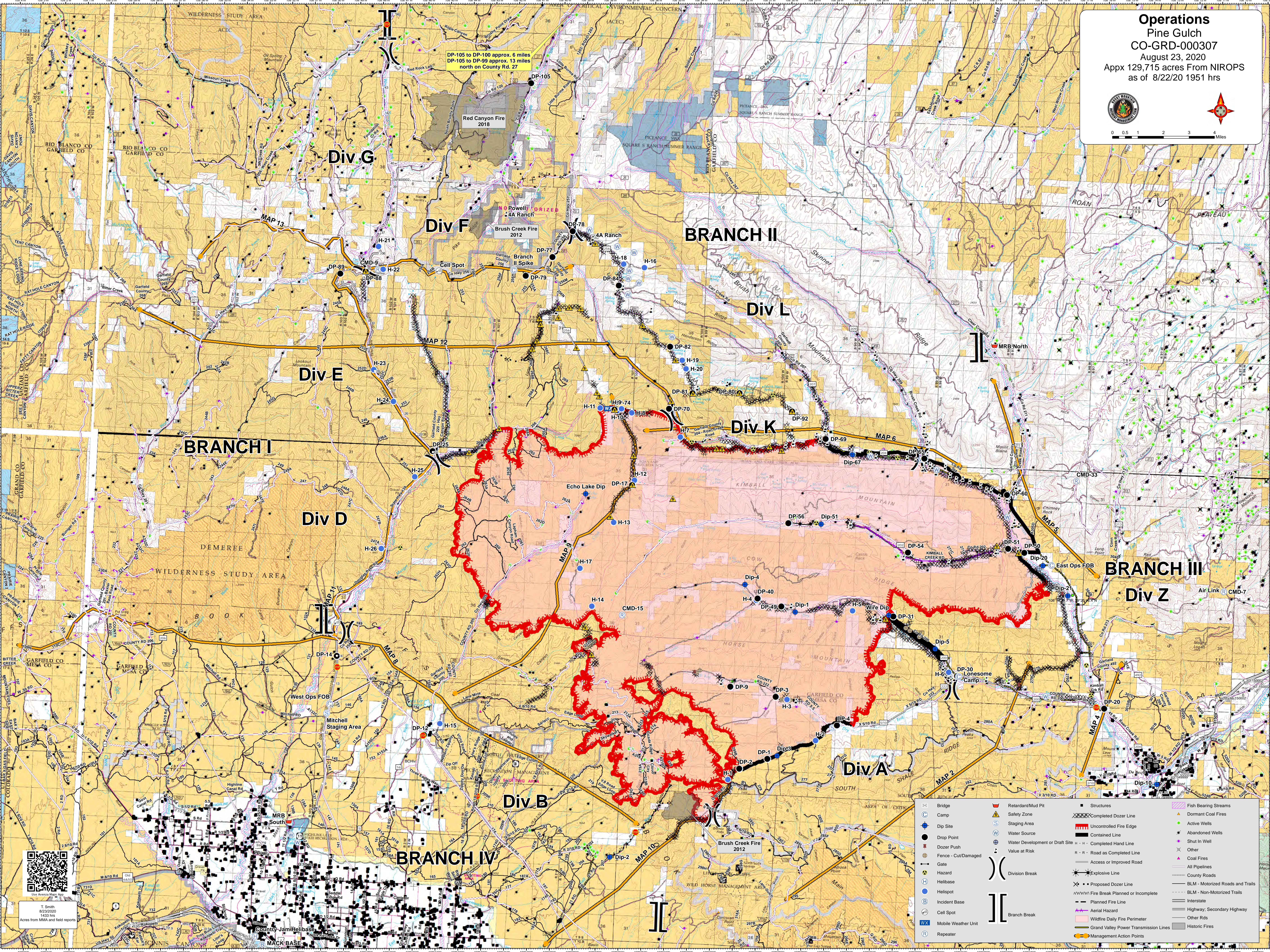


**Operations**  
**Pine Gulch**  
**CO-GRD-000307**  
 August 23, 2020  
 Appx 129,715 acres From NIROPS  
 as of 8/22/20 1951 hrs

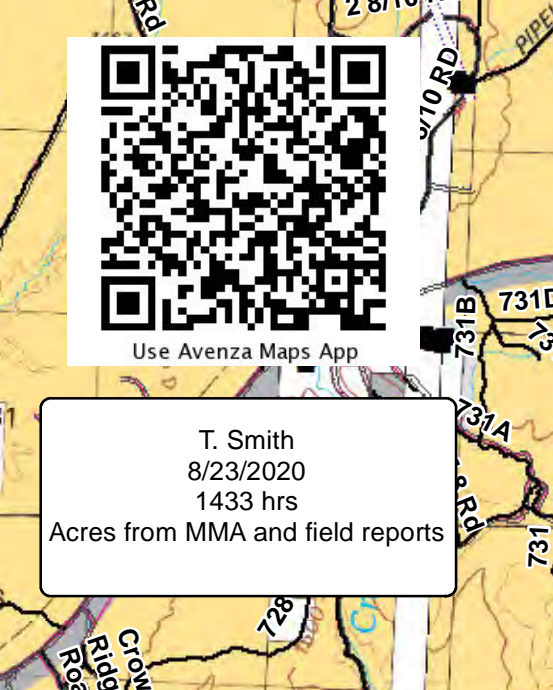





DP-105 to DP-100 approx. 6 miles  
 DP-105 to DP-99 approx. 13 miles  
 north on County Rd. 27

Red Canyon Fire 2018

Brush Creek Fire 2012

Brush Creek Fire 2012



T. Smith  
 8/23/2020  
 1433 hrs  
 Acres from MMA and field reports

Bridge	Retardant/Mud Pit	Structures	Fish Bearing Streams
Camp	Safety Zone	Completed Dozer Line	Dormant Coal Fires
Dip Site	Staging Area	Uncontrolled Fire Edge	Active Wells
Drop Point	Water Source	Contained Line	Abandoned Wells
Dozer Push	Water Development or Draft Site	Completed Hand Line	Shut In Well
Fence - Cui/Damaged	Value at Risk	R - R - Road as Completed Line	Coal Fires
Gate	Hazard	Access or Improved Road	All Pipelines
Helibase	Division Break	Explosive Line	County Roads
Helispot	Branch Break	Proposed Dozer Line	BLM - Motorized Roads and Trails
Helispot Base		Fire Break Planned or Incomplete	BLM - Non-Motorized Trails
Cell Spot		Planned Fire Line	Interstate
Mobile Weather Unit		Aerial Hazard	Highway, Secondary Highway
Repeater		Wildfire Daily Fire Perimeter	Other Rds
		Grand Valley Power Transmission Lines	Historic Fires
		Management Action Points	