

PINE GULCH CO-GRD-000307

Air Ops Map 8/24/20

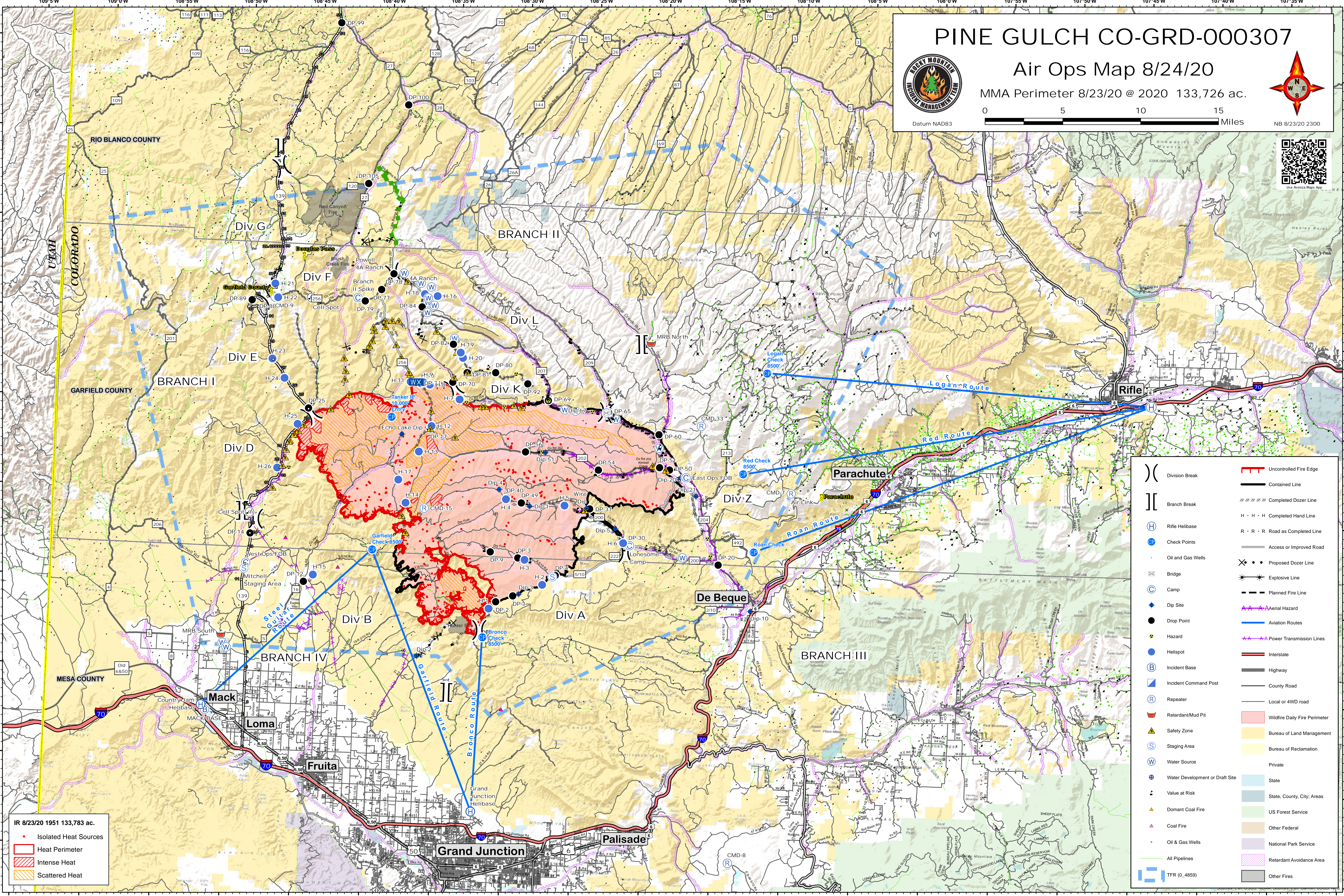
MMA Perimeter 8/23/20 @ 2020 133,726 ac.



Datum NAD83



Use Avenza Maps App



IR 8/23/20 1951 133,783 ac.

- Isolated Heat Sources
- Heat Perimeter
- Intense Heat
- Scattered Heat

()	Division Break	—	Uncontrolled Fire Edge
	Branch Break	—	Contained Line
(H)	Rifle Helibase	—	Completed Dozer Line
(C)	Check Points	—	Completed Hand Line
(W)	Water Source	—	R · R · R Road as Completed Line
(S)	Staging Area	—	Access or Improved Road
(R)	Repeater	—	Proposed Dozer Line
(B)	Incident Base	—	Explosive Line
(I)	Incident Command Post	—	Planned Fire Line
(D)	Dip Site	—	Aerial Hazard
(H)	Hazard	—	Power Transmission Lines
(S)	Safety Zone	—	Aviation Routes
(W)	Water Development or Draft Site	—	Interstate
(V)	Value at Risk	—	Highway
(D)	Domant Coal Fire	—	County Road
(C)	Coal Fire	—	Local or 4WD road
(O)	Oil & Gas Wells	—	Wildfire Daily Fire Perimeter
(P)	All Pipelines	—	Bureau of Land Management
(T)	TFR (0.4859)	—	Bureau of Reclamation
		—	Private
		—	State
		—	State, County, City, Areas
		—	US Forest Service
		—	Other Federal
		—	National Park Service
		—	Retardant Avoidance Area
		—	Other Fires