

# PINE GULCH CO-GRD-000307

## Air Ops Map 8/24/20

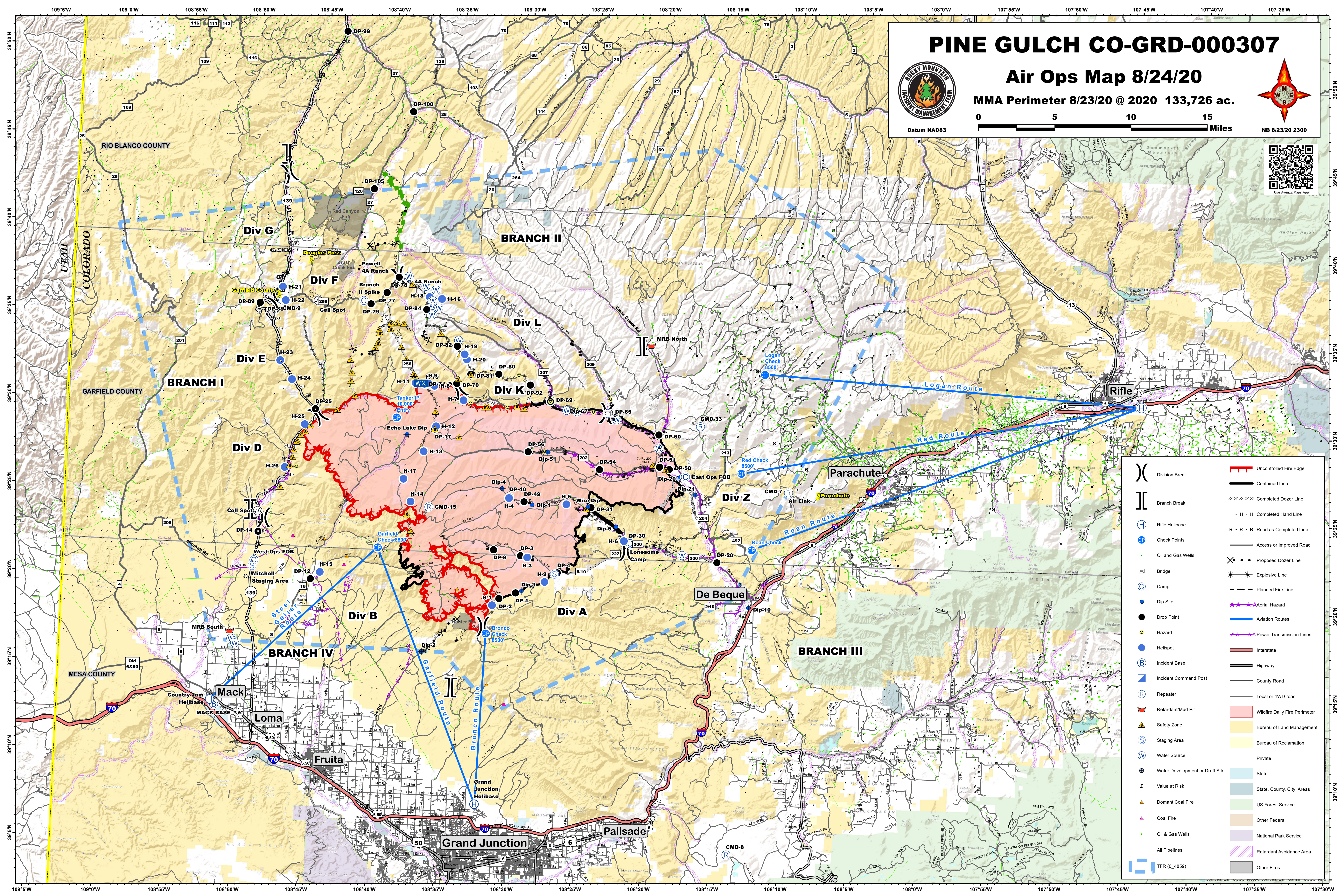
MMA Perimeter 8/23/20 @ 2020 133,726 ac.



Datum NAD83



Use Avenza Maps App



|     |                                 |           |                               |
|-----|---------------------------------|-----------|-------------------------------|
| ( ) | Division Break                  | —         | Uncontrolled Fire Edge        |
|     | Branch Break                    | —         | Contained Line                |
| (H) | Rifle Helibase                  | —         | Completed Dozer Line          |
| (C) | Check Points                    | H · H · H | Completed Hand Line           |
| (W) | Oil and Gas Wells               | R · R · R | Road as Completed Line        |
| (B) | Bridge                          | —         | Access or Improved Road       |
| (C) | Camp                            | —         | Proposed Dozer Line           |
| (D) | Dip Site                        | —         | Explosive Line                |
| (H) | Hazard                          | —         | Planned Fire Line             |
| (S) | Helispot                        | —         | Aerial Hazard                 |
| (B) | Incident Base                   | —         | Power Transmission Lines      |
| (C) | Incident Command Post           | —         | Aviation Routes               |
| (R) | Repeater                        | —         | Interstate                    |
| (M) | Retardant/Mud Pit               | —         | Highway                       |
| (S) | Safety Zone                     | —         | County Road                   |
| (S) | Staging Area                    | —         | Local or 4WD road             |
| (W) | Water Source                    | —         | Wildfire Daily Fire Perimeter |
| (D) | Water Development or Draft Site | —         | Bureau of Land Management     |
| (V) | Value at Risk                   | —         | Bureau of Reclamation         |
| (D) | Dominant Coal Fire              | —         | Private                       |
| (C) | Coal Fire                       | —         | State                         |
| (G) | Oil & Gas Wells                 | —         | State, County, City, Areas    |
| (P) | All Pipelines                   | —         | US Forest Service             |
| (T) | TFR (0.4859)                    | —         | Other Federal                 |
|     |                                 | —         | National Park Service         |
|     |                                 | —         | Retardant Avoidance Area      |
|     |                                 | —         | Other Fires                   |