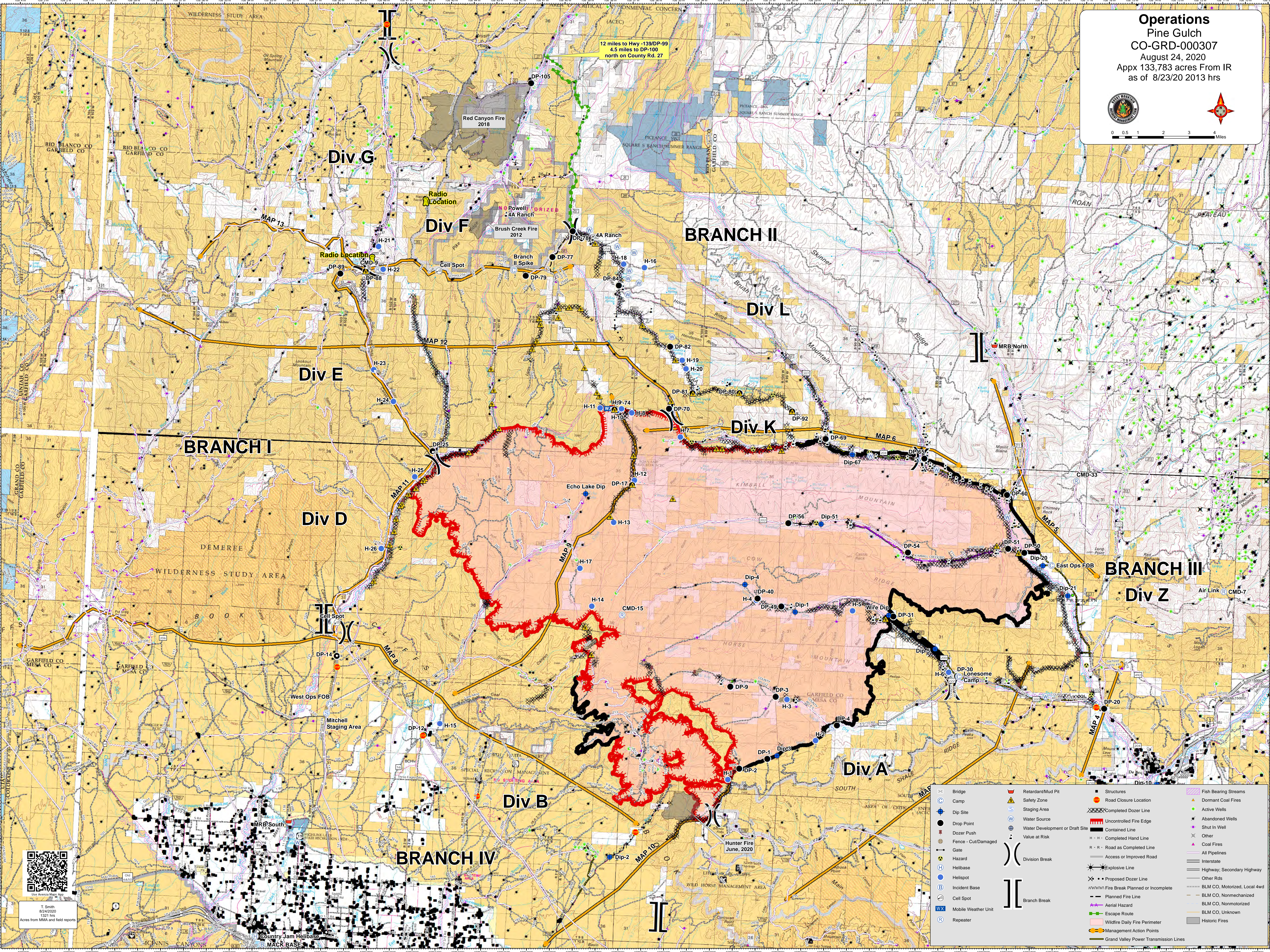


12 miles to Hwy -139/DP-99
 4.5 miles to DP-100
 north on County Rd. 27



T. Smith
 8/24/2020
 1321 hrs
 Acres from MMA and field reports

	Bridge		Retardant/Mud Pit		Structure		Fish Bearing Streams
	Camp		Safety Zone		Road Closure Location		Dormant Coal Fires
	Dip Site		Staging Area		Completed Dozer Line		Active Wells
	Drop Point		Water Source		Uncollected Fire Edge		Abandoned Wells
	Dozer Push		Water Development or Draft Site		Contained Line		Shut In Well
	Fence - Cut/Damaged		Value at Risk		Completed Hand Line		Coal Fires
	Gate		Division Break		Road as Completed Line		All Pipelines
	Hazard		Access or Improved Road		Explosive Line		Interstate
	Helibase		Branch Break		Proposed Dozer Line		Highway, Secondary Highway
	Helispot		Wildfire Daily Fire Perimeter		Planned Fire Line		Other Rds
	Incident Base		Management Action Points		Aerial Hazard		BLM CO, Motorized, Local 4wd
	Cell Spot		Grand Valley Power Transmission Lines		Escape Route		BLM CO, Nonmotorized
	Mobile Weather Unit				Historic Fires		BLM CO, Unknown
	Repeater						