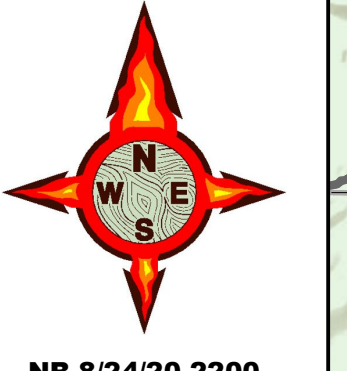


PINE GULCH CO-GRD-000307

Air Ops Map 8/25/20

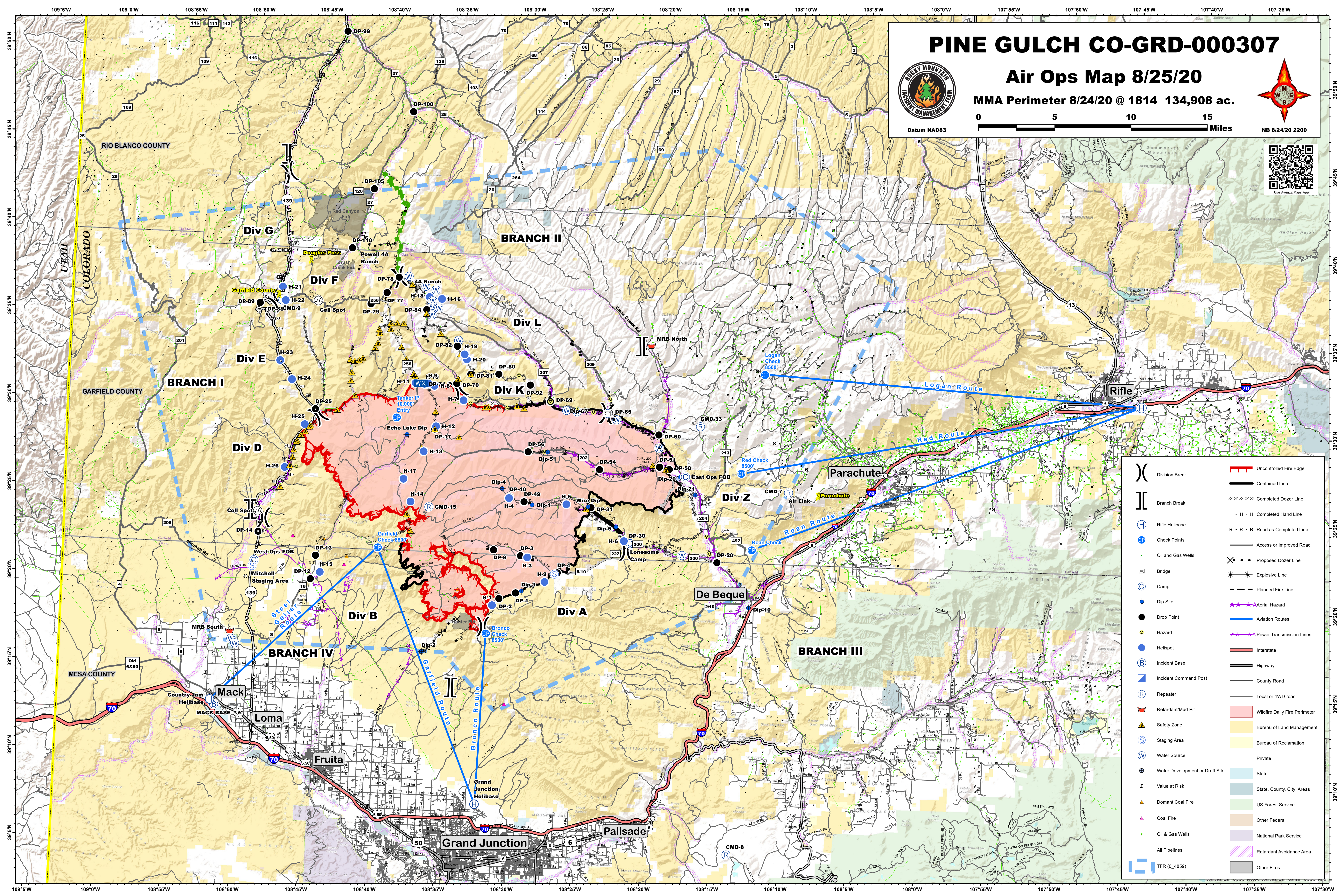
MMA Perimeter 8/24/20 @ 1814 134,908 ac.



Datum NAD83



Use Avenza Maps App



(X)	Division Break	(=)	Uncontrolled Fire Edge
(=)	Branch Break	(=)	Contained Line
(H)	Rifle Helibase	(=)	Completed Dozer Line
(C)	Check Points	(H · H · H)	Completed Hand Line
(O)	Oil and Gas Wells	(R · R · R)	Road as Completed Line
(B)	Bridge	(=)	Access or Improved Road
(C)	Camp	(X · · ·)	Proposed Dozer Line
(D)	Dip Site	(*)	Explosive Line
(H)	Hazard	(- - -)	Planned Fire Line
(B)	Helispot	(- - -)	Aerial Hazard
(B)	Incident Base	(- - -)	Power Transmission Lines
(C)	Incident Command Post	(=)	Aviation Routes
(R)	Repeater	(=)	Interstate
(M)	Retardant/Mud Pit	(=)	Highway
(S)	Safety Zone	(=)	County Road
(S)	Staging Area	(=)	Local or 4WD road
(W)	Water Source	(=)	Wildfire Daily Fire Perimeter
(W)	Water Development or Draft Site	(=)	Bureau of Land Management
(V)	Value at Risk	(=)	Bureau of Reclamation
(D)	Domant Coal Fire	(=)	Private
(C)	Coal Fire	(=)	State
(O)	Oil & Gas Wells	(=)	State, County, City, Areas
(P)	All Pipelines	(=)	US Forest Service
(T)	TFR (0.4859)	(=)	Other Federal
		(=)	National Park Service
		(=)	Retardant Avoidance Area
		(=)	Other Fires