

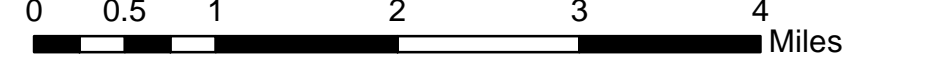
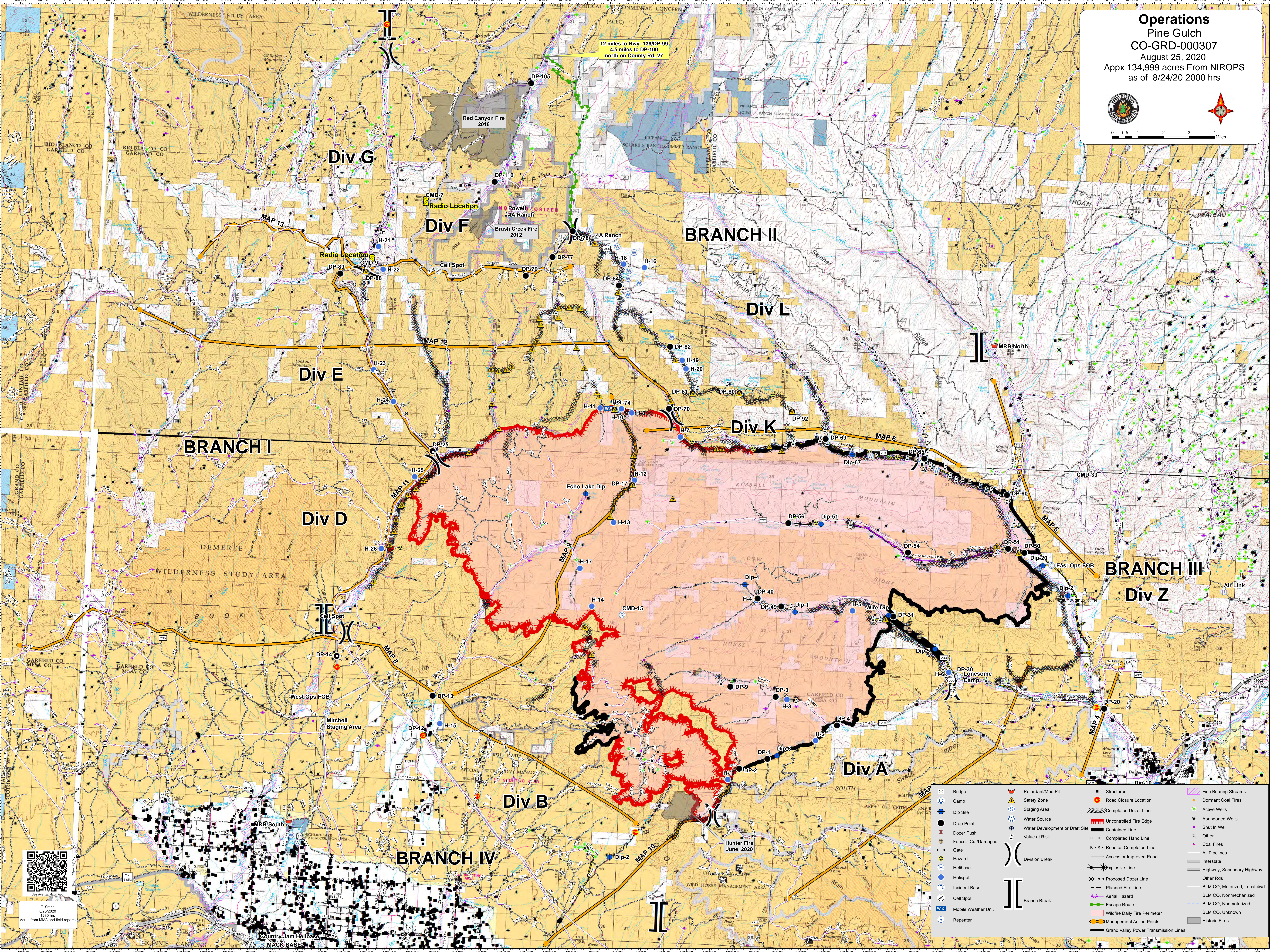


Operations
Pine Gulch
CO-GRD-000307
 August 25, 2020
 Appx 134,999 acres From NIOPS
 as of 8/24/20 2000 hrs

Bridge	Retardant/Mud Pit	Structures	Fish Bearing Streams
Camp	Safety Zone	Staging Area	Dormant Coal Fires
Dip Site	Staging Area	Water Source	Active Wells
Drop Point	Water Source	Water Development or Draft Site	Abandoned Wells
Dozer Push	Value at Risk	Completed Dozer Line	Shut In Well
Fence - Cut/Damaged	Division Break	Completed Fire Edge	Other
Gate	Branch Break	Contained Line	Coal Fires
Hazard		Completed Hand Line	All Pipelines
Helibase		R - R - Road as Completed Line	Access or Improved Road
Helispot		Access or Improved Road	Interstate
Mobile Base		Explosive Line	Highway, Secondary Highway
Cell Spot		Proposed Dozer Line	Other Rds
Mobile Weather Unit		Planned Fire Line	BLM CO, Motorized, Local 4wd
Repeater		Aerial Fire Line	BLM CO, Nonmotorized
		Escape Route	BLM CO, Nonmotorized
		Wildfire Daily Fire Perimeter	BLM CO, Unknown
		Management Action Points	Historic Fires
		Grand Valley Power Transmission Lines	

QR Code
 T. Smith
 8/25/2020
 1230 hrs
 Acres from MMA and field reports