

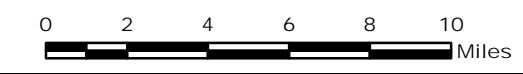
# PINE GULCH CO-GRD-000307

## Pilot Map 8/25/20

MMA Perimeter 8/24/20 @ 1814 134,908 ac.



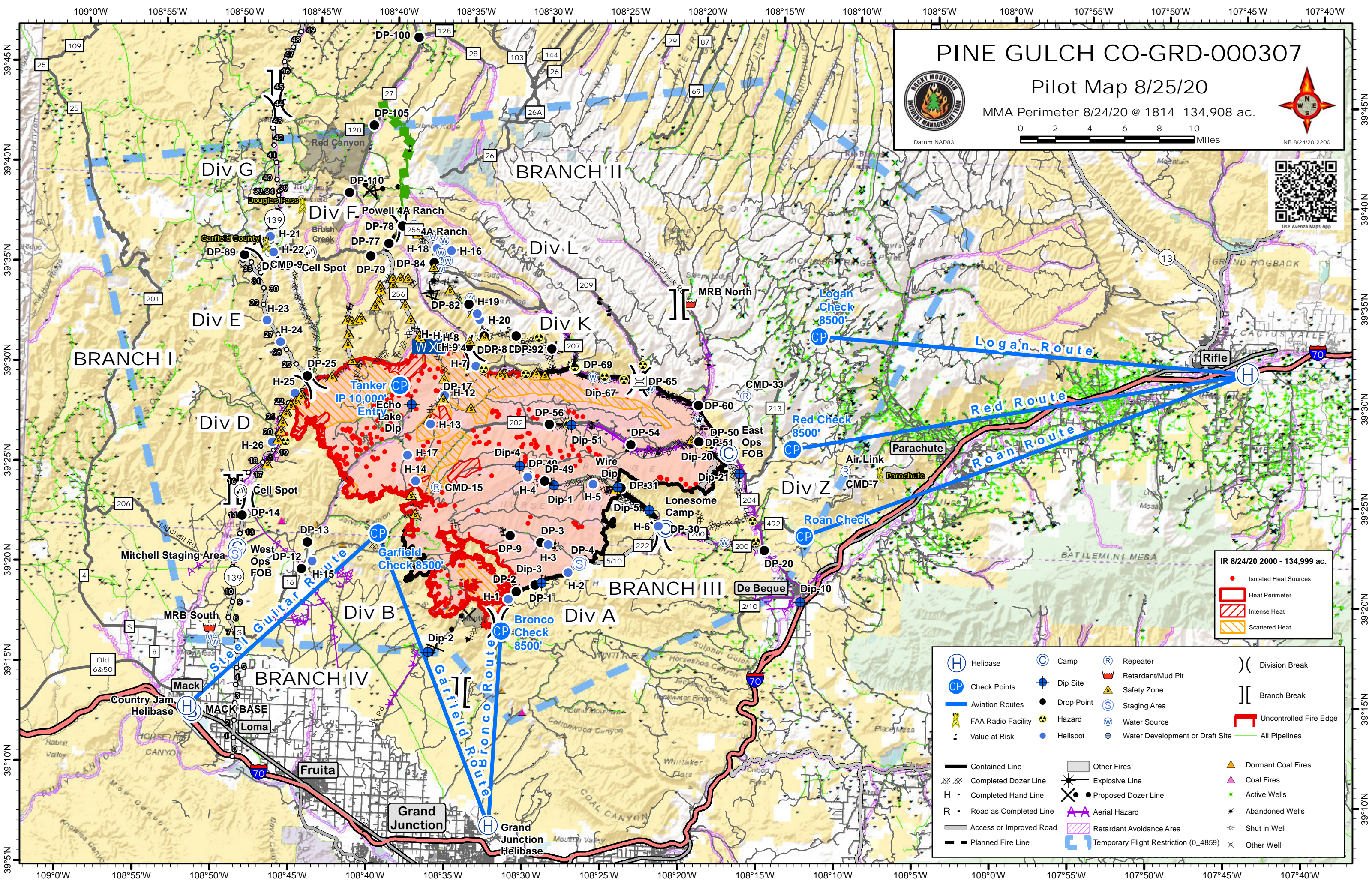
Datum NAD83



NB 8/24/20 2200



Use Avenza Maps App



**IR 8/24/20 2000 - 134,999 ac.**

- Isolated Heat Sources
- Heat Perimeter
- ▨ Intense Heat
- ▨ Scattered Heat

Helibase	Camp	Repeater	Division Break
Check Points	Dip Site	Retardant/Mud Pit	Branch Break
Aviation Routes	Drop Point	Staging Area	Uncontrolled Fire Edge
FAA Radio Facility	Hazard	Water Source	All Pipelines
Value at Risk	Helispot	Water Development or Draft Site	Dormant Coal Fires
Contained Line	Other Fires	Explosive Line	Coal Fires
Completed Dozer Line	Proposed Dozer Line	Aerial Hazard	Active Wells
Completed Hand Line	Retardant Avoidance Area	Shut in Well	Abandoned Wells
Road as Completed Line	Temporary Flight Restriction (0_4859)	Other Well	
Access or Improved Road			
Planned Fire Line			