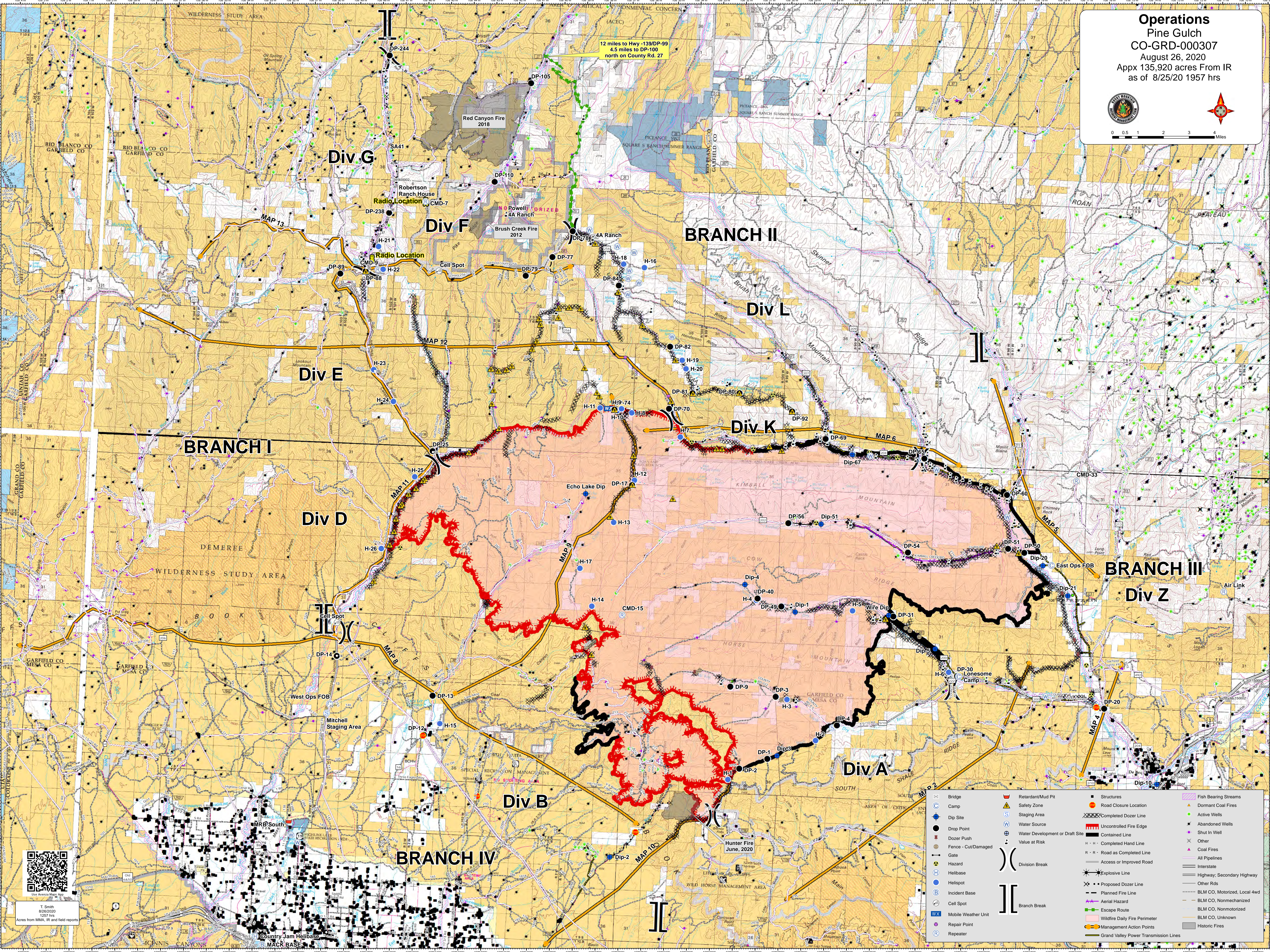


12 miles to Hwy -139/DP-99
 4.5 miles to DP-100
 north on County Rd. 27



T. Smith
 8/26/2020
 1257 hrs
 Acres from MMA, IR and field reports

	Bridge		Retardant/Mud Pit		Structures		Fish Bearing Streams
	Camp		Safety Zone		Road Closure Location		Dormant Coal Fires
	Dip Site		Staging Area		Completed Dozer Line		Active Wells
	Drop Point		Water Source		Uncontrolled Fire Edge		Abandoned Wells
	Dozer Push		Water Development or Draft Site		Contained Line		Shut In Well
	Fence - Cut/Damaged		Value at Risk		Completed Hand Line		Other
	Gate		Road as Completed Line		Access or Improved Road		Coal Fires
	Hazard		Explosive Line		Highway, Secondary Highway		All Pipelines
	Helibase		Proposed Dozer Line		Other Rds		BLM CO, Motorized, Local 4wd
	Helispot		Planned Fire Line		BLM CO, Nonmechanized		BLM CO, Unknown
	Incident Base		Aerial Hazard		Wildfire Daily Fire Perimeter		Historic Fires
	Cell Spot		Escape Route		Management Action Points		
	Mobile Weather Unit		Repair Point		Grand Valley Power Transmission Lines		
	Repeater						