

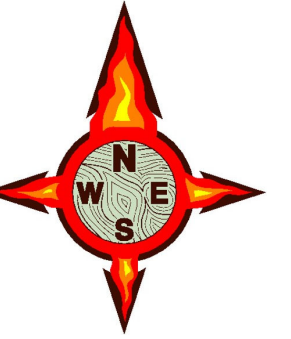
PINE GULCH CO-GRD-000307

Air Ops Map 8/27/20

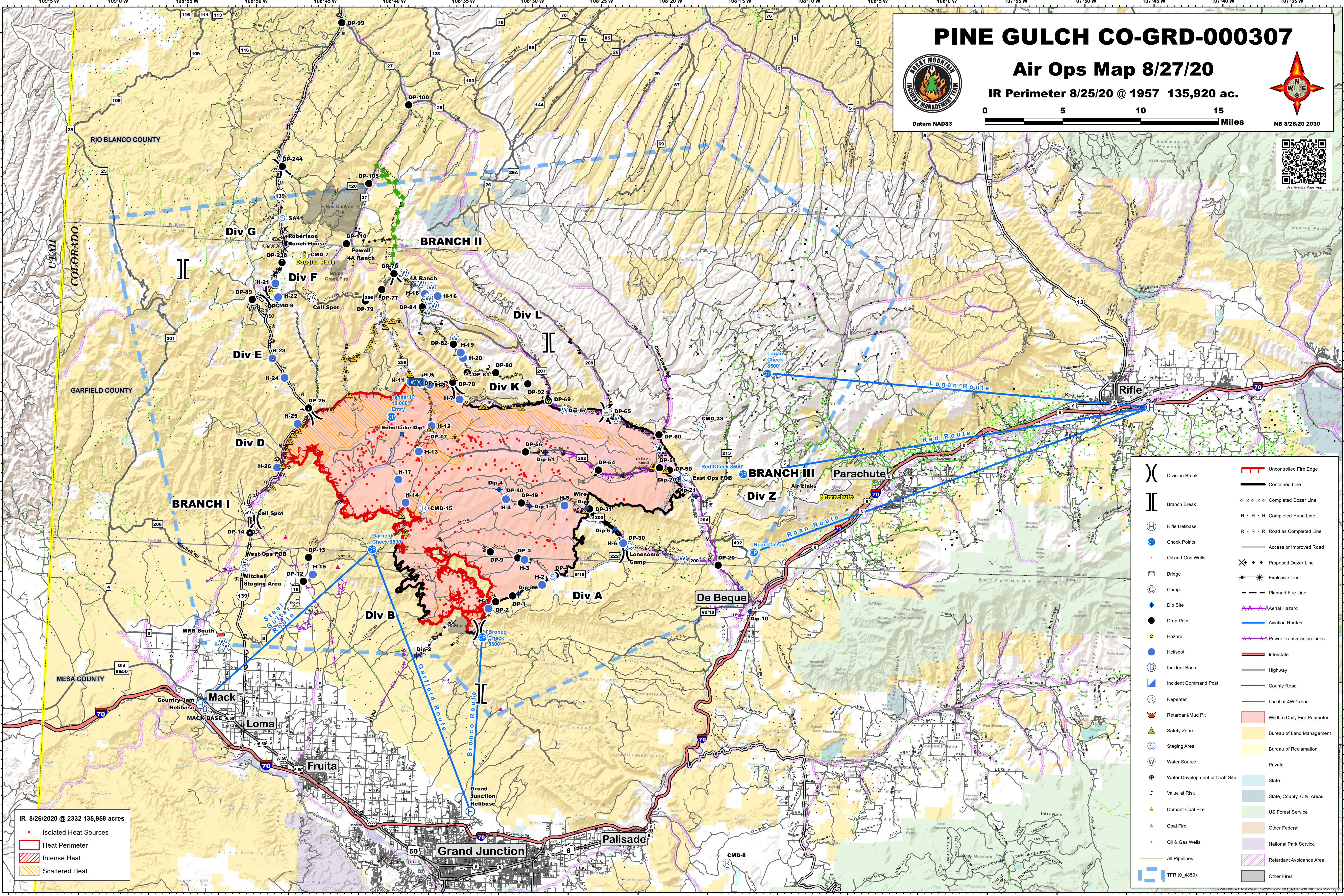
IR Perimeter 8/25/20 @ 1957 135,920 ac.



Datum NAD83



NB 8/26/20 2030



IR 8/26/2020 @ 2332 135,958 acres

- Isolated Heat Sources
- Heat Perimeter
- Intense Heat
- Scattered Heat

()	Division Break	—	Uncontrolled Fire Edge
[]	Branch Break	—	Contained Line
(H)	Rifle Helibase	—	Completed Dozer Line
(C)	Check Points	H · H · H	Completed Hand Line
(S)	Oil and Gas Wells	R · R · R	Road as Completed Line
(B)	Bridge	—	Access or Improved Road
(C)	Camp	—	Proposed Dozer Line
(D)	Dip Site	—	Explosive Line
(H)	Hazard	—	Planned Fire Line
(S)	Helispot	—	Aerial Hazard
(B)	Incident Base	—	Power Transmission Lines
(C)	Incident Command Post	—	Interstate
(R)	Repeater	—	Highway
(M)	Retardant/Mud Pit	—	County Road
(S)	Safety Zone	—	Local or 4WD road
(S)	Staging Area	—	Wildfire Daily Fire Perimeter
(W)	Water Source	—	Bureau of Land Management
(D)	Water Development or Draft Site	—	Bureau of Reclamation
(V)	Value at Risk	—	Private
(C)	Dominant Coal Fire	—	State
(C)	Coal Fire	—	State, County, City, Areas
(G)	Oil & Gas Wells	—	US Forest Service
(P)	All Pipelines	—	Other Federal
(T)	TFR (0.4859)	—	National Park Service
		—	Retardant Avoidance Area
		—	Other Fires